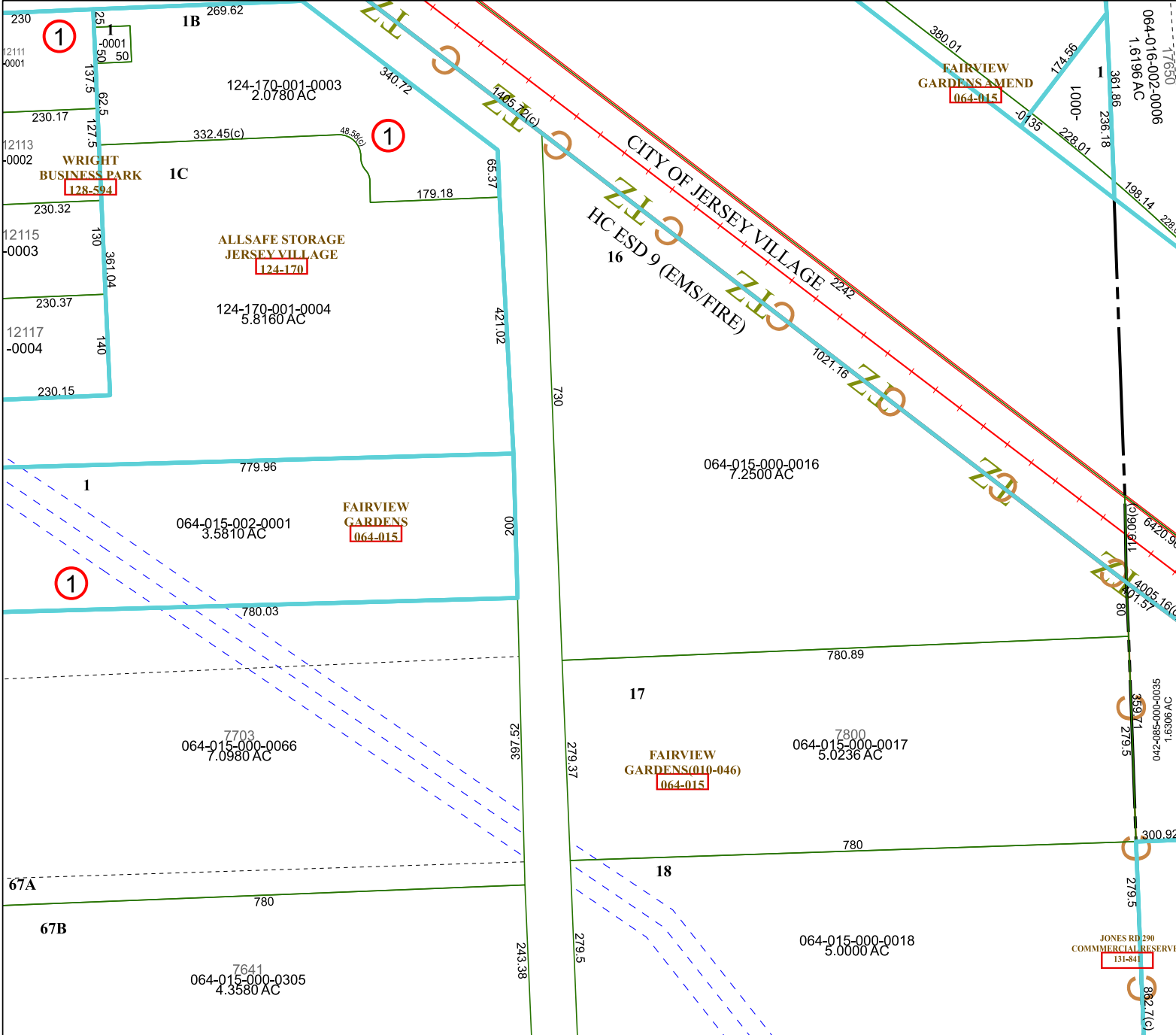


4863D9



Harris Central Appraisal District



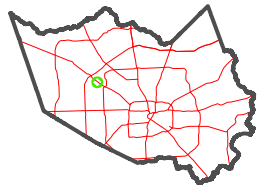
0 45 90 180 Feet

PUBLICATION DATE: 1/5/2023

Geospatial or map data maintained by the Harris Central Appraisal District is for informational purposes and may not have been prepared for or be suitable for legal, engineering, or surveying purposes. It does not represent an on-the-ground survey and only represents the approximate location of property boundaries.



MAP LOCATION



FACET 4862B1

11	12	9	10	11
3	4	1	2	3
7	8	5	6	7

4862B5

4862A4

4862B2

67A

67B

JONES RD 290
COMMERCIAL RESERVES
131-841