

4862B8

Harris Central Appraisal District

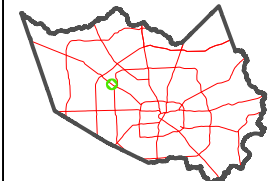


0 45 90 180 Feet

PUBLICATION DATE: 1/5/2023

Geospatial or map data maintained by the Harris Central Appraisal District is for informational purposes and may not have been prepared for or be suitable for legal, engineering, or surveying purposes. It does not represent an on-the-ground survey and only represents the approximate location of property boundaries.

MAP LOCATION



FACET 4862B12

6	7	8	5	6
10	11	12	9	10
2	3	4	1	2

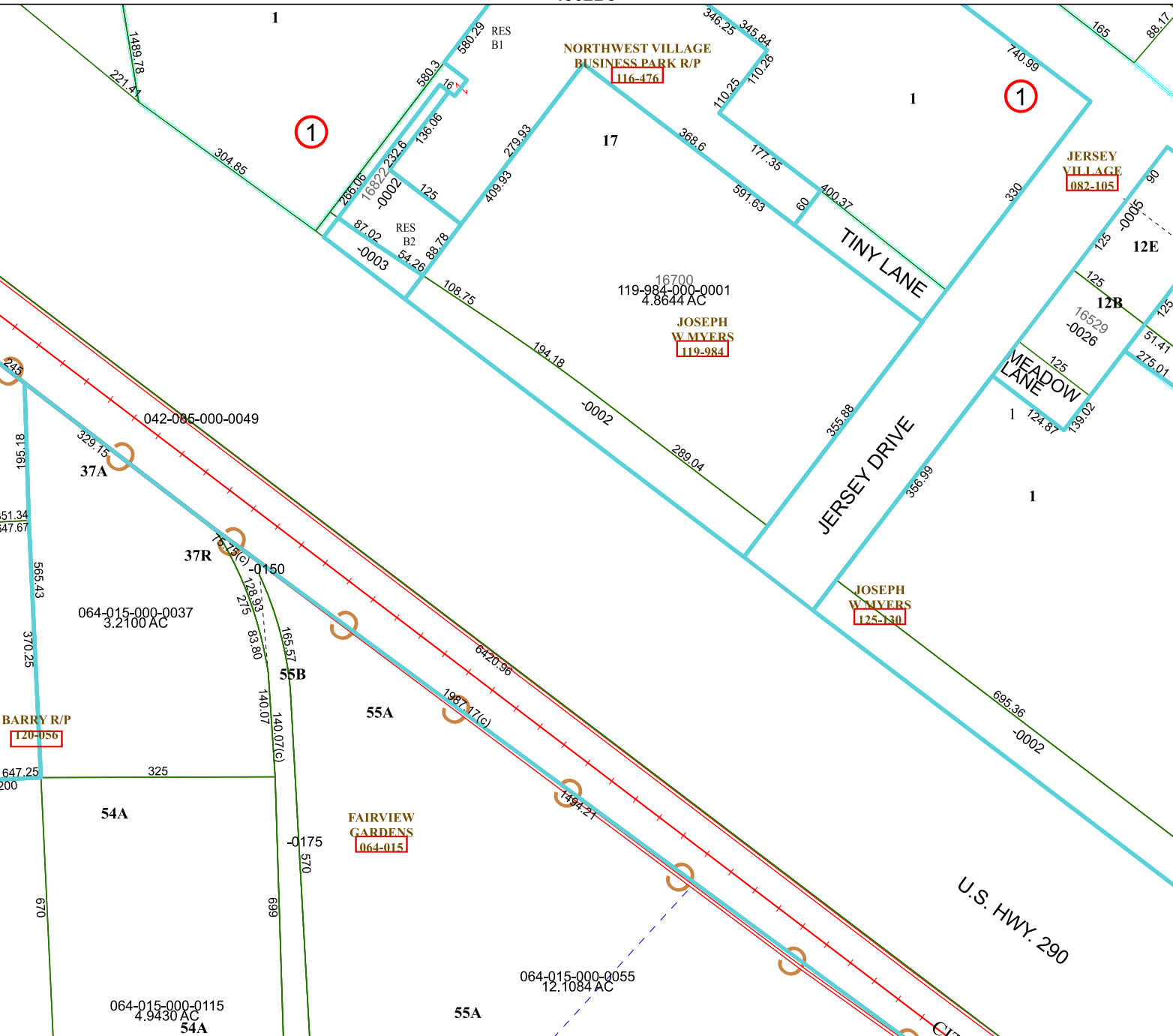
4862D4

NORTHWEST VILLAGE BUSINESS PARK R/P
116-476

JOSEPH W MYERS
119-984

JOSEPH W MYERS
125-180

JERSEY VILLAGE
082-105



4862B11

4962A9