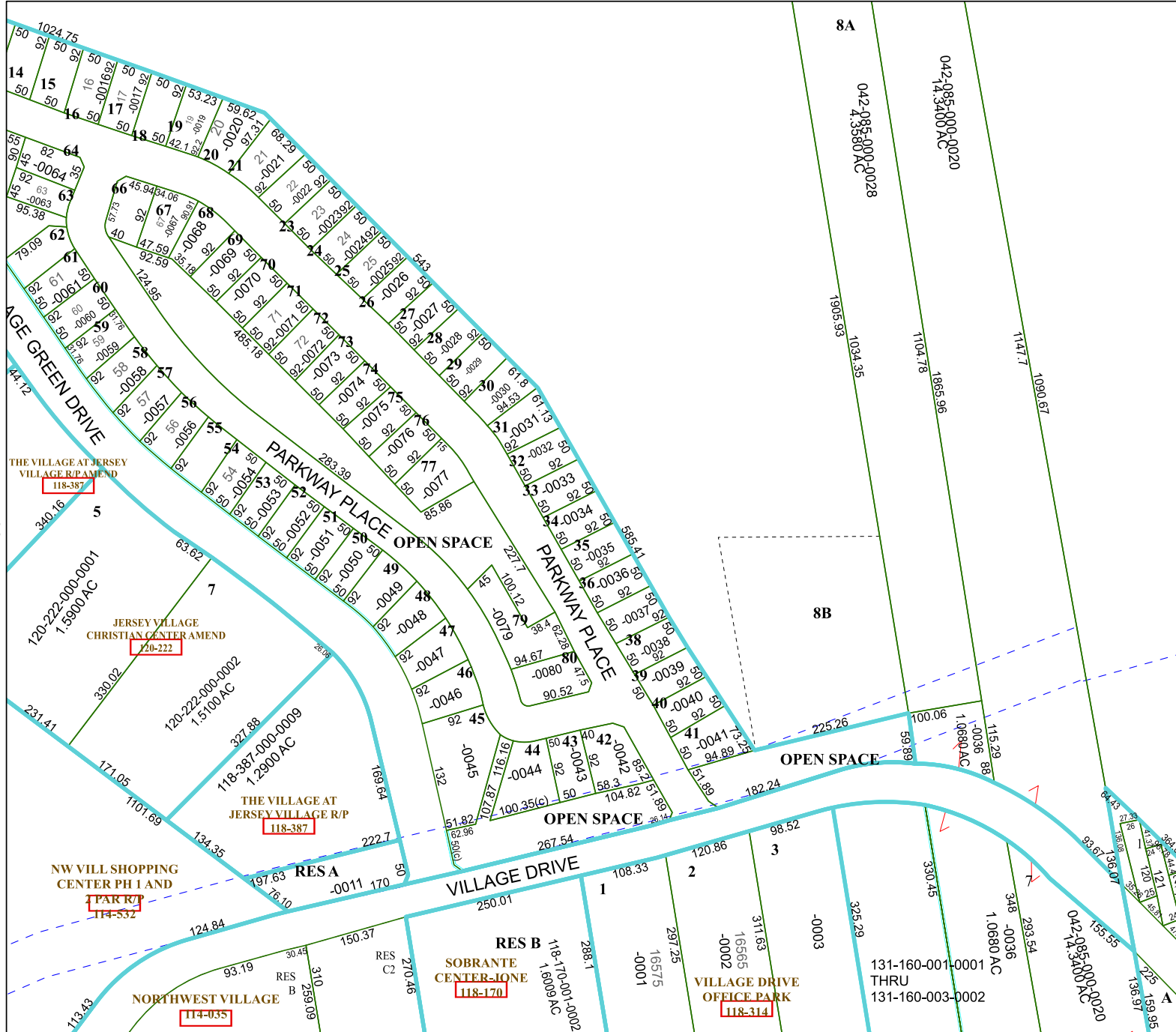


4863D11



4862B7

Harris Central Appraisal District



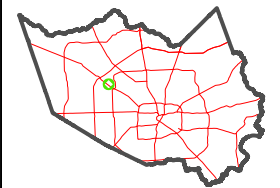
0 45 90 180 Feet

PUBLICATION DATE:
5/6/2024

Geospatial or map data maintained by the Harris Central Appraisal District is for informational purposes and may not have been prepared for or be suitable for legal, engineering, or surveying purposes. It does not represent an on-the-ground survey and only represents the approximate location of property boundaries.



MAP LOCATION



FACET 4862B3

9	10	11	12	9
1	2	3	4	1
5	6	7	8	5

4862B2

4862B4

8A

8B

