

Harris Central Appraisal District

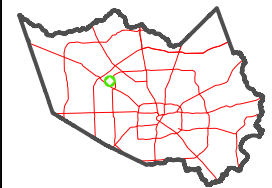


0 45 90 180 Feet

PUBLICATION DATE: 1/5/2023

Geospatial or map data maintained by the Harris Central Appraisal District is for informational purposes and may not have been prepared for or be suitable for legal, engineering, or surveying purposes. It does not represent an on-the-ground survey and only represents the approximate location of property boundaries.

MAP LOCATION



FACET 4863D4

10	11	12	9	10
2	3	4	1	2
6	7	8	5	6

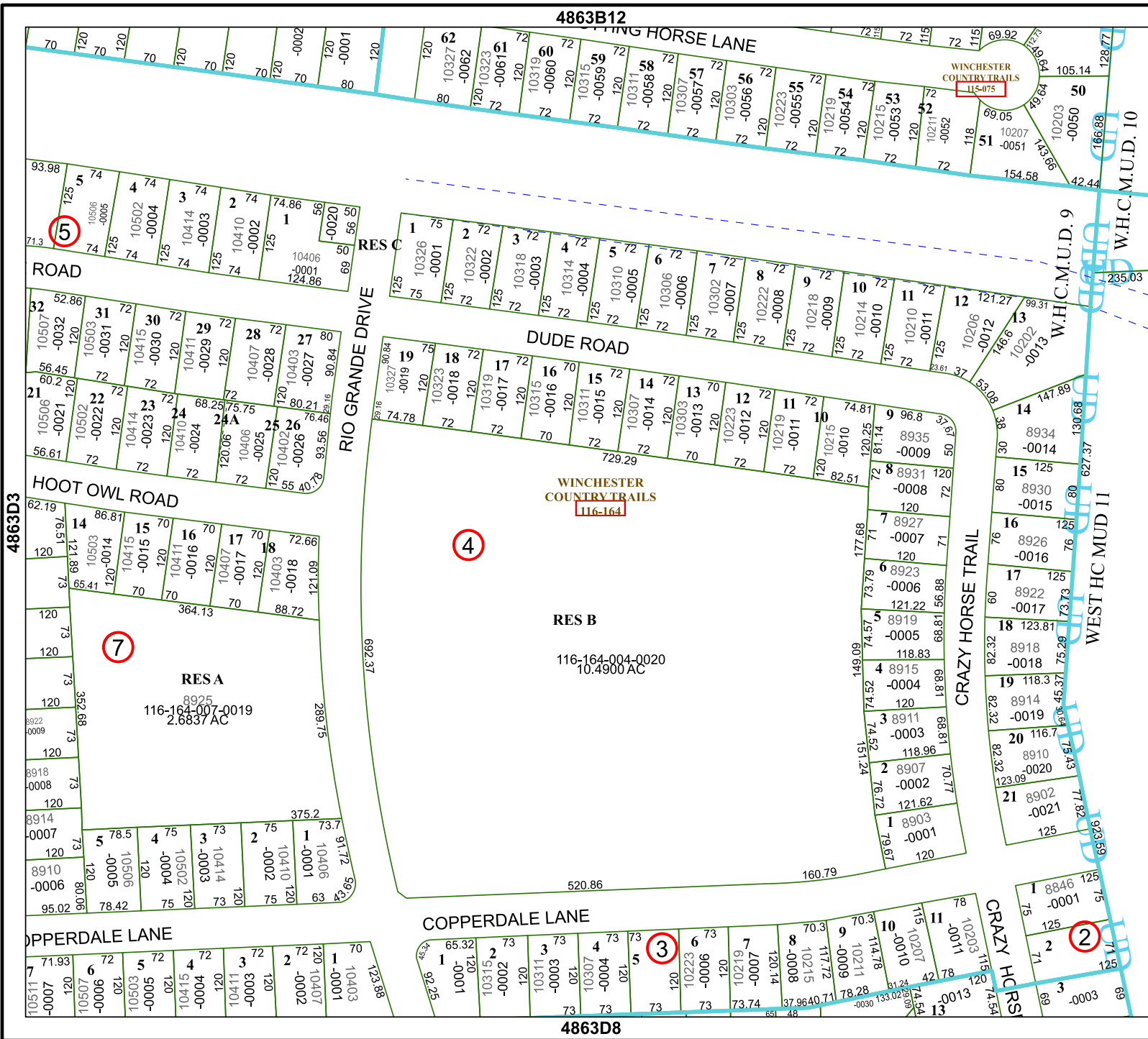
4863B12

WINCHESTER COUNTRY TRAILS
116-164

RES B

116-164-004-0020
10.4900 AC

4863D8



4963C1

