

4865D10

Harris Central Appraisal District



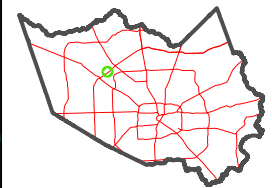
0 45 90 180 Feet

PUBLICATION DATE: 1/5/2023

Geospatial or map data maintained by the Harris Central Appraisal District is for informational purposes and may not have been prepared for or be suitable for legal, engineering, or surveying purposes. It does not represent an on-the-ground survey and only represents the approximate location of property boundaries.



MAP LOCATION



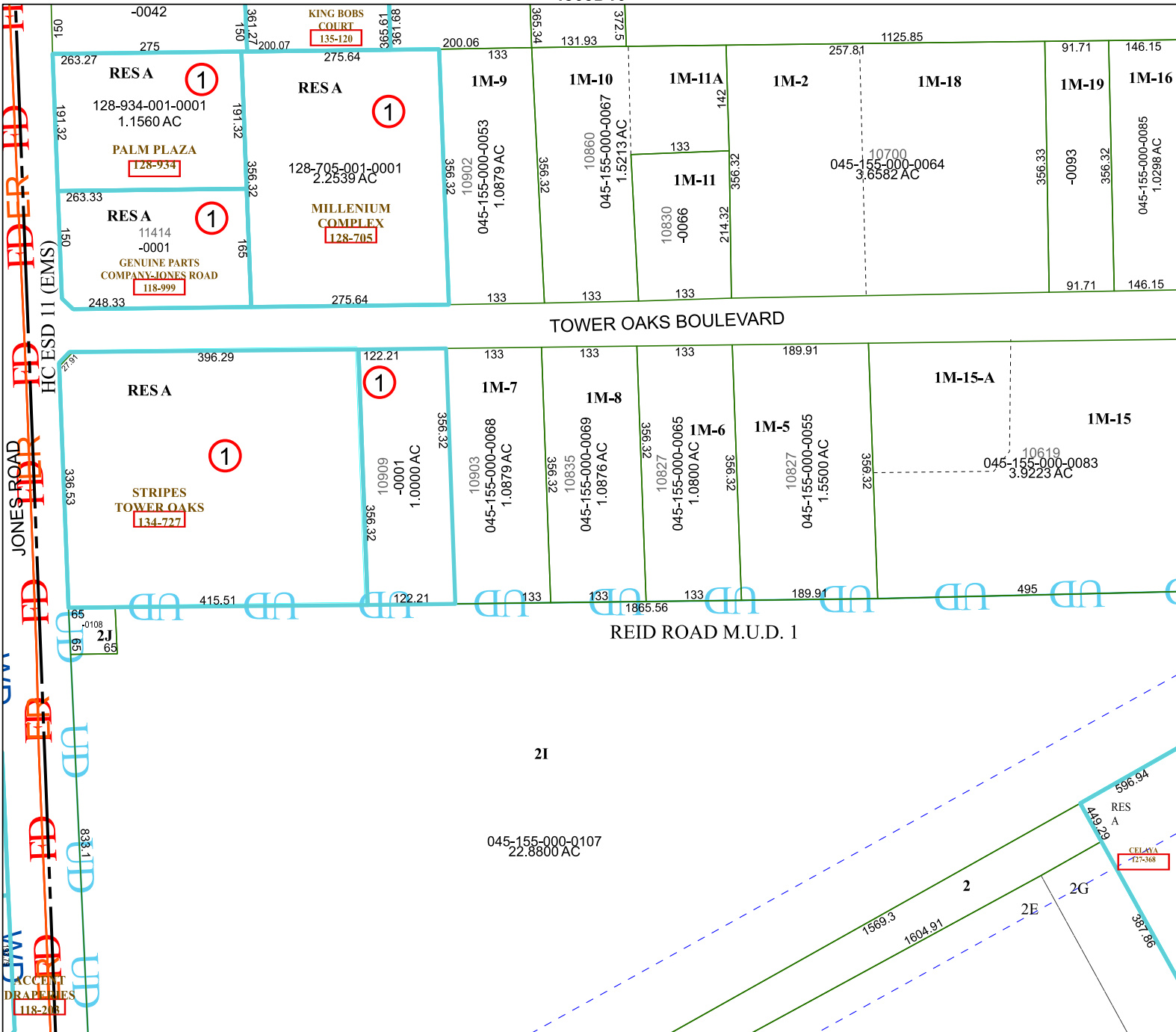
FACET 4864B2

12	9	10	11	12
4	1	2	3	4
8	5	6	7	8

4864B6

4864B3

4864B1



ACCENT DRAPERIES 118-208