

4864B1

4864B5

Harris Central Appraisal District

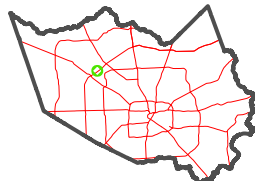


0 45 90 180 Feet

PUBLICATION DATE: 3/11/2024

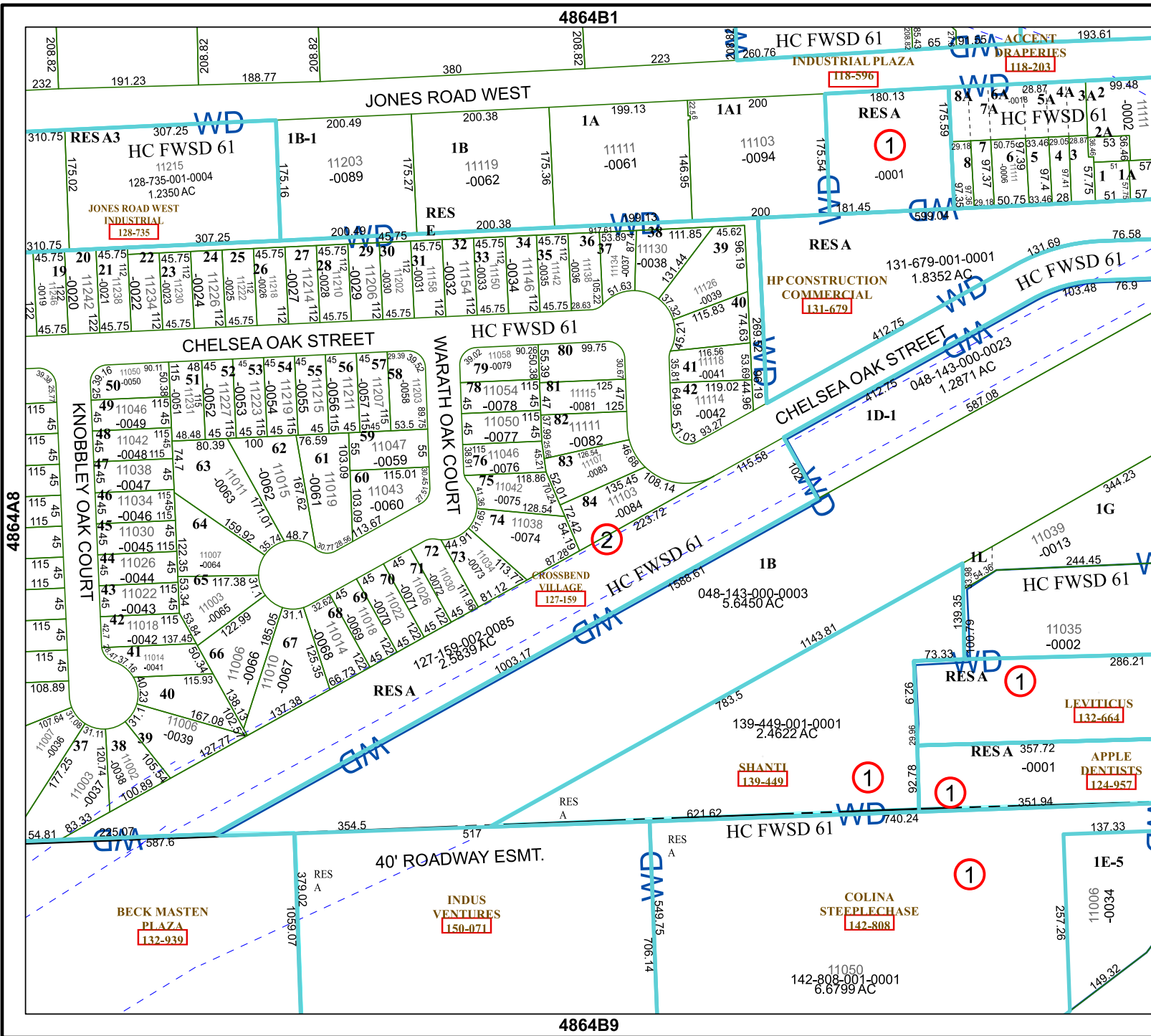
Geospatial or map data maintained by the Harris Central Appraisal District is for informational purposes and may not have been prepared for or be suitable for legal, engineering, or surveying purposes. It does not represent an on-the-ground survey and only represents the approximate location of property boundaries.

MAP LOCATION



FACET 4864B5

3	4	1	2	3
7	8	5	6	7
11	12	9	10	11



4864A8

4864B6