

Harris Central Appraisal District

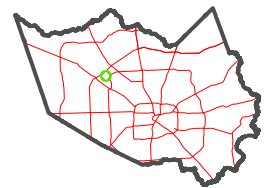


0 45 90 180 Feet

PUBLICATION DATE: 1/5/2023

Geospatial or map data maintained by the Harris Central Appraisal District is for informational purposes and may not have been prepared for or be suitable for legal, engineering, or surveying purposes. It does not represent an on-the-ground survey and only represents the approximate location of property boundaries.

MAP LOCATION



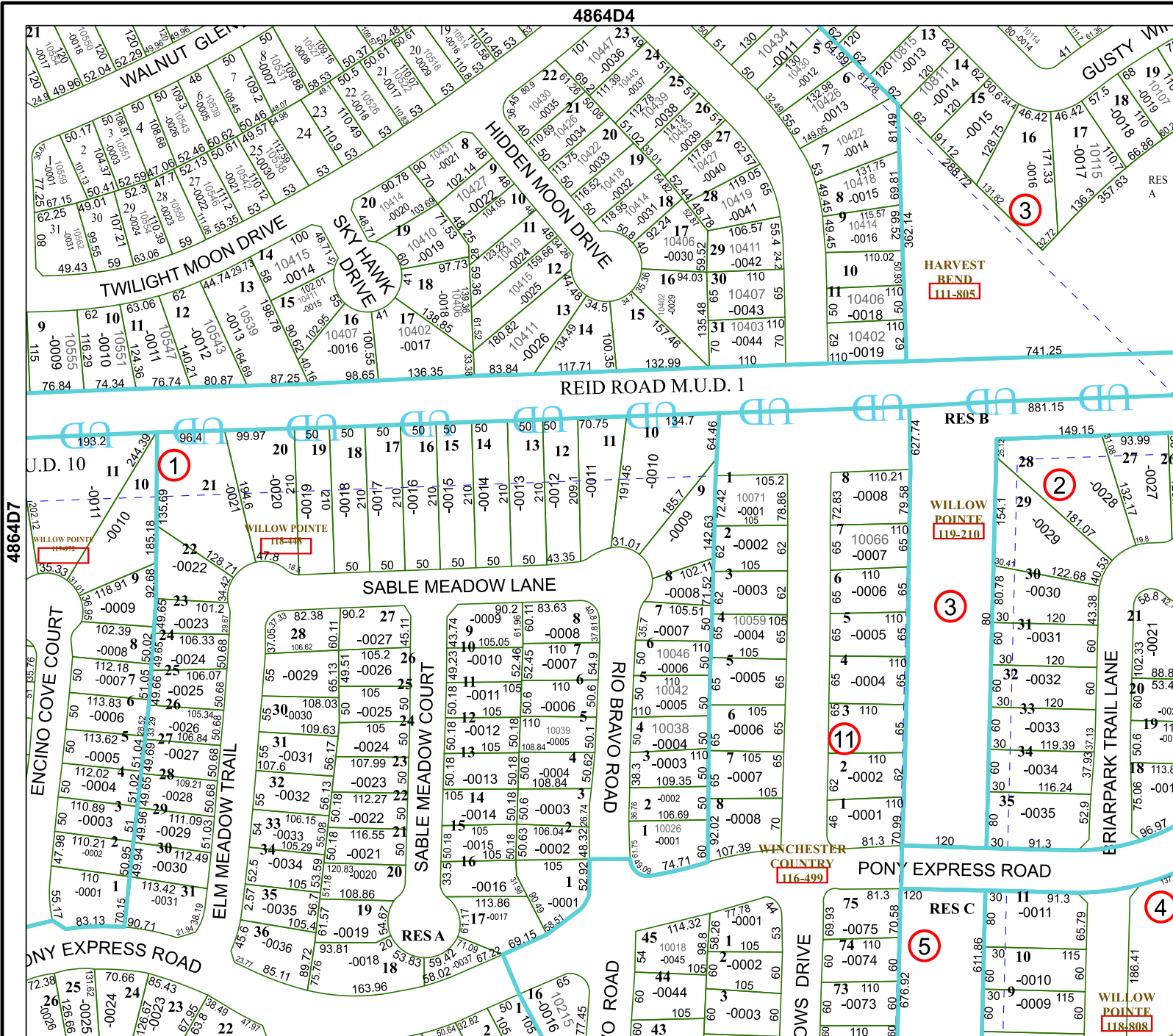
FACET 4864D8

2	3	4	1	2
6	7	8	5	6
10	11	12	9	10

4864D4

REID ROAD M.U.D. 1

4864D12



4864D7

4864C5

WINCHESTER COUNTRY 116-499

HARVEST BEND 111-805

WILLOW POINTE 119-210

WILLOW POINTE 118-808