

# Harris Central Appraisal District

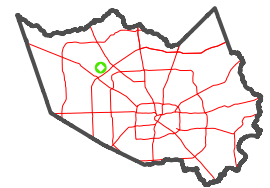


0 45 90 180 Feet

PUBLICATION DATE: 1/5/2023

Geospatial or map data maintained by the Harris Central Appraisal District is for informational purposes and may not have been prepared for or be suitable for legal, engineering, or surveying purposes. It does not represent an on-the-ground survey and only represents the approximate location of property boundaries.

MAP LOCATION

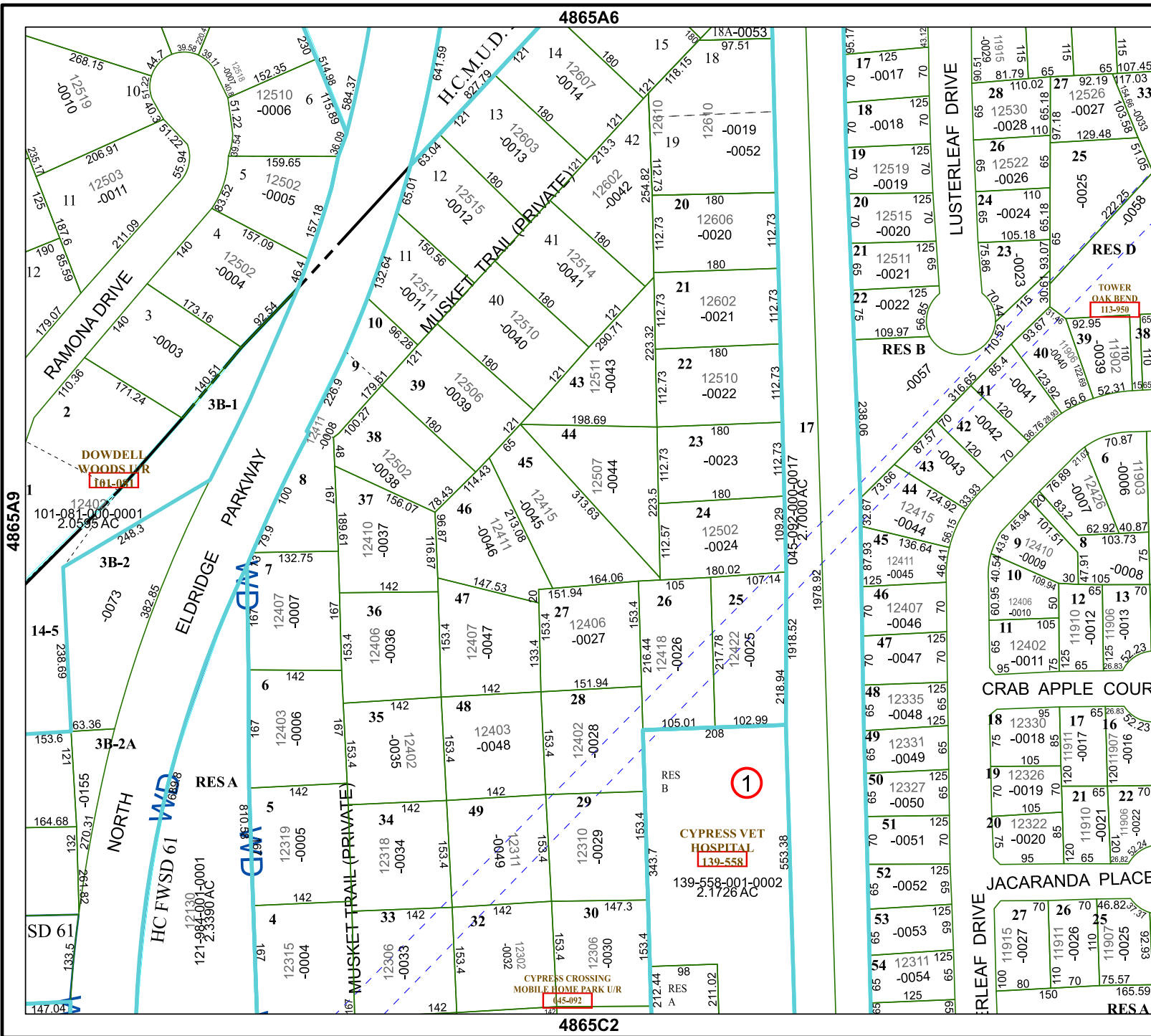


## FACET 4865A10

8	5	6	7	8
12	9	10	11	12
4	1	2	3	4

4865A6

4865C2



4865A9

4865A11

1

CYPRESS VET HOSPITAL  
139-558-001-0002  
2.1726 AC

DOWDELL WOODS L/R  
161-041

TOWER OAK BEND  
113-950

CYPRESS CROSSING MOBILE HOME PARK U/R  
445-092