

# Harris Central Appraisal District

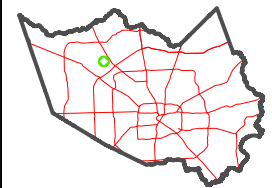


0 45 90 180 Feet

PUBLICATION DATE: 1/5/2023

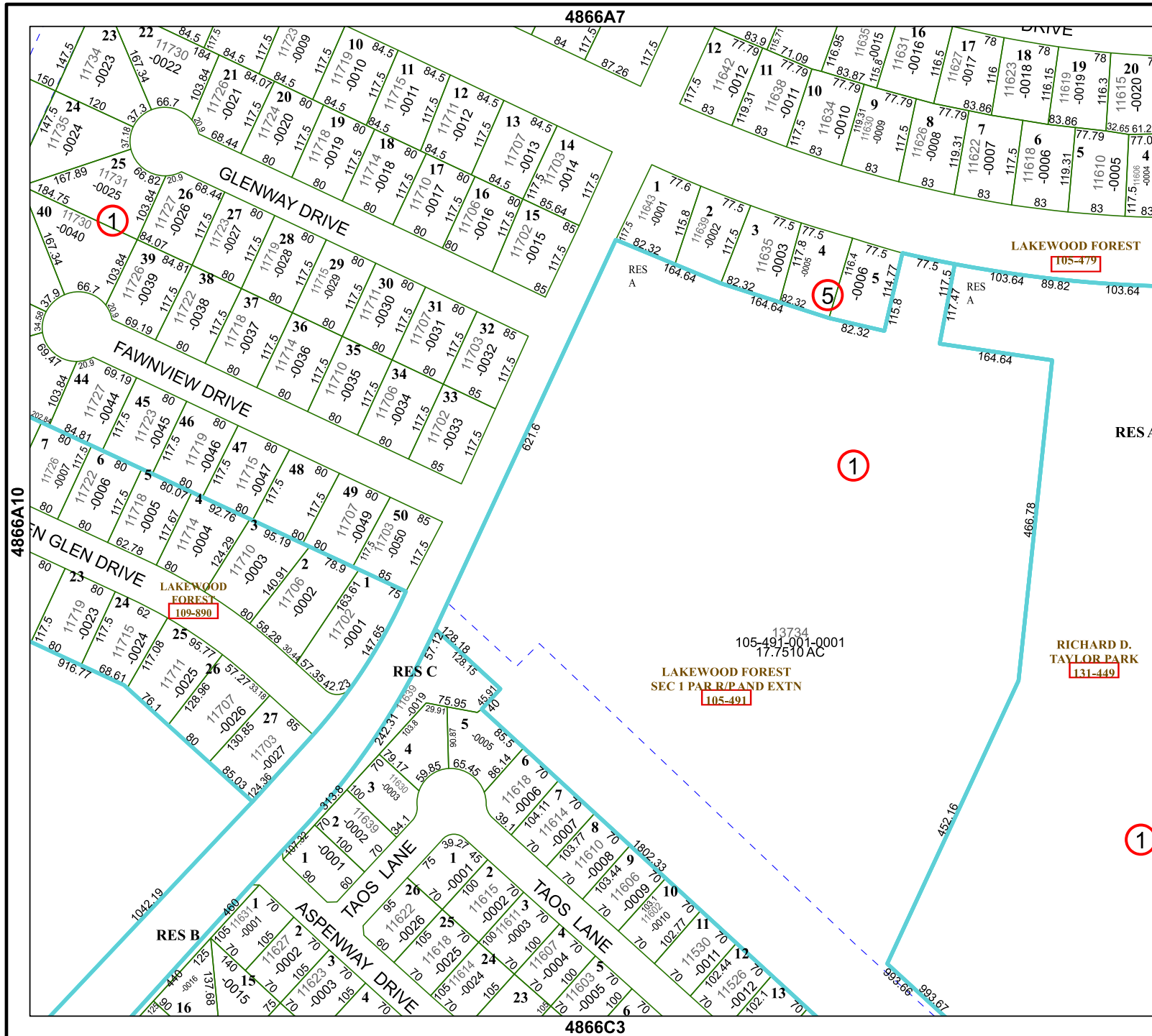
Geospatial or map data maintained by the Harris Central Appraisal District is for informational purposes and may not have been prepared for or be suitable for legal, engineering, or surveying purposes. It does not represent an on-the-ground survey and only represents the approximate location of property boundaries.

## MAP LOCATION



# FACET 4866A11

|   |    |    |    |   |
|---|----|----|----|---|
| 5 | 6  | 7  | 8  | 5 |
| 9 | 10 | 11 | 12 | 9 |
| 1 | 2  | 3  | 4  | 1 |



4866A7

4866C3

4866A10

4866A12

RES A

RES C

RES B

1

