

# Harris Central Appraisal District

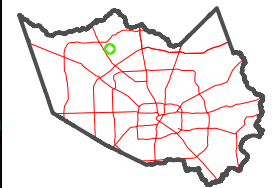


0 45 90 180 Feet

PUBLICATION DATE:  
1/5/2023

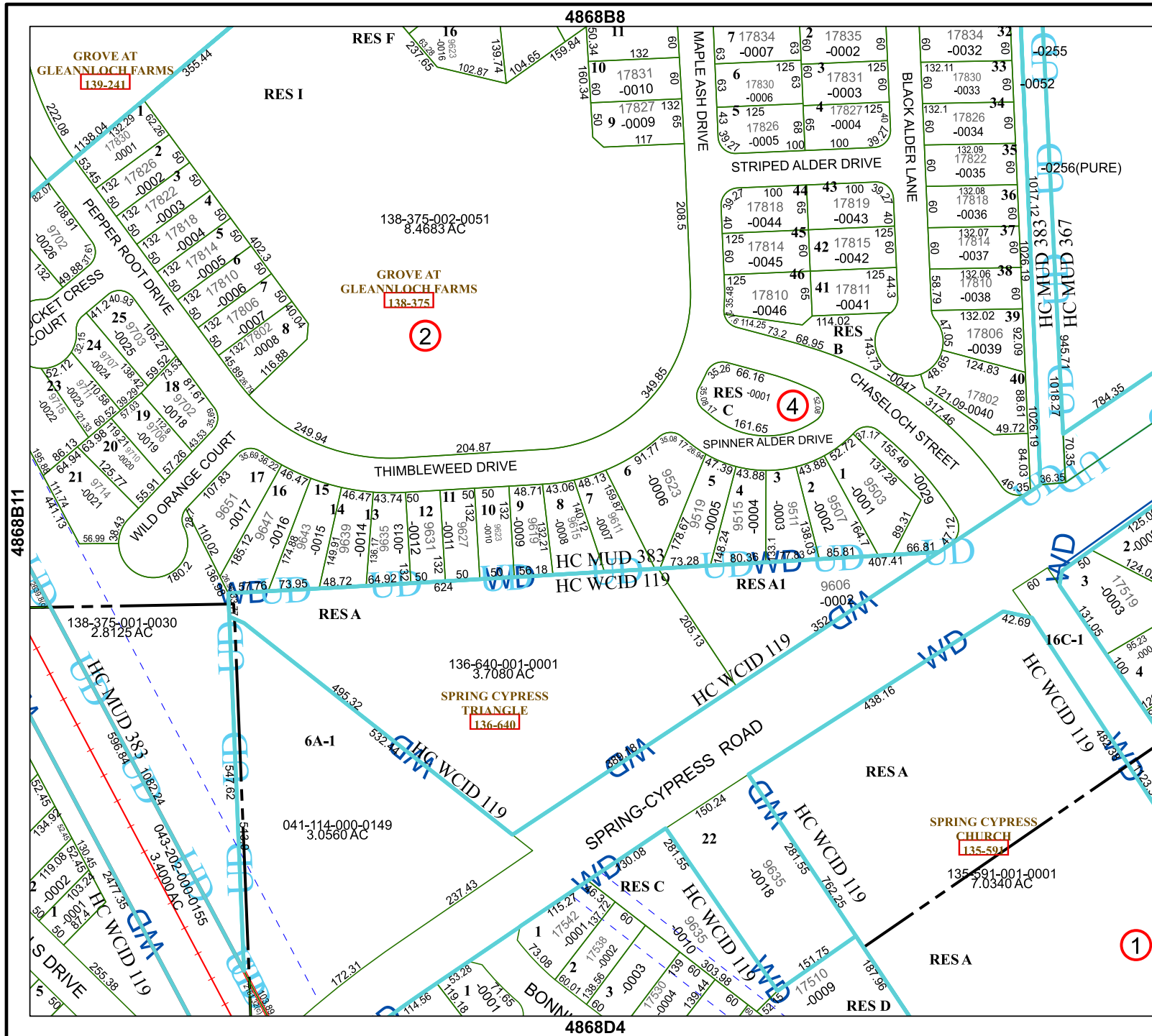
Geospatial or map data maintained by the Harris Central Appraisal District is for informational purposes and may not have been prepared for or be suitable for legal, engineering, or surveying purposes. It does not represent an on-the-ground survey and only represents the approximate location of property boundaries.

MAP LOCATION



## FACET 4868B12

6	7	8	5	6
10	11	12	9	10
2	3	4	1	2



4868B8

4868D4

1