

4868B5

# Harris Central Appraisal District

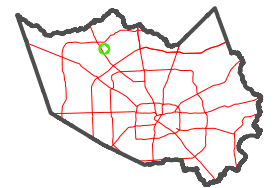


0 45 90 180 Feet

PUBLICATION DATE: 2/13/2024

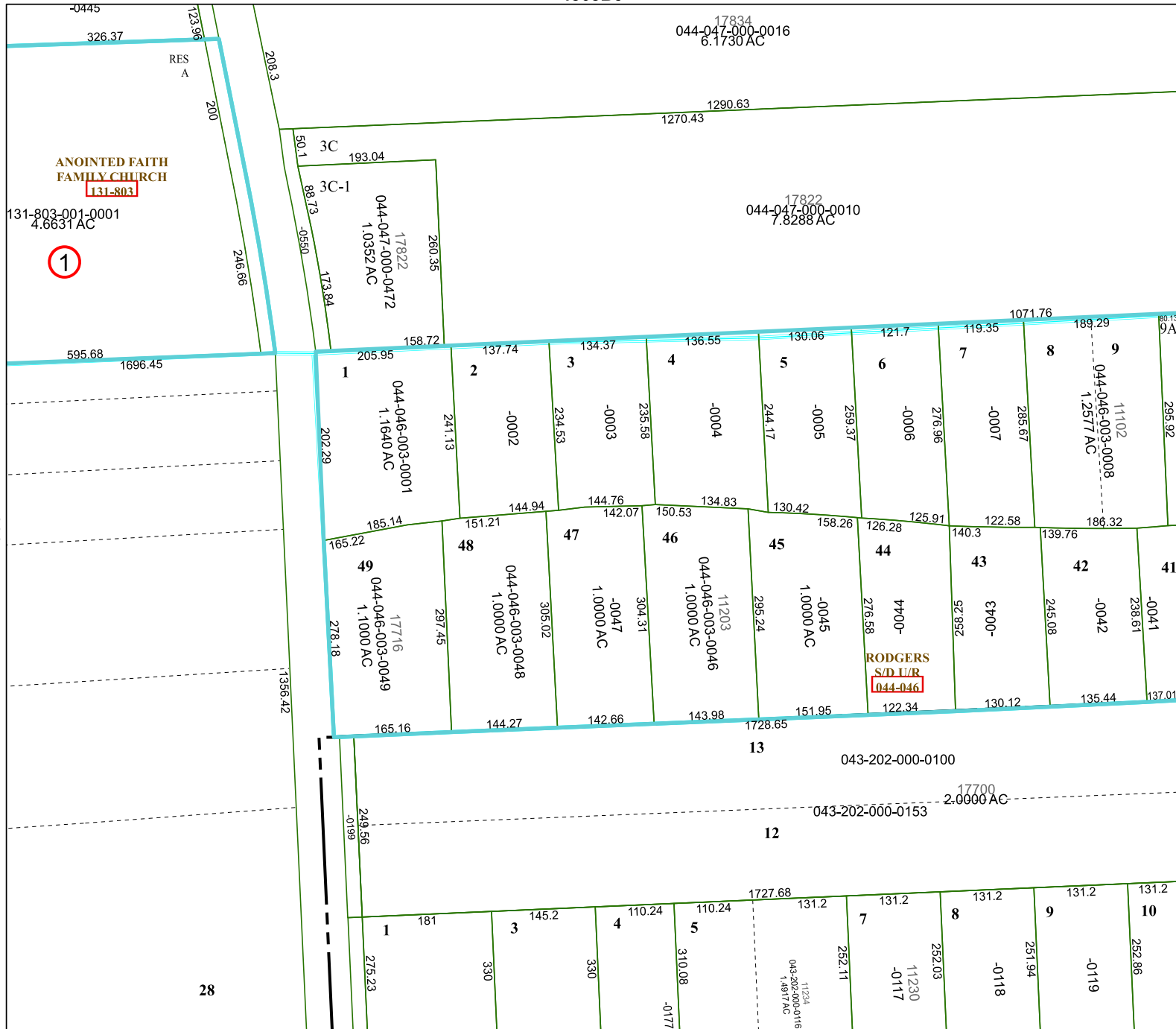
Geospatial or map data maintained by the Harris Central Appraisal District is for informational purposes and may not have been prepared for or be suitable for legal, engineering, or surveying purposes. It does not represent an on-the-ground survey and only represents the approximate location of property boundaries.

MAP LOCATION



## FACET 4868B9

7	8	5	6	7
11	12	9	10	11
3	4	1	2	3



4868D1

4868A12

4868B10

28

ANOINTED FAITH FAMILY CHURCH  
131-803

1

RODGERS  
S/D L/R  
044-046