

4868C7

4867A3

Harris Central Appraisal District

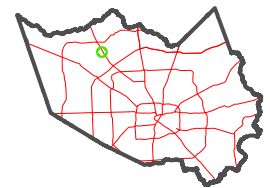


0 45 90 180 Feet

PUBLICATION DATE: 1/5/2023

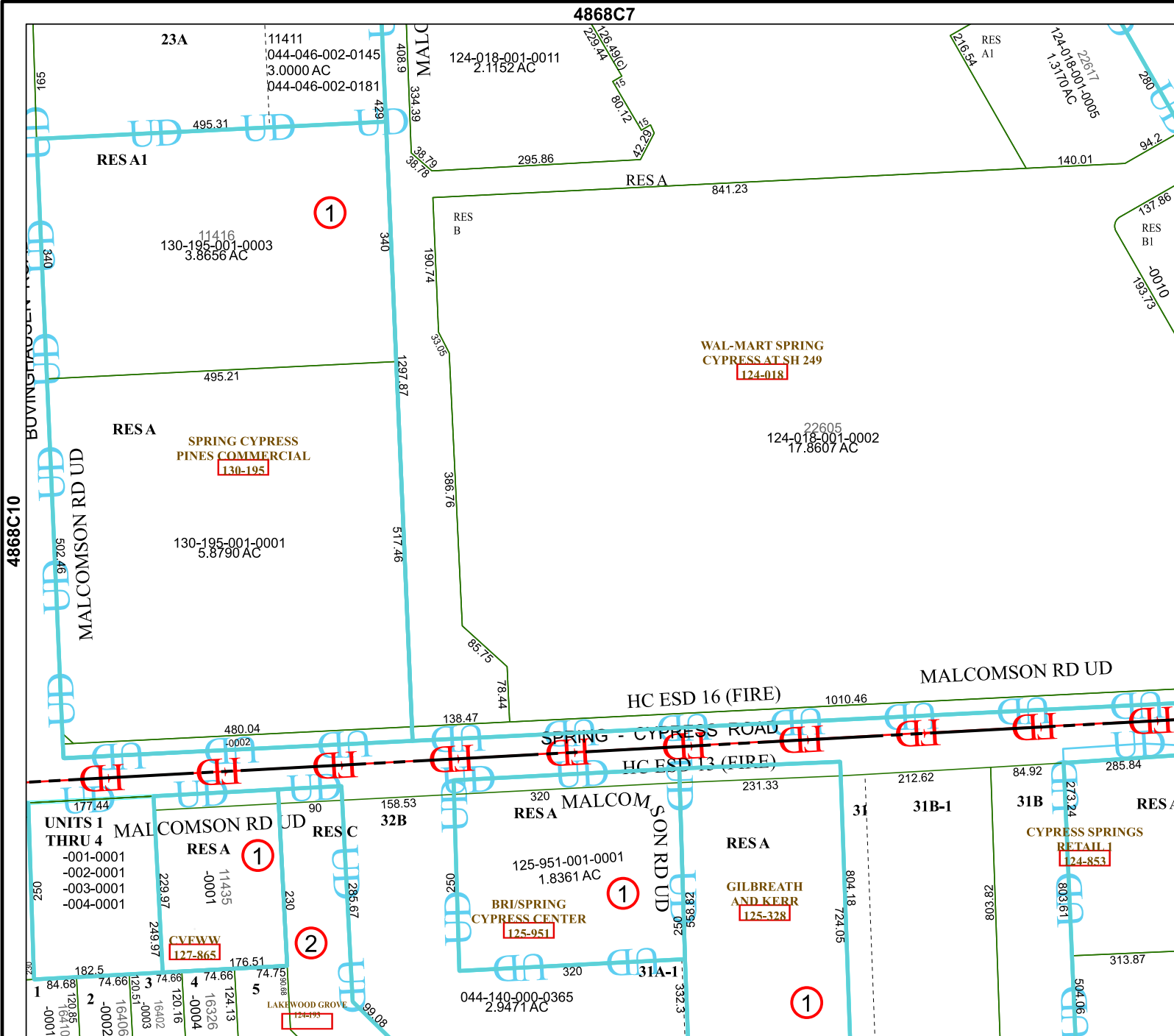
Geospatial or map data maintained by the Harris Central Appraisal District is for informational purposes and may not have been prepared for or be suitable for legal, engineering, or surveying purposes. It does not represent an on-the-ground survey and only represents the approximate location of property boundaries.

MAP LOCATION



FACET 4868C11

5	6	7	8	5
9	10	11	12	9
1	2	3	4	1



1

130-195

124-018

130-195

124-018

1

127-865

125-951

125-328

124-853

2

1

1