

# Harris Central Appraisal District

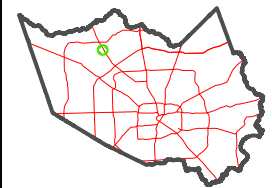


0 45 90 180 Feet

PUBLICATION DATE:  
1/23/2024

Geospatial or map data maintained by the Harris Central Appraisal District is for informational purposes and may not have been prepared for or be suitable for legal, engineering, or surveying purposes. It does not represent an on-the-ground survey and only represents the approximate location of property boundaries.

MAP LOCATION

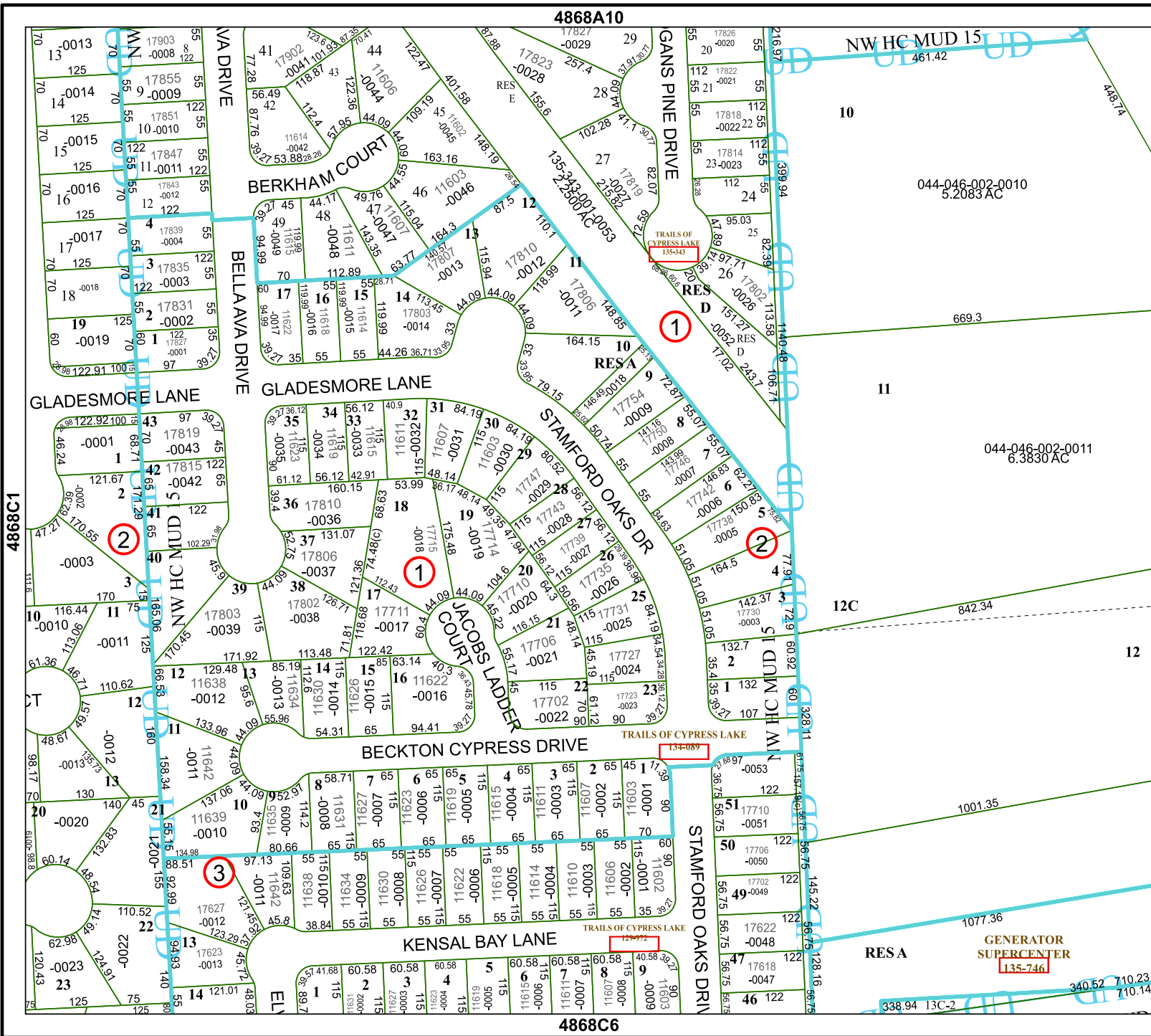


## FACET 4868C2

12	9	10	11	12
4	1	2	3	4
8	5	6	7	8

4868A10

4868C6



4868C1

4868C3

