

Harris Central Appraisal District

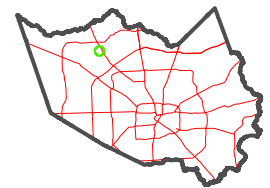


0 45 90 180 Feet

PUBLICATION DATE:
12/30/2023

Geospatial or map data maintained by the Harris Central Appraisal District is for informational purposes and may not have been prepared for or be suitable for legal, engineering, or surveying purposes. It does not represent an on-the-ground survey and only represents the approximate location of property boundaries.

MAP LOCATION



FACET 4868C5

3	4	1	2	3
7	8	5	6	7
11	12	9	10	11

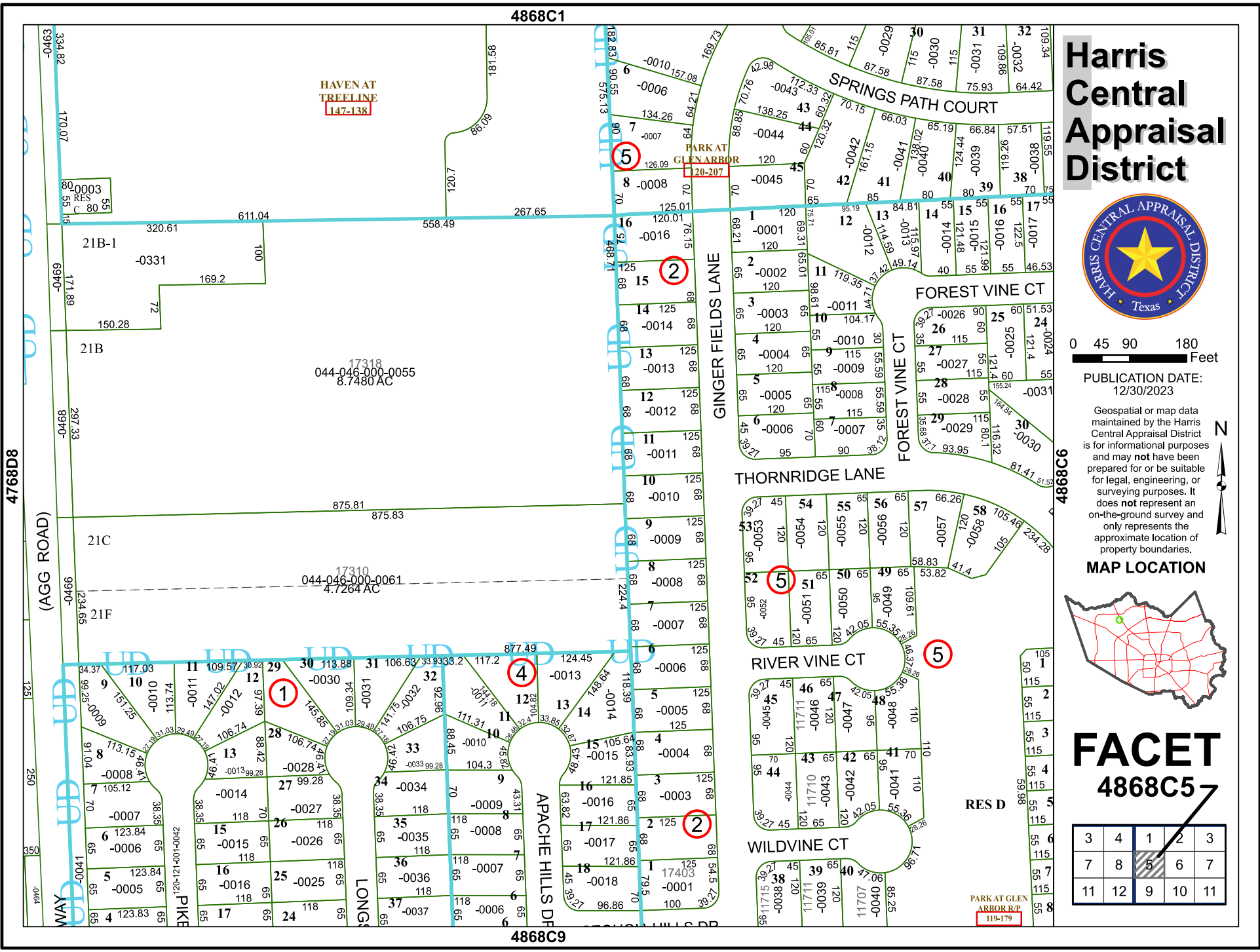
4868C1

4868C9

HAVEN AT
TREELINE
147-138

PARK AT
GLEN ARBOR
120-207

PARK AT GLEN
ARBOR R/P
119-179



4768D8

4868C6

RES D