

4870C10

RES B

WILLOW FALLS  
124-696

# Harris Central Appraisal District

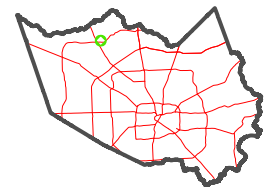


0 45 90 180 Feet

PUBLICATION DATE:  
1/5/2023

Geospatial or map data maintained by the Harris Central Appraisal District is for informational purposes and may not be suitable for legal, engineering, or surveying purposes. It does not represent an on-the-ground survey and only represents the approximate location of property boundaries.

MAP LOCATION

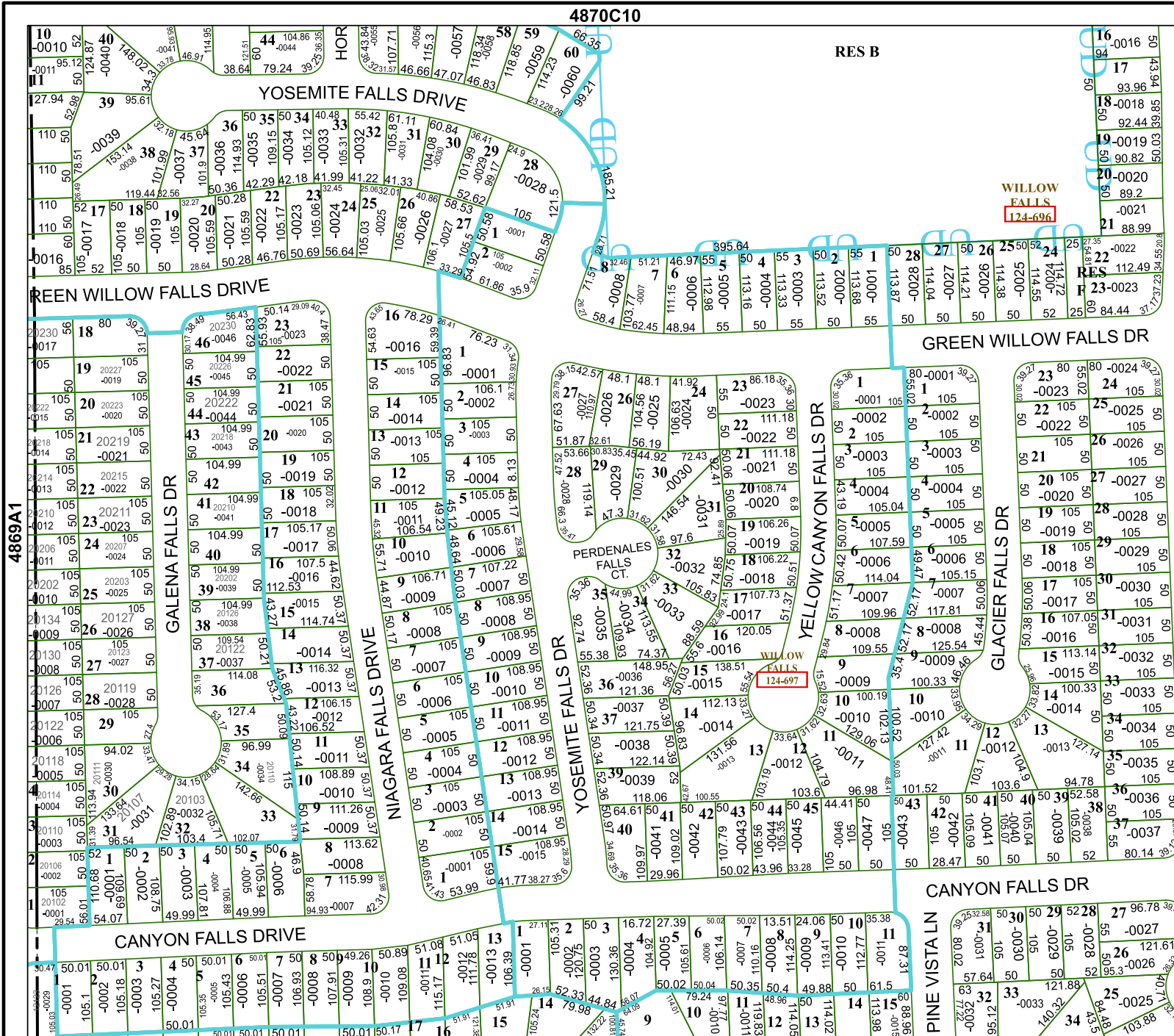


# FACET

4869A2

|    |   |    |    |    |
|----|---|----|----|----|
| 12 | 9 | 10 | 11 | 12 |
| 4  | 1 | 2  | 3  | 4  |
| 8  | 5 | 6  | 7  | 8  |

4869A6



4869A1

4869A3

