

Harris Central Appraisal District

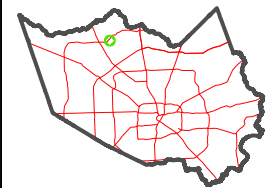


0 45 90 180 Feet

PUBLICATION DATE:
4/8/2024

Geospatial or map data maintained by the Harris Central Appraisal District is for informational purposes and may not have been prepared for or be suitable for legal, engineering, or surveying purposes. It does not represent an on-the-ground survey and only represents the approximate location of property boundaries.

MAP LOCATION

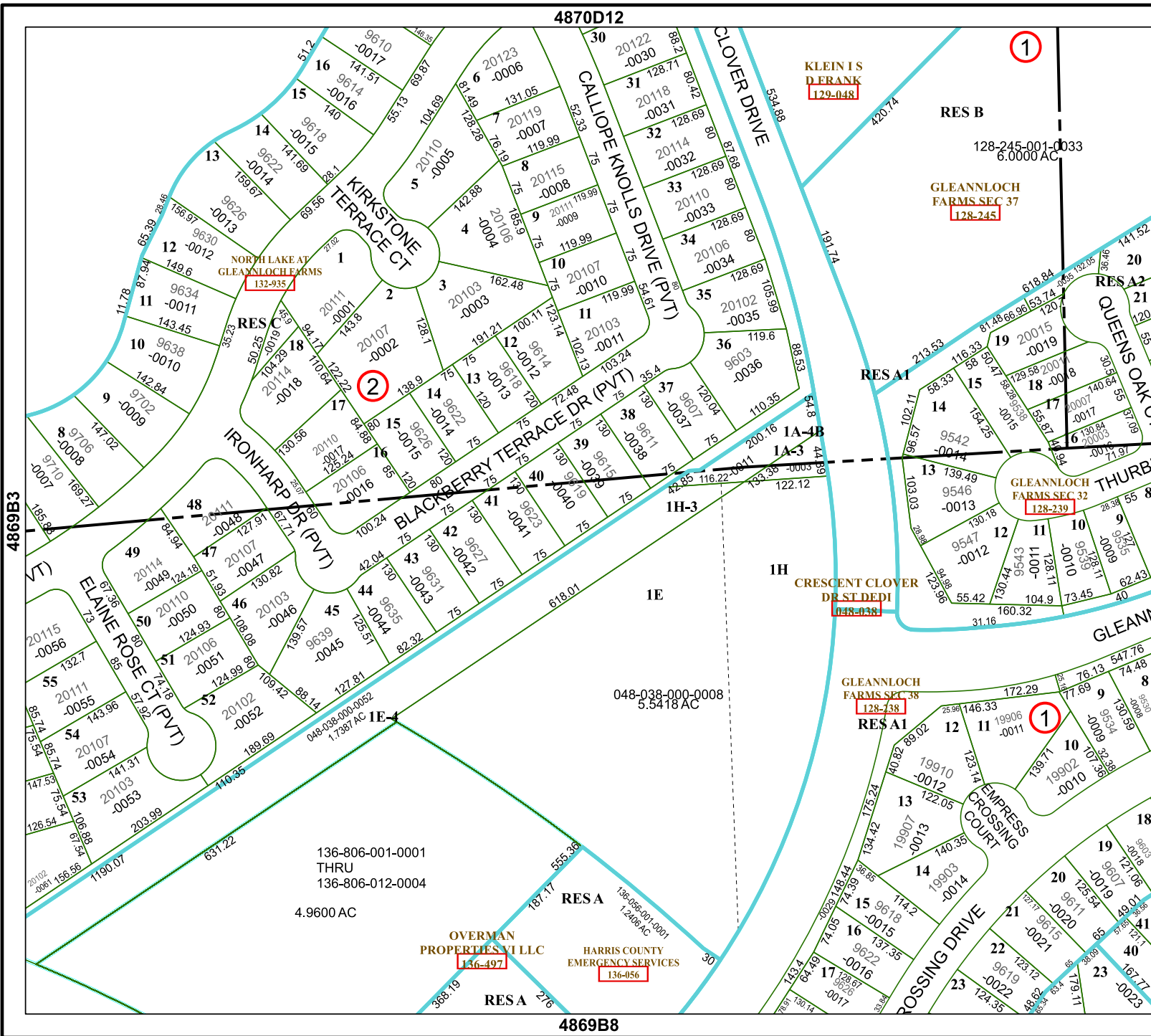


FACET 4869B4

10	11	12	9	10
2	3	4	1	2
6	7	8	5	6

4870D12

4869B8



KLEIN I S
FRANK
129-048

GLEANNLOCH
FARMS SEC 37
128-245

1

2

1

136-806-001-0001
THRU
136-806-012-0004
4.9600 AC

OVERMAN
PROPERTIES VILLC
136-497

HARRIS COUNTY
EMERGENCY SERVICES
136-056

048-038-000-0008
5.5418 AC

GLEANNLOCH
FARMS SEC 38
128-738

RES B

128-245-001-0033
6.0000 AC

RES A1

1A-4B

1A-3

1H

CRESCENT CLOVER
DR ST DEPI
048-038

1E

RES A1

RES A1

EMPERESS
CROSSING
COURT

CROSSING
DRIVE

RES A1

RES A1

RES A1

RES A1

RES A1

RES A1

RES A1

RES A1

RES A1

RES A1

RES A1

RES A1

RES A1

RES A1

RES A1

RES A1

RES A1

RES A1

RES A1

RES A1