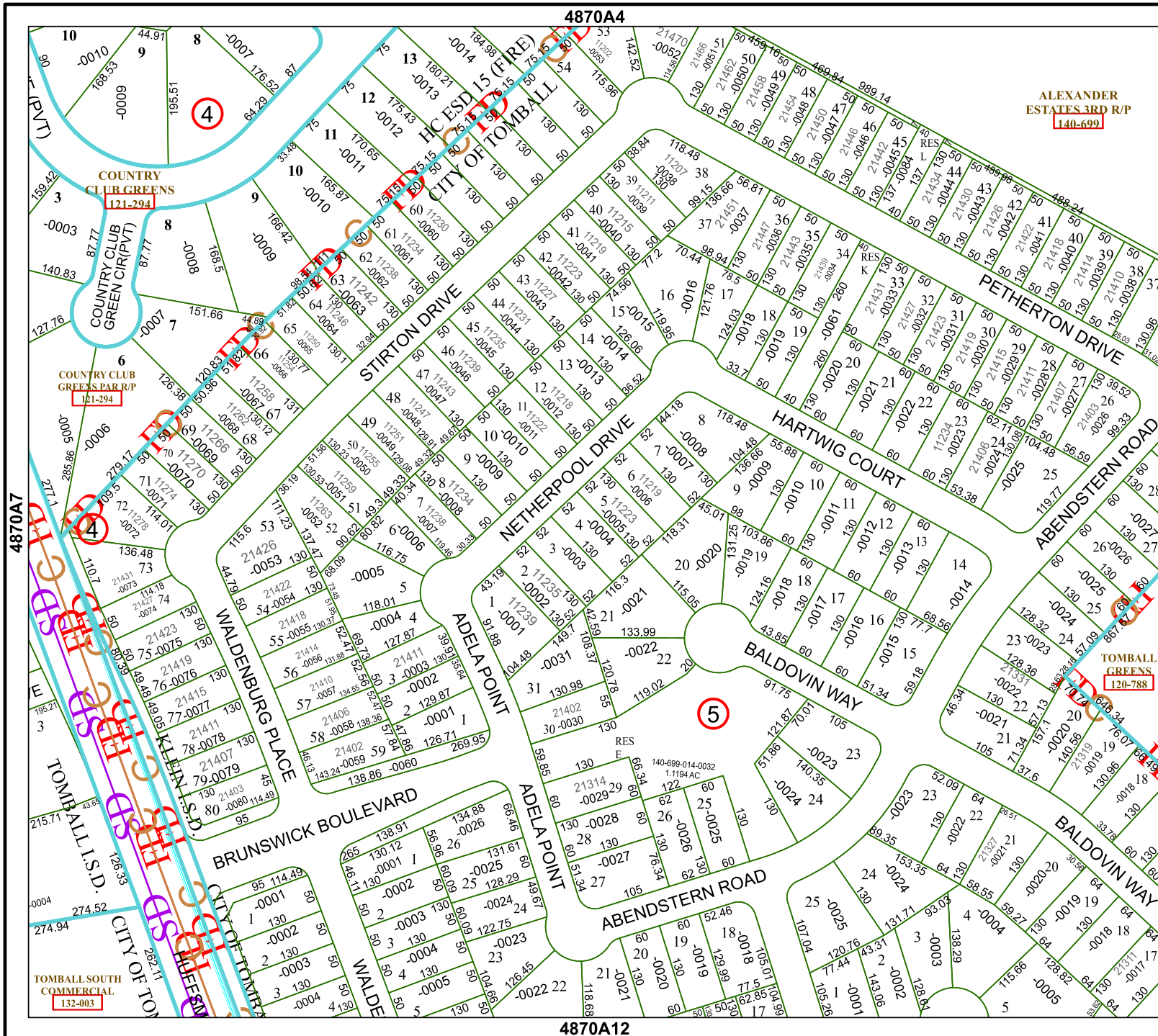


4870A4

4870A12



ALEXANDER
ESTATES 3RD R/P
140-699

Harris Central Appraisal District

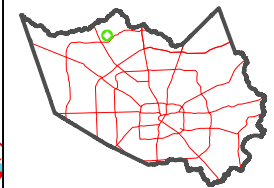


0 45 90 180
Feet

PUBLICATION DATE:
1/10/2025

Geospatial or map data maintained by the Harris Central Appraisal District is for informational purposes and may not have been prepared for or be suitable for legal, engineering, or surveying purposes. It does not represent an on-the-ground survey and only represents the approximate location of property boundaries.

MAP LOCATION



FACET 4870A8

2	3	4	1	2
6	7	8	5	6
10	11	12	9	10