

Harris Central Appraisal District

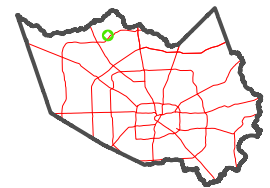


0 45 90 180 Feet

PUBLICATION DATE:
5/22/2023

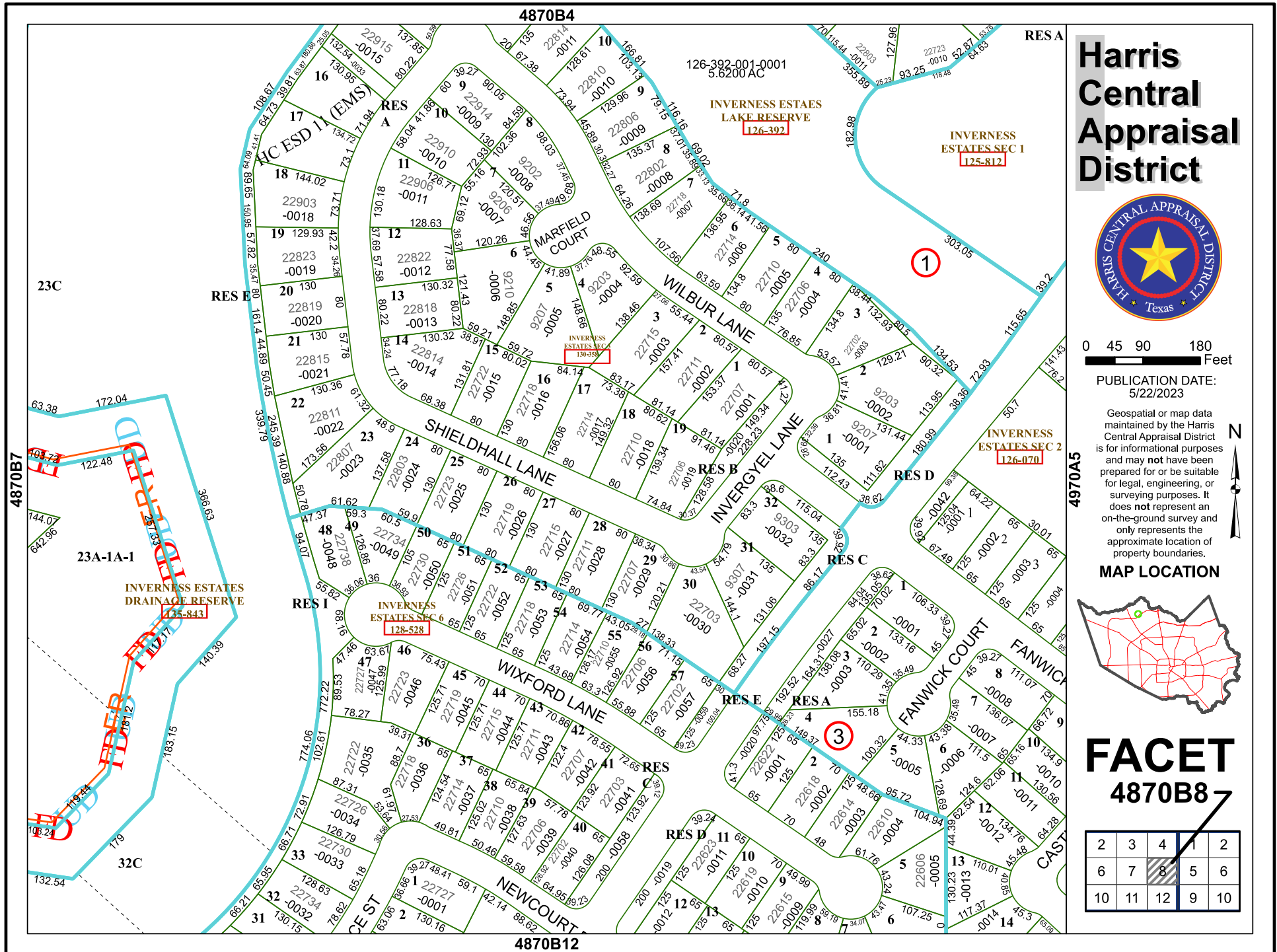
Geospatial or map data maintained by the Harris Central Appraisal District is for informational purposes and may not have been prepared for or be suitable for legal, engineering, or surveying purposes. It does not represent an on-the-ground survey and only represents the approximate location of property boundaries.

MAP LOCATION



FACET 4870B8

2	3	4	5	6
6	7	8	9	10
10	11	12	13	14



4870B4

RESA

126-392-001-0001
5.6200 AC

INVERNESS ESTATES
LAKE RESERVE
126-392

INVERNESS
ESTATES SEC 1
125-812

1

4970A5

INVERNESS
ESTATES SEC 2
126-070

4870B7

INVERNESS ESTATES
DRAINAGE RESERVE
125-843

INVERNESS
ESTATES SEC 6
128-528

3

4870B12

