

# Harris Central Appraisal District

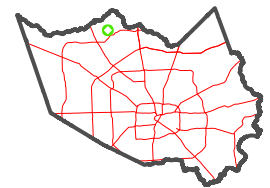


0 45 90 180 Feet

PUBLICATION DATE:  
2/28/2024

Geospatial or map data maintained by the Harris Central Appraisal District is for informational purposes and may not have been prepared for or be suitable for legal, engineering, or surveying purposes. It does not represent an on-the-ground survey and only represents the approximate location of property boundaries.

MAP LOCATION

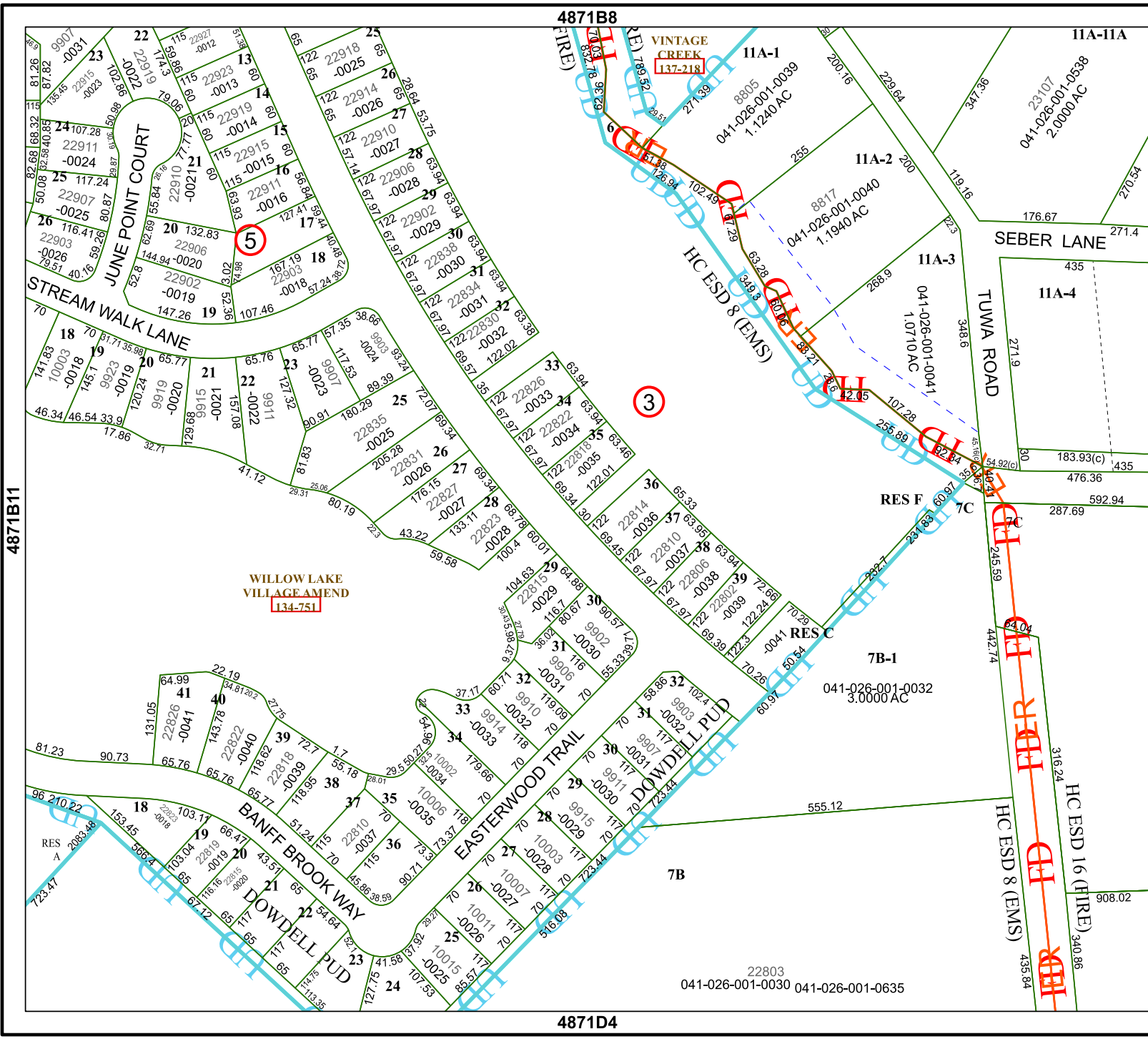


## FACET 4871B12

6	7	8	5	6
10	11	12	9	10
2	3	4	1	2

4871B8

4871D4



4871B11

4971A9

22803  
041-026-001-0030 041-026-001-0635