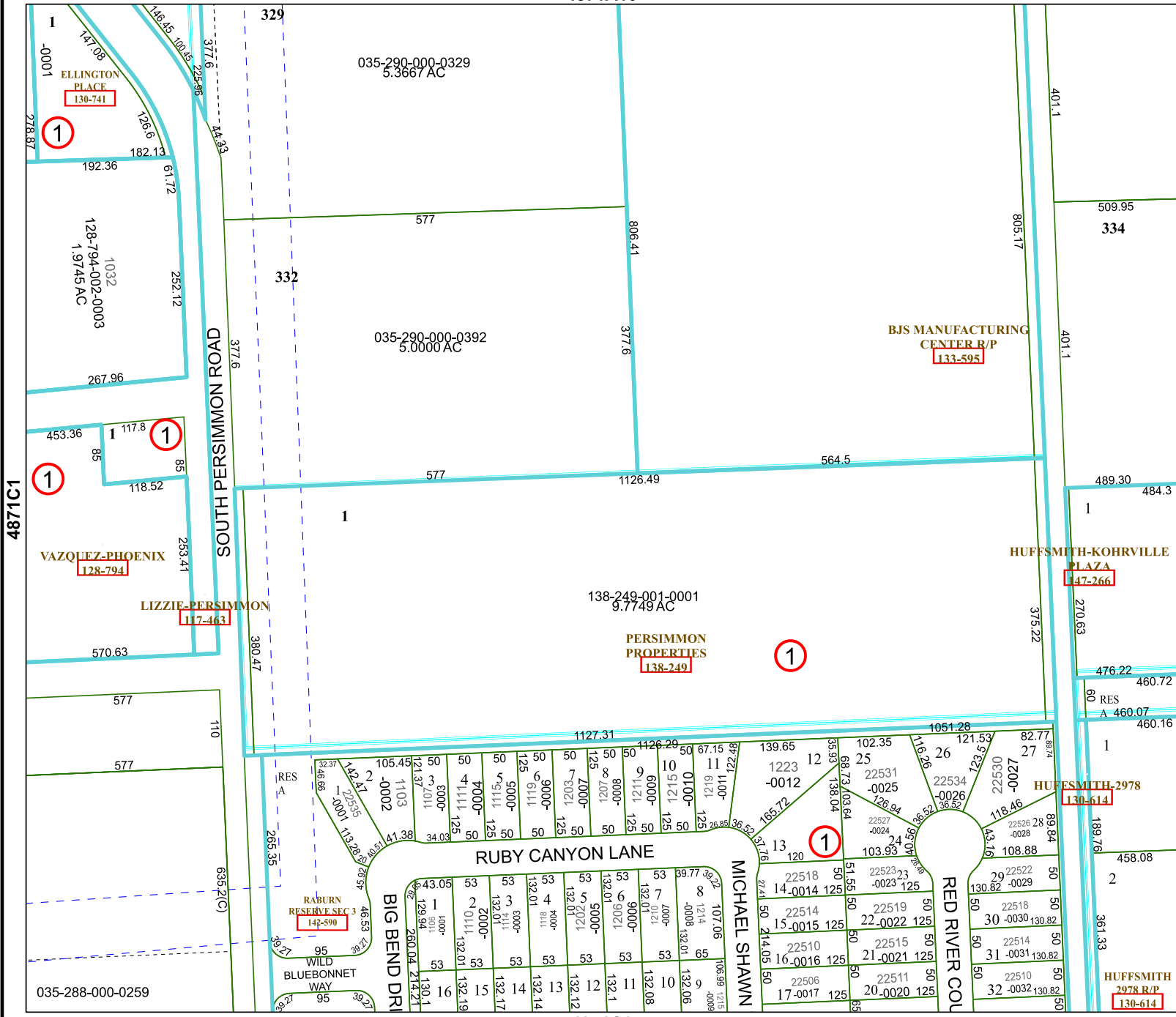


4871A10



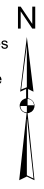
# Harris Central Appraisal District



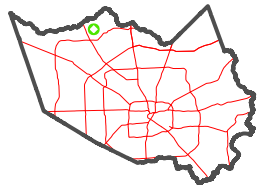
0 45 90 180 Feet

PUBLICATION DATE: 3/25/2024

Geospatial or map data maintained by the Harris Central Appraisal District is for informational purposes and may not have been prepared for or be suitable for legal, engineering, or surveying purposes. It does not represent an on-the-ground survey and only represents the approximate location of property boundaries.



## MAP LOCATION



# FACET 4871C2

12	9	10	11	12
4	1	2	3	4
8	5	6	7	8

4871C1

4871C3

4871C6

ELLINGTON PLACE  
130-741

VAZQUEZ-PHOENIX  
128-794

LIZZIE-PERSIMMON  
117-463

035-290-000-0329  
5.3667 AC

035-290-000-0392  
5.0000 AC

138-249-001-0001  
9.7749 AC

PERSIMMON PROPERTIES  
138-249

BJS MANUFACTURING CENTER R/P  
133-595

HUFFSMITH-KOHRVILLE PLAZA  
147-266

HUFFSMITH-2978  
130-614

RABURN RESERVE SEC  
142-590

HUFFSMITH 2978 R/P  
130-614

035-288-000-0259