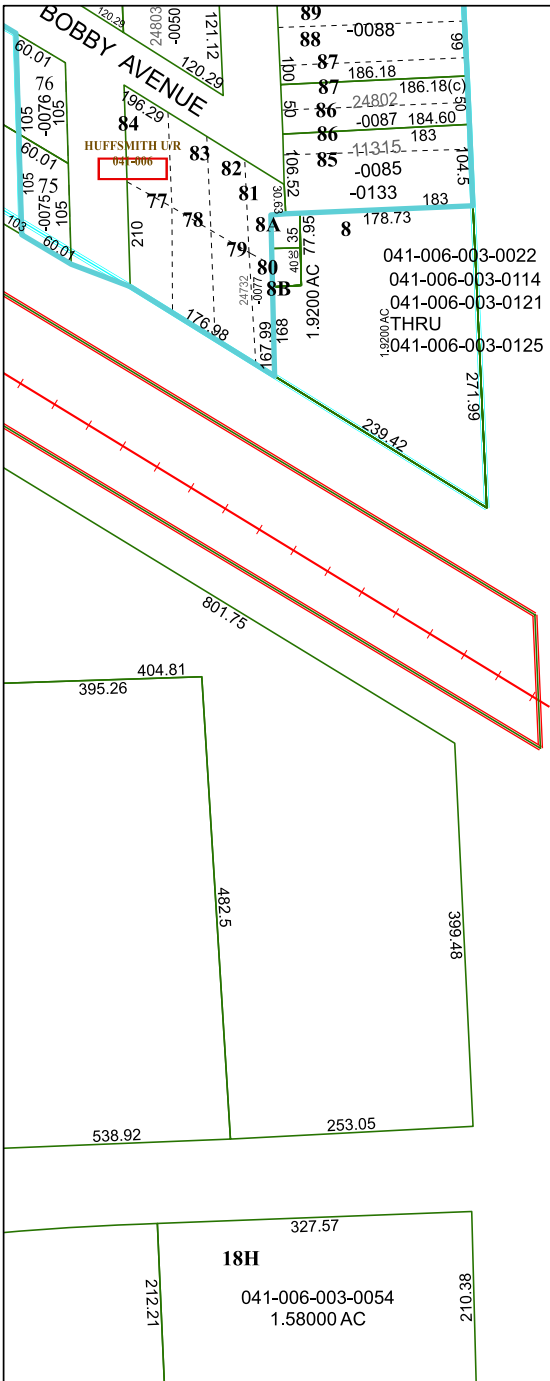


4872A7

4872C3

4872A10

4872A12



F.M. 2978

HC ESD 15 (FIRE)

(HUFFSMITH-KORVILLE RD)

RES A

WOODWAY EQUESTRIAN CENTER  
141-314

1

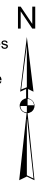
# Harris Central Appraisal District



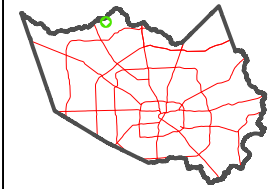
0 45 90 180 Feet

PUBLICATION DATE:  
4/8/2024

Geospatial or map data maintained by the Harris Central Appraisal District is for informational purposes and may not have been prepared for or be suitable for legal, engineering, or surveying purposes. It does not represent an on-the-ground survey and only represents the approximate location of property boundaries.



MAP LOCATION



## FACET

4872A11

5	6	7	8	5
9	10	11	12	9
1	2	3	4	1