

Harris Central Appraisal District

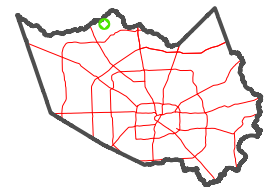


0 45 90 180 Feet

PUBLICATION DATE: 4/22/2024

Geospatial or map data maintained by the Harris Central Appraisal District is for informational purposes and may not have been prepared for or be suitable for legal, engineering, or surveying purposes. It does not represent an on-the-ground survey and only represents the approximate location of property boundaries.

MAP LOCATION

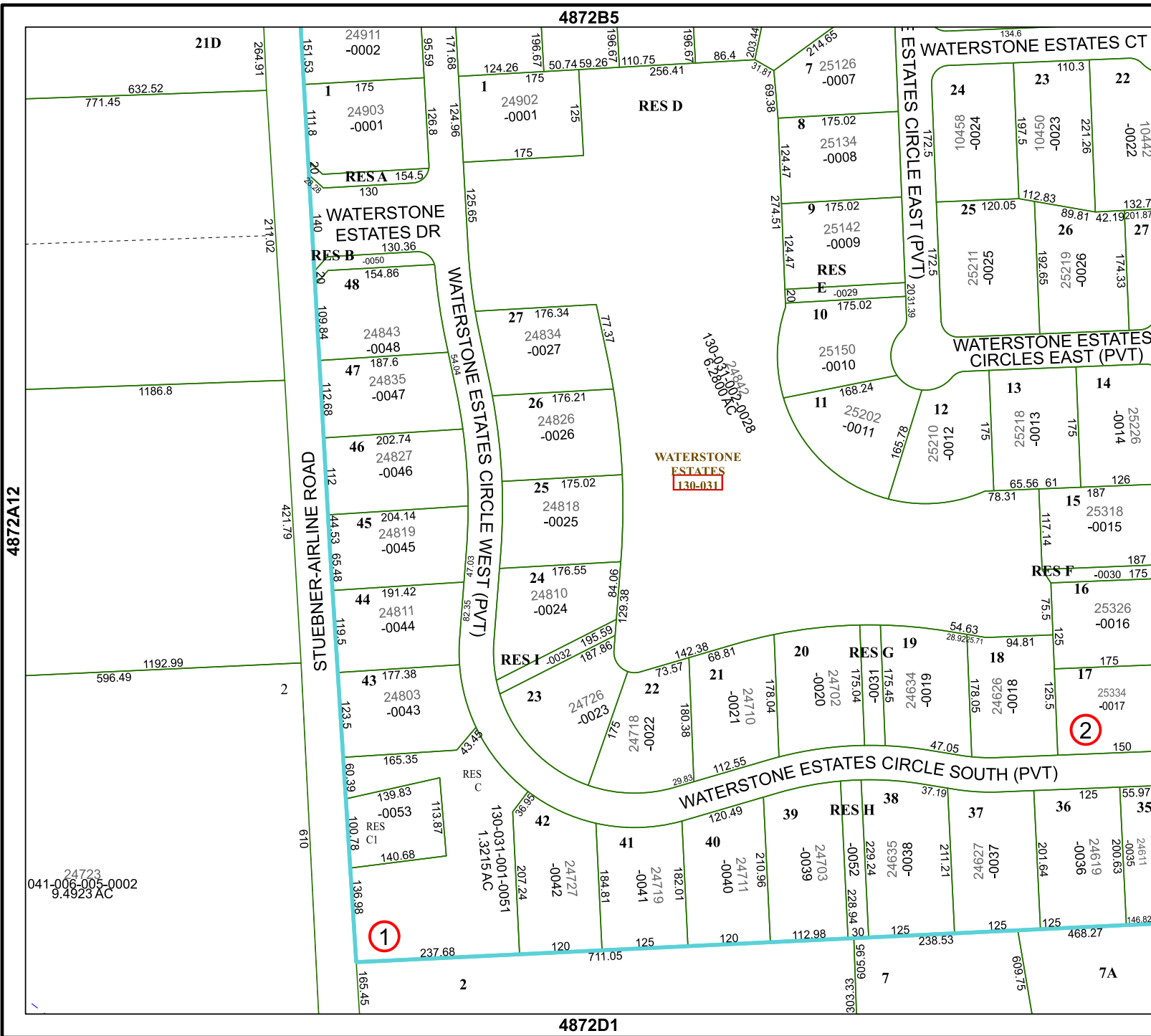


FACET 4872B9

7	8	5	6	7
11	12	9	10	11
3	4	1	2	3

4872B5

4872D1



4872A12

4872B10

24723
041-006-005-0002
9.4923 AC

WATERSTONE
ESTATES
130-031