

4872C7

Harris Central Appraisal District



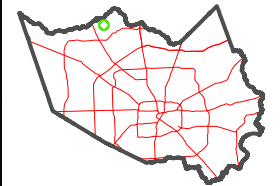
0 45 90 180 Feet

PUBLICATION DATE:
4/8/2024

Geospatial or map data maintained by the Harris Central Appraisal District is for informational purposes and may not have been prepared for or be suitable for legal, engineering, or surveying purposes. It does not represent an on-the-ground survey and only represents the approximate location of property boundaries.



MAP LOCATION

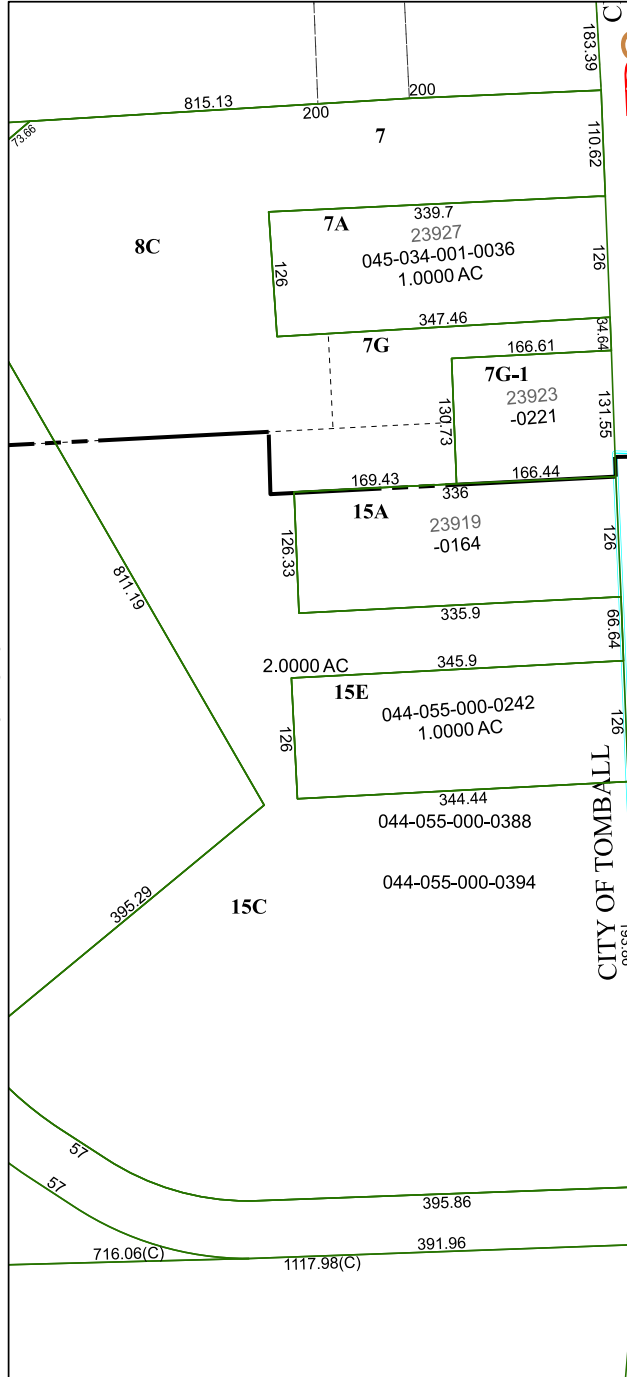


FACET

4872C11

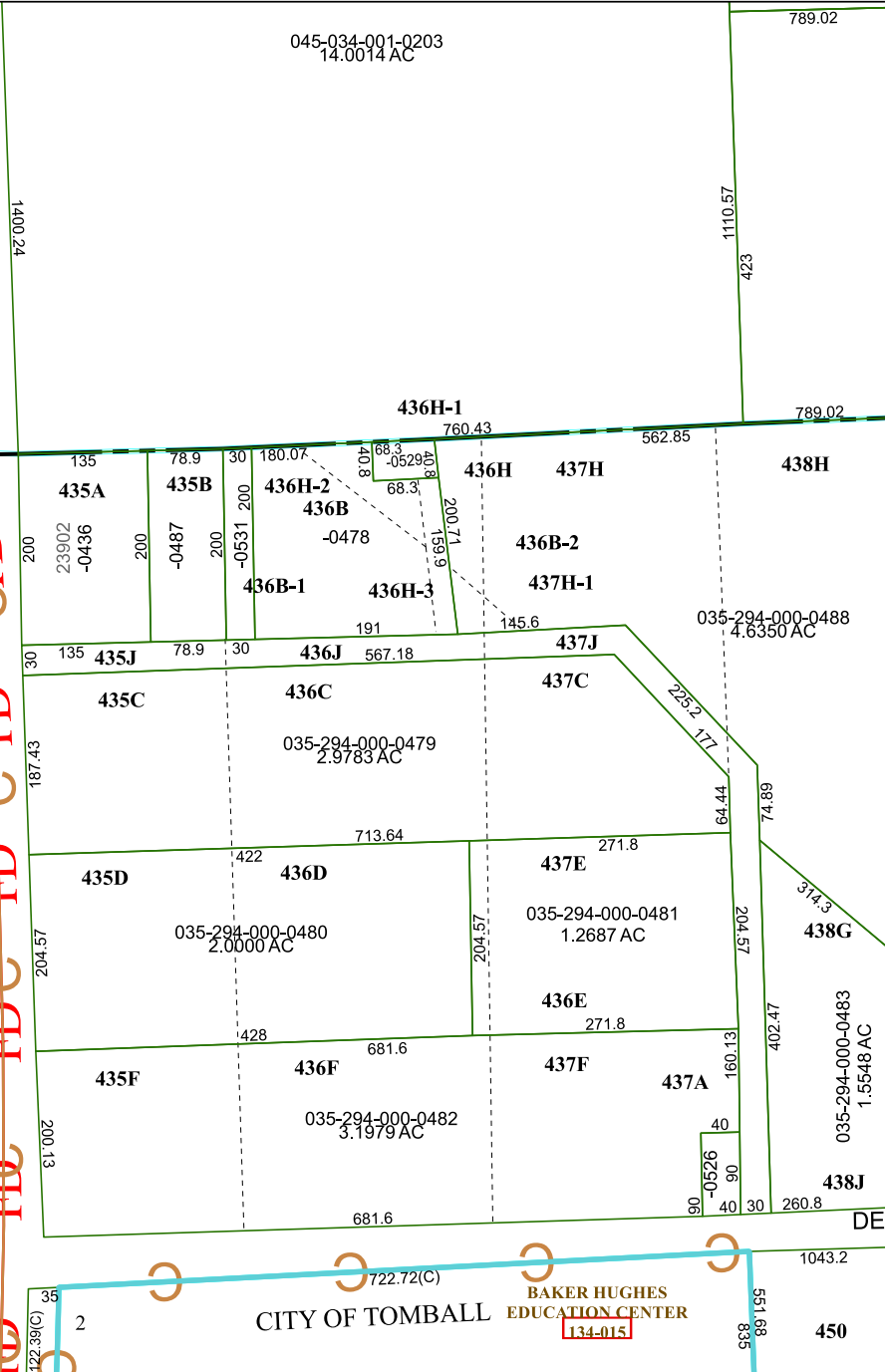
5	6	7	8	5
9	10	11	12	9
1	2	3	4	1

4872C10



CITY OF TOMBALL

FD
FD
FD
FD
FD
FD
FD
FD
FD
FD
FD
FD
FD
FD
FD
FD



4871A3

CITY OF TOMBALL
BAKER HUGHES EDUCATION CENTER
134-015