

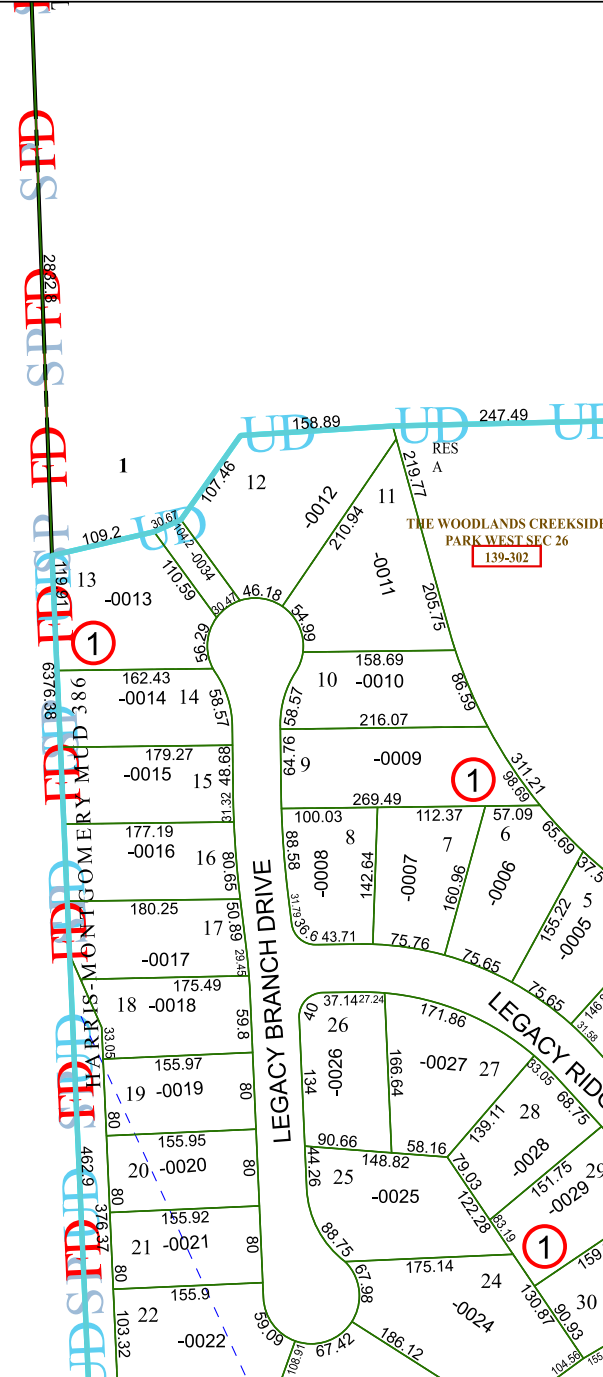
4873B6

4873B9

1

041-006-004-0001
161.9600 AC

4873D2



Harris Central Appraisal District

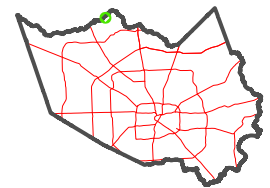


0 45 90 180 Feet

PUBLICATION DATE:
1/5/2023

Geospatial or map data maintained by the Harris Central Appraisal District is for informational purposes and may **not** have been prepared for or be suitable for legal, engineering, or surveying purposes. It does **not** represent an on-the-ground survey and only represents the approximate location of property boundaries.

MAP LOCATION



FACET

4873B10

8	5	6	7	8
12	9	10	11	12
4	1	2	3	4