

4952B1

4952B9

# Harris Central Appraisal District

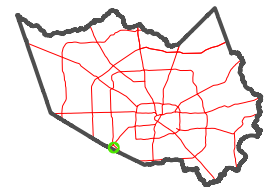


0 45 90 180 Feet

PUBLICATION DATE: 12/30/2023

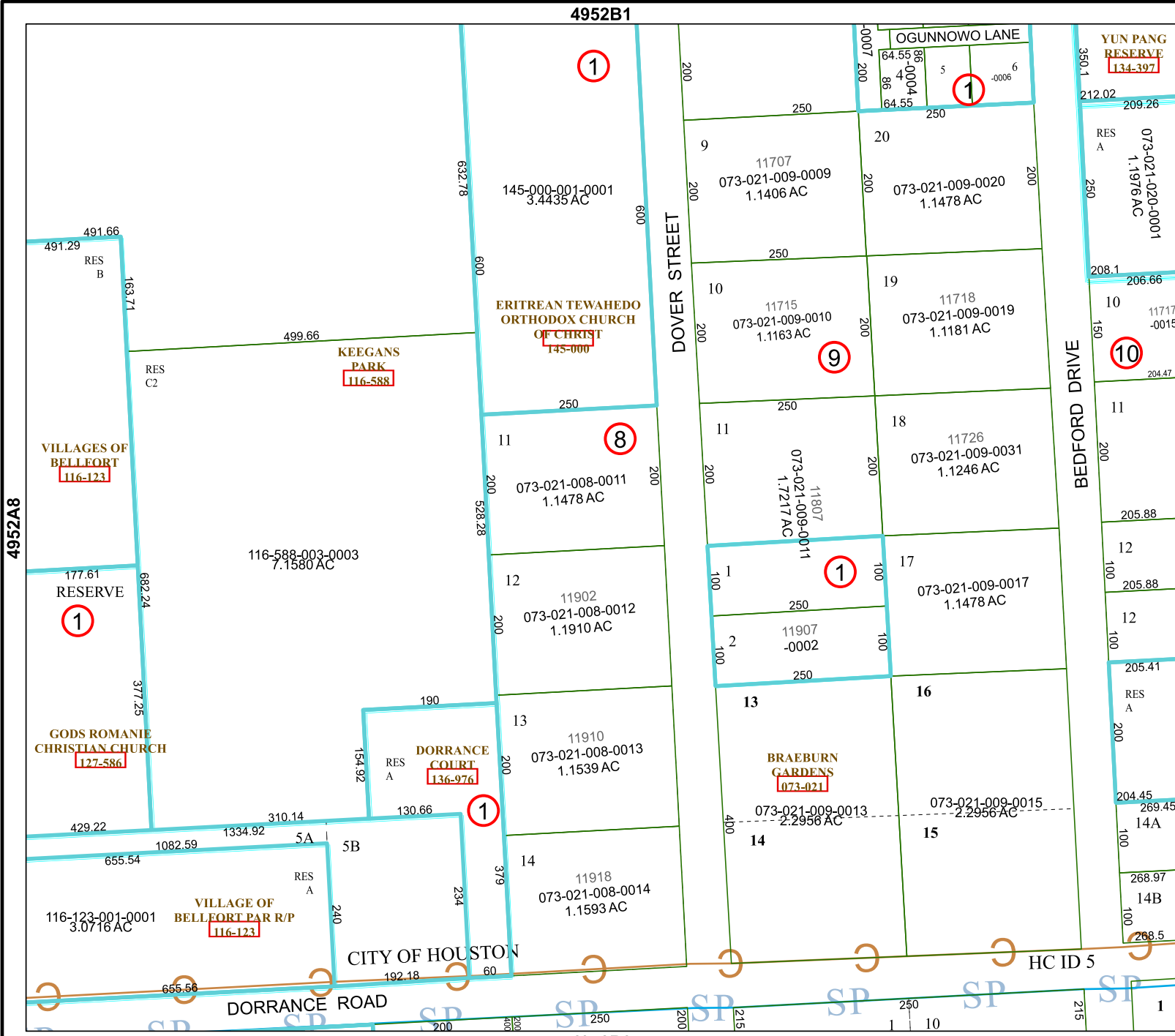
Geospatial or map data maintained by the Harris Central Appraisal District is for informational purposes and may not have been prepared for or be suitable for legal, engineering, or surveying purposes. It does not represent an on-the-ground survey and only represents the approximate location of property boundaries.

MAP LOCATION



## FACET 4952B5

3	4	1	2	3
7	8	5	6	7
11	12	9	10	11



4952A8

4952B6