

Harris Central Appraisal District

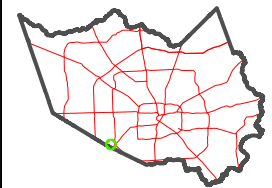


0 45 90 180 Feet

PUBLICATION DATE:
2/28/2024

Geospatial or map data maintained by the Harris Central Appraisal District is for informational purposes and may not have been prepared for or be suitable for legal, engineering, or surveying purposes. It does not represent an on-the-ground survey and only represents the approximate location of property boundaries.

MAP LOCATION



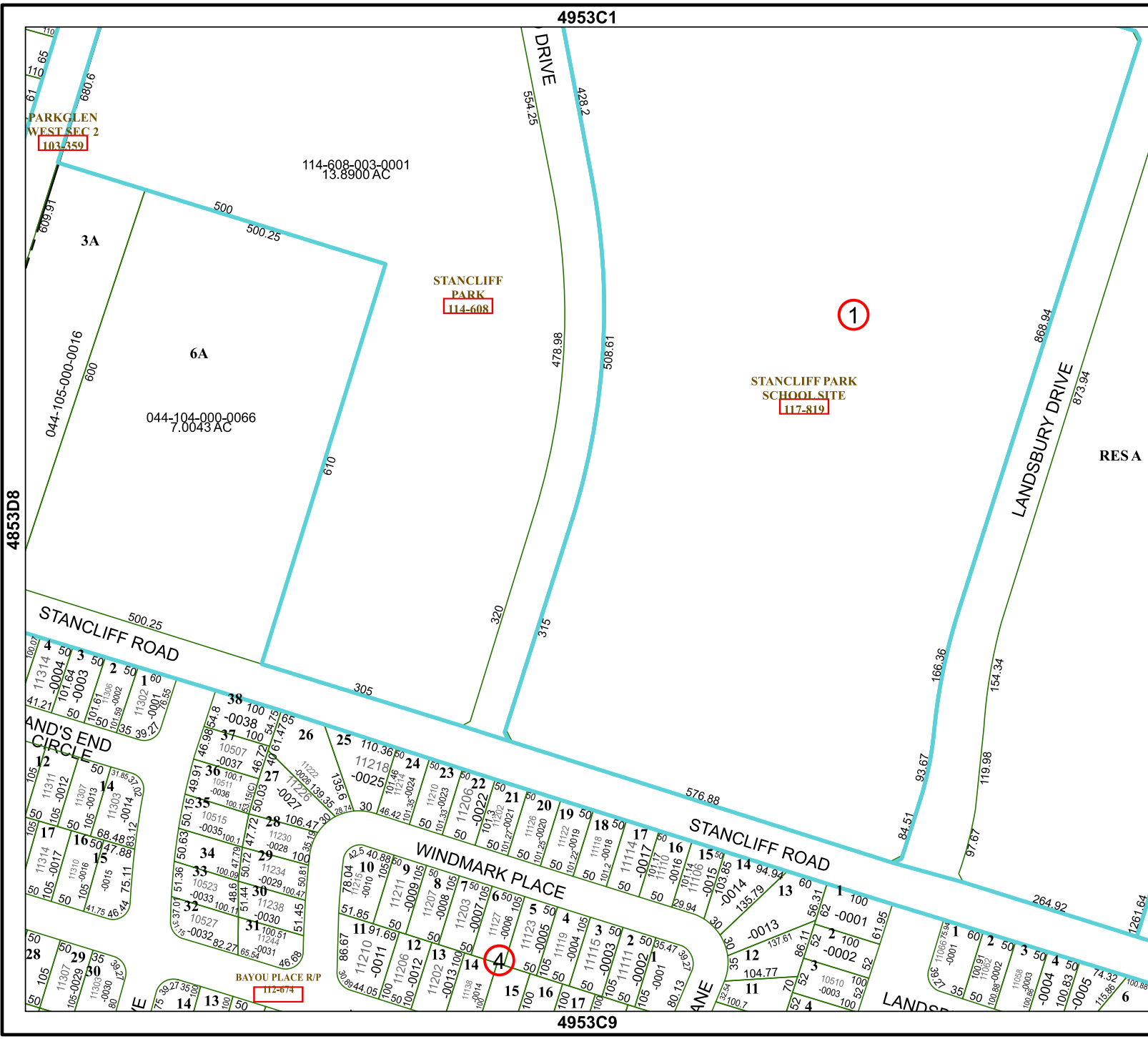
FACET

4953C5

3	4	1	2	3
7	8	5	6	7
11	12	9	10	11

4953C1

4953C9



PARKGLEN WEST SEC 2
103-359

STANCLIFF PARK
114-608

STANCLIFF PARK SCHOOL SITE
117-819

1

114-608-003-0001
13.8900 AC

044-104-000-0066
7.0043 AC

3A

6A

RESA

4953C6

4853D8

BAYOU PLACE R/P
112-674

4