

4953D7

4953D10

Harris Central Appraisal District



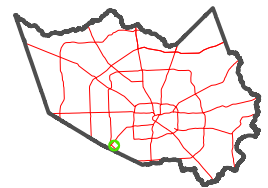
0 45 90 180 Feet

PUBLICATION DATE: 1/5/2023

Geospatial or map data maintained by the Harris Central Appraisal District is for informational purposes and may not have been prepared for or be suitable for legal, engineering, or surveying purposes. It does not represent an on-the-ground survey and only represents the approximate location of property boundaries.

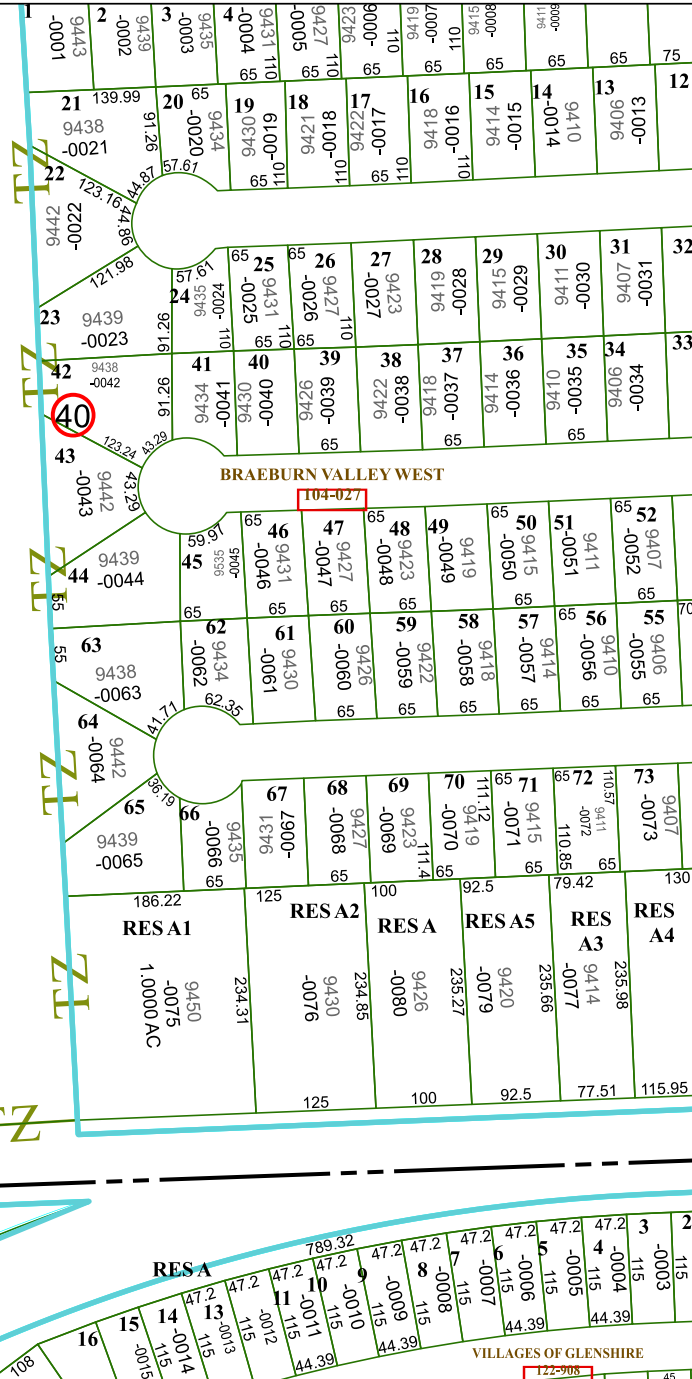


MAP LOCATION



FACET 4953D11

5	6	7	8	5
9	10	11	12	9
1	2	3	4	1



WEST BELLFORT RUFFINO SHOPPING CENTER 144-783

4952B3