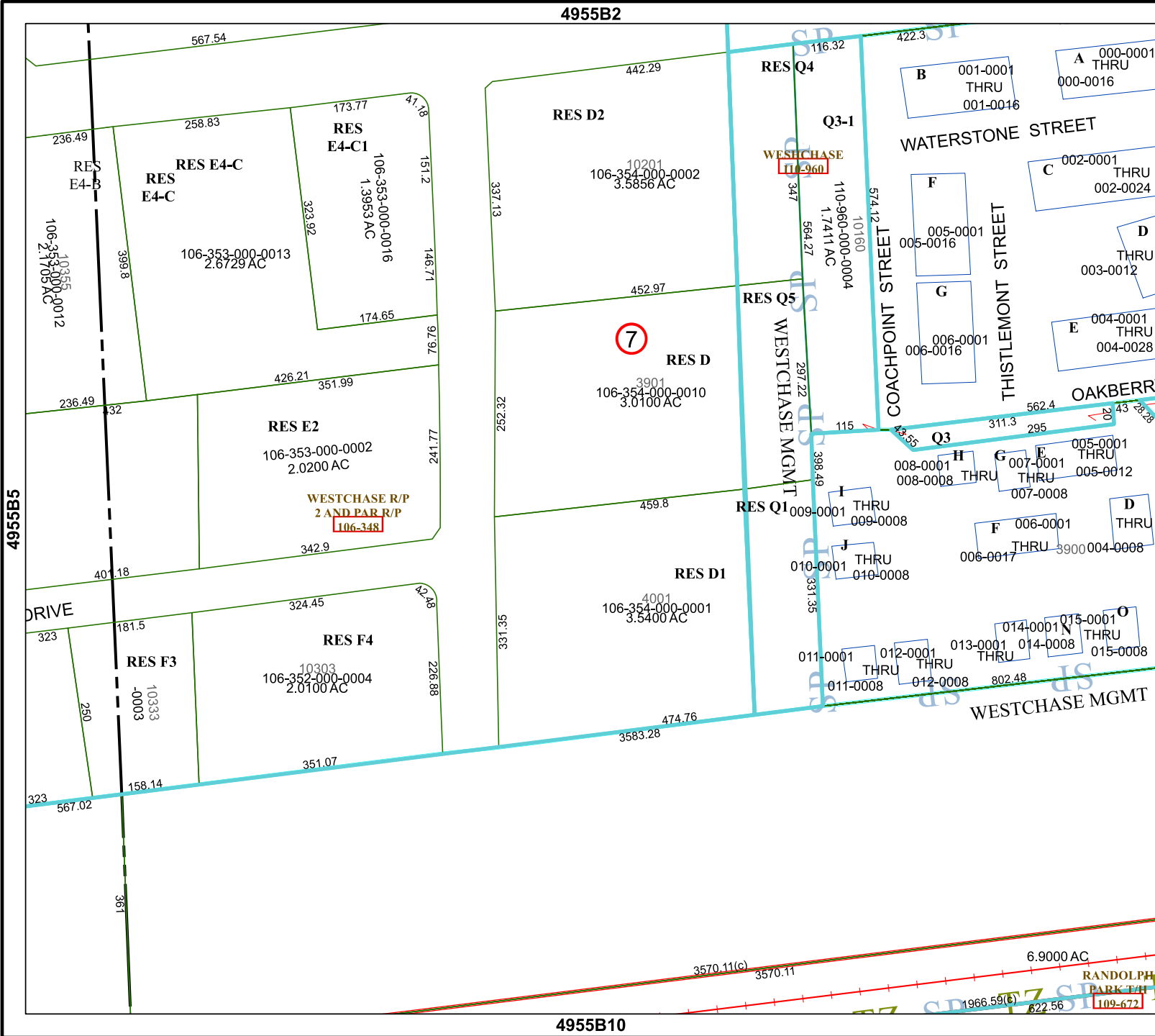


4955B2



4955B10

Harris Central Appraisal District

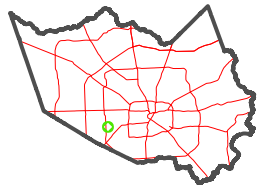


0 45 90 180 Feet

PUBLICATION DATE: 1/5/2023

Geospatial or map data maintained by the Harris Central Appraisal District is for informational purposes and may not have been prepared for or be suitable for legal, engineering, or surveying purposes. It does not represent an on-the-ground survey and only represents the approximate location of property boundaries.

MAP LOCATION



FACET 4955B6

4	1	2	3	4
8	5	6	7	8
12	9	10	11	12

4955B5

4955B7

RANDOLPH PARK T41
109-672

1966.59(C) 622.56

3570.11(C) 3570.11

6.9000 AC

