

4955B10

RES D

Harris Central Appraisal District



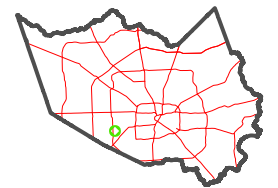
0 45 90 180 Feet

PUBLICATION DATE:
12/30/2023

Geospatial or map data maintained by the Harris Central Appraisal District is for informational purposes and may not have been prepared for or be suitable for legal, engineering, or surveying purposes. It does not represent an on-the-ground survey and only represents the approximate location of property boundaries.



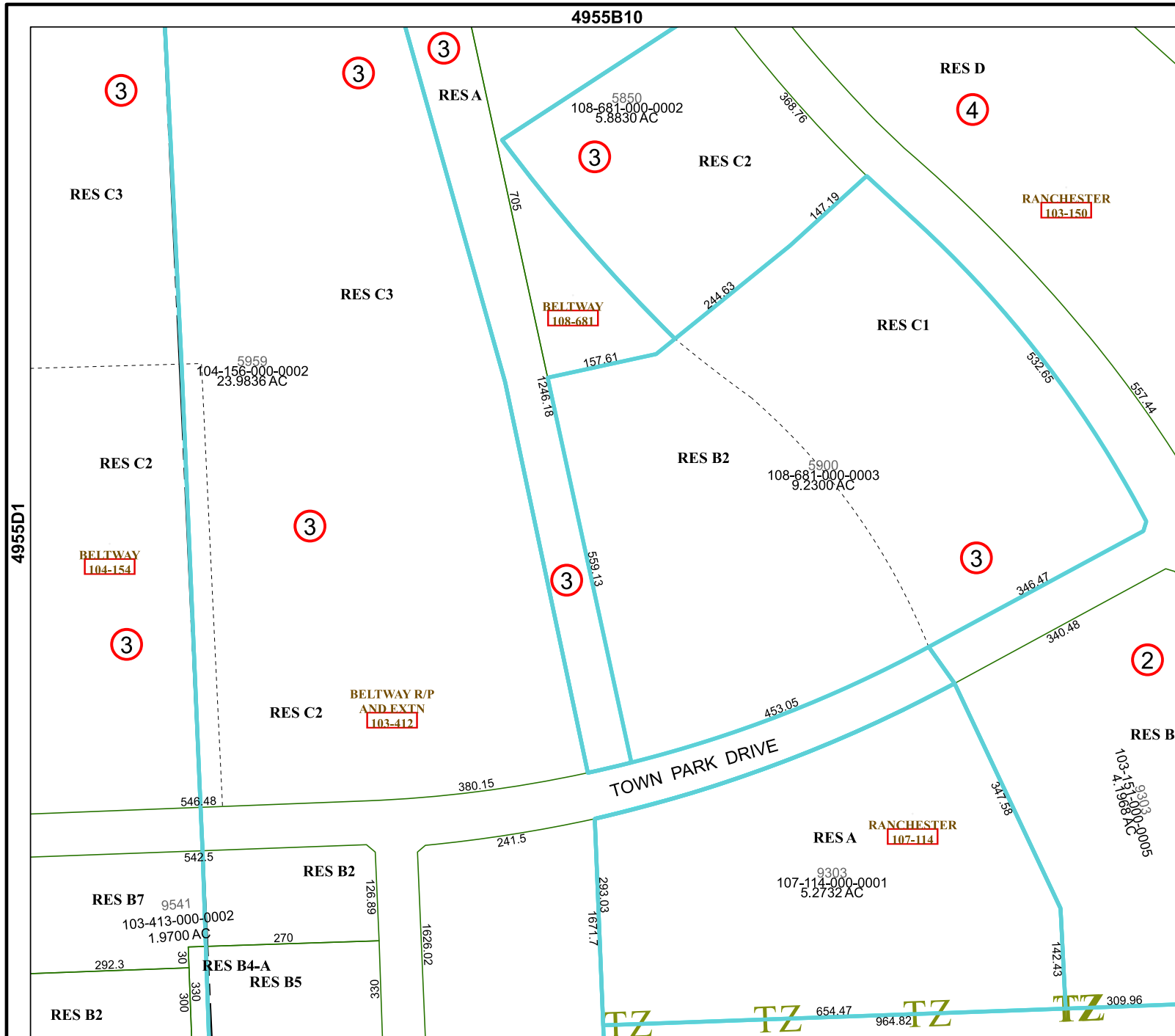
MAP LOCATION



FACET 4955D2

12	9	10	11	12
4	1	2	3	4
8	5	6	7	8

4955D6



4955D1

4955D3

103-159-000-0005
9.9300 AC