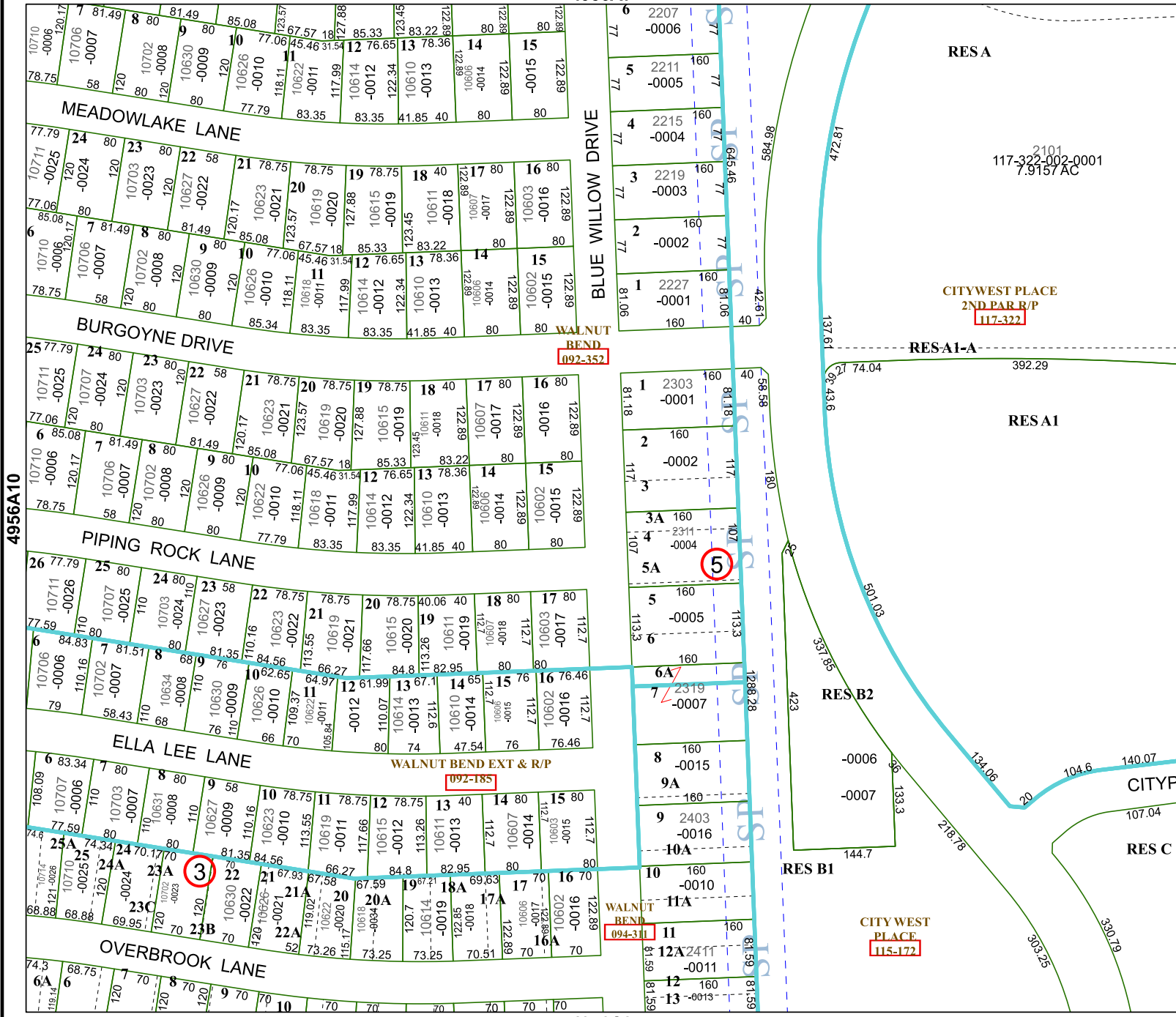


4956A7

4956C3



# Harris Central Appraisal District

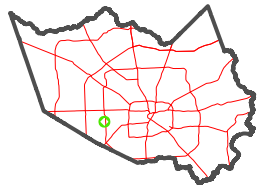


0 45 90 180 Feet

PUBLICATION DATE: 1/5/2023

Geospatial or map data maintained by the Harris Central Appraisal District is for informational purposes and may not have been prepared for or be suitable for legal, engineering, or surveying purposes. It does not represent an on-the-ground survey and only represents the approximate location of property boundaries.

### MAP LOCATION



# FACET 4956A11

5	6	7	8	5
9	10	11	12	9
1	2	3	4	1

RESA

117-322-002-0001  
7.9157 AC

CITYWEST PLACE  
2ND PAR B/P  
117-322

RESA1-A

RESA1

RES B2

RES BI

CITYP

RES C

CITYWEST PLACE  
115-172

4956A10

4956A12

