

4957C10

Harris Central Appraisal District

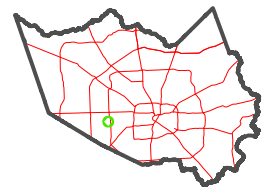


0 45 90 180 Feet

PUBLICATION DATE: 1/5/2023

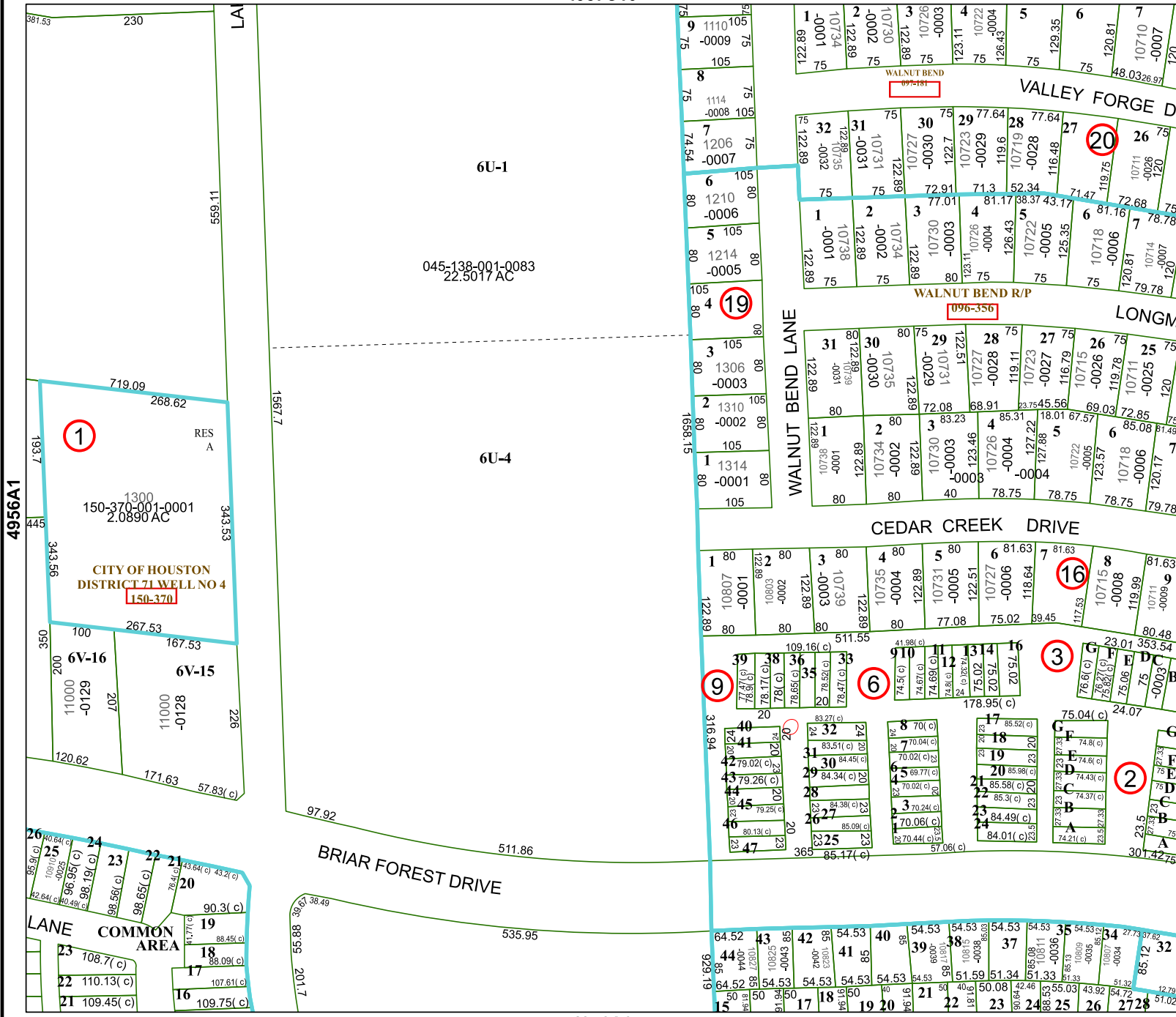
Geospatial or map data maintained by the Harris Central Appraisal District is for informational purposes and may not have been prepared for or be suitable for legal, engineering, or surveying purposes. It does not represent an on-the-ground survey and only represents the approximate location of property boundaries.

MAP LOCATION



FACET 4956A2

12	9	10	11	12
4	1	2	3	4
8	5	6	7	8



4956A1

4956A3

4956A6

6U-1
045-138-001-0083
22.5017 AC

6U-4

LANE COMMON AREA

CITY OF HOUSTON DISTRICT 71 WELL NO 4 150-370

RES A 1300 150-370-001-0001 2.0890 AC