

Harris Central Appraisal District



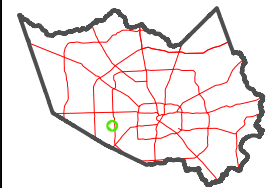
0 45 90 180 Feet

PUBLICATION DATE:
1/5/2023

Geospatial or map data maintained by the Harris Central Appraisal District is for informational purposes and may not have been prepared for or be suitable for legal, engineering, or surveying purposes. It does not represent an on-the-ground survey and only represents the approximate location of property boundaries.



MAP LOCATION

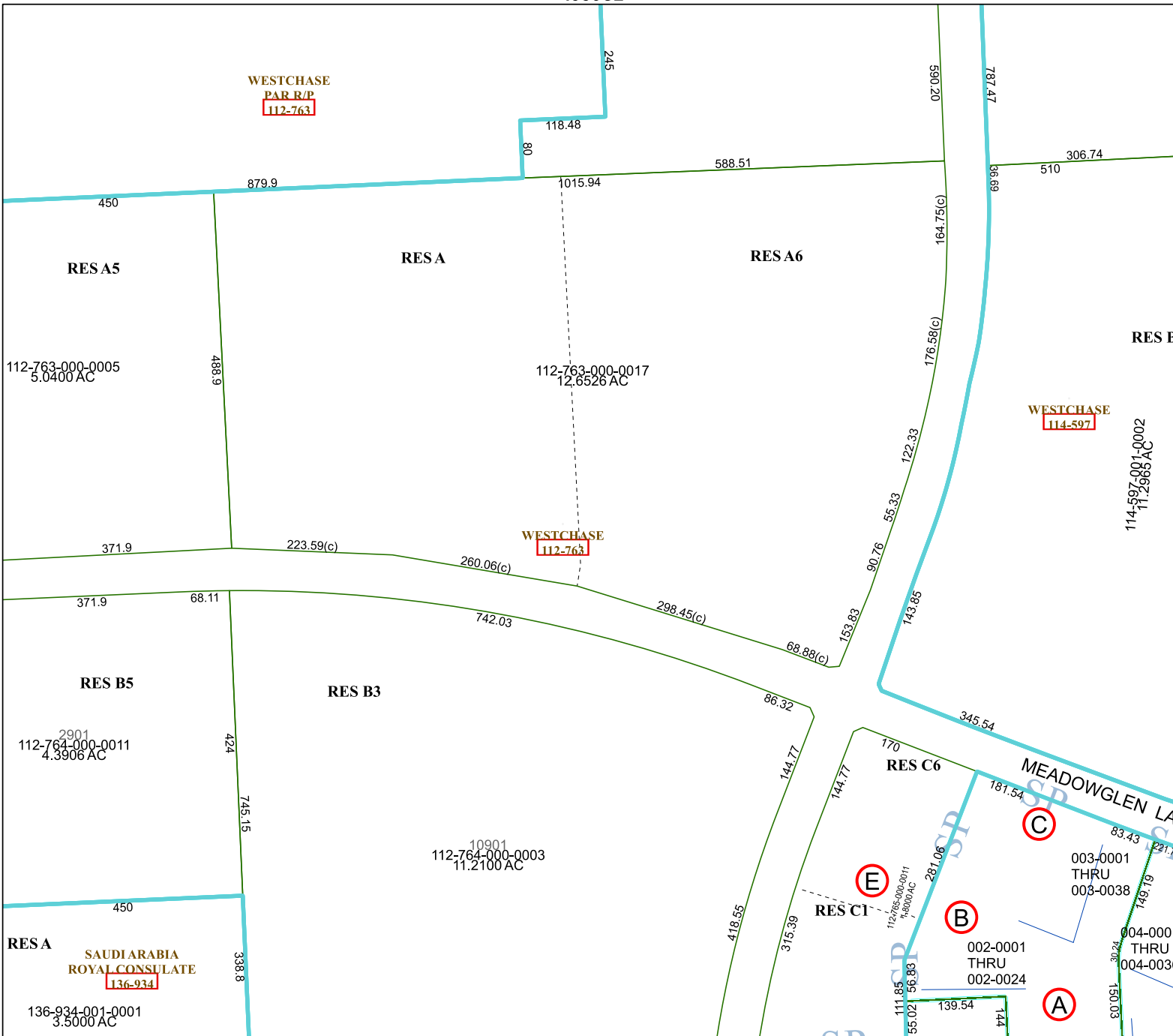


FACET 4956C6

4	1	2	3	4
8	5	6	7	8
12	9	10	11	12

4956C2

WESTCHASE
PAR R/P
112-763



4956C10

4956C5

4956C7

WESTCHASE
114-597

WESTCHASE
112-763

(C)

(E)

(B)

(A)

RES C6

RES C1

MEADOWGLEN LA

SAUDI ARABIA
ROYAL CONSULATE
136-934