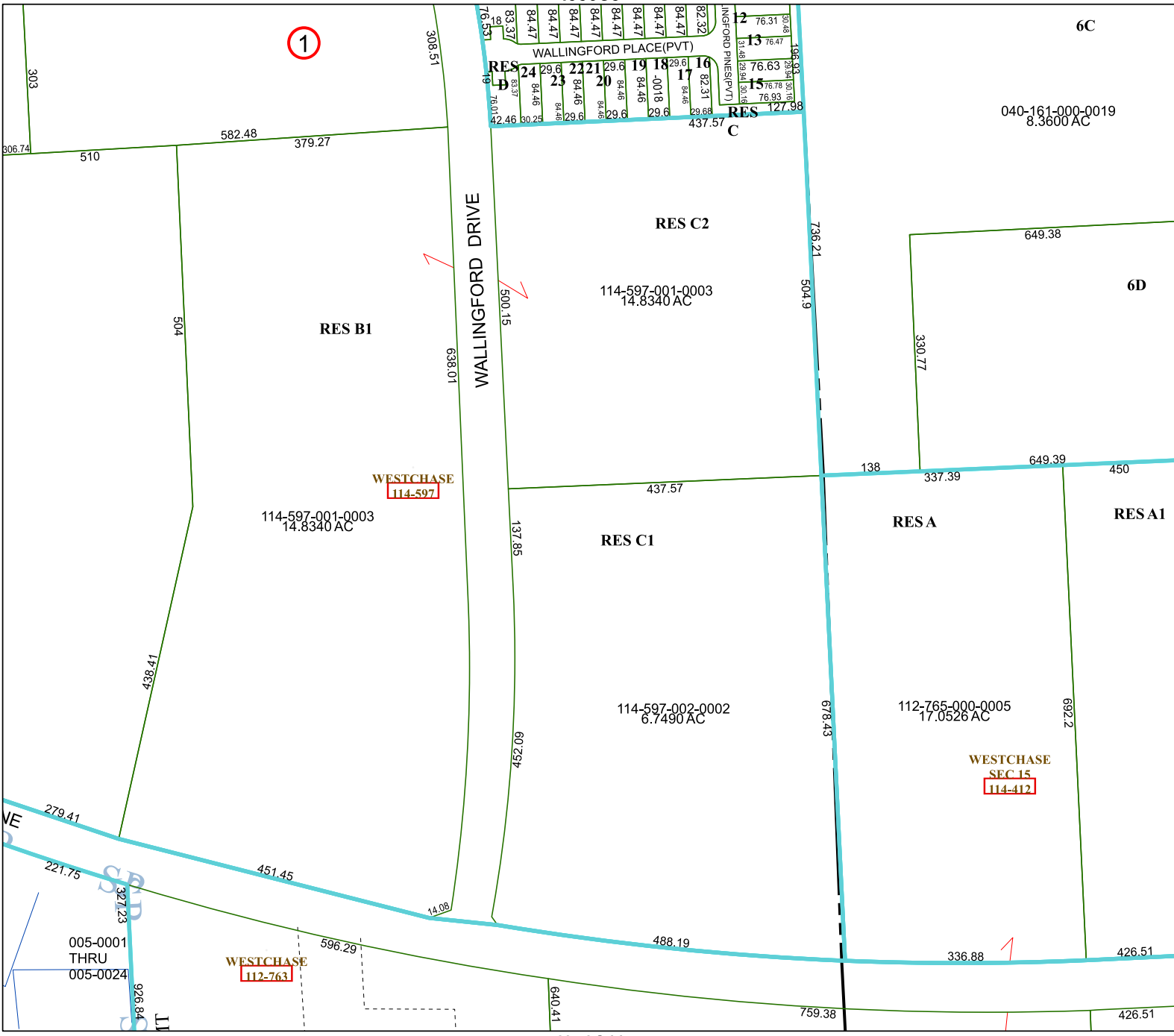


4956C3



# Harris Central Appraisal District



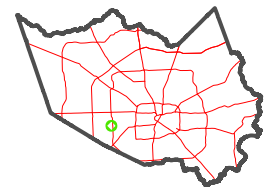
0 45 90 180 Feet

PUBLICATION DATE: 1/5/2023

Geospatial or map data maintained by the Harris Central Appraisal District is for informational purposes and may not have been prepared for or be suitable for legal, engineering, or surveying purposes. It does not represent an on-the-ground survey and only represents the approximate location of property boundaries.



### MAP LOCATION



## FACET 4956C7

1	2	3	4	1
5	6	7	8	5
9	10	11	12	9

4956C11

4956C6

4956C8

1

040-161-000-0019  
8.3600 AC

114-597-001-0003  
14.8340 AC

RES C1

114-597-002-0002  
6.7490 AC

RESA

112-765-000-0005  
17.0526 AC

RESA1

WESTCHASE  
SEC 15  
114-412

005-0001  
THRU  
005-0024

WESTCHASE  
112-763

1