

4956D5

028-095-000-0324
18.5000 AC

PARKSDALE
028-095

110-862-000-0014
1.6850 AC

Harris Central Appraisal District

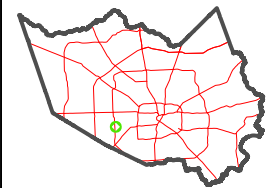


0 45 90 180 Feet

PUBLICATION DATE:
1/5/2023

Geospatial or map data maintained by the Harris Central Appraisal District is for informational purposes and may not have been prepared for or be suitable for legal, engineering, or surveying purposes. It does not represent an on-the-ground survey and only represents the approximate location of property boundaries.

MAP LOCATION



FACET 4956D9

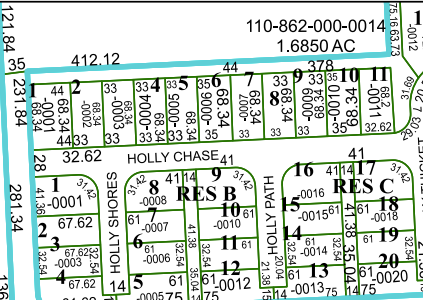
7	8	5	6	7
11	12	9	10	11
3	4	1	2	3

15B

16

SEAGLER ROAD

WESTEIGHT STREET DEDICATION
123-247



RES S4
RES S4-A

WESTCHASE R/P
110-862

110-862-000-0013
4.5206 AC

4956C12

RES T4

RES T1

RES T1-A

RES T2

111-377-000-0007
2.8977 AC

111-377-000-0002
2.4880 AC

111-377-000-0006
1.4500 AC

10200
111-377-000-0003
3.7000 AC

WESTCHASE
2ND R/P
111-377

RICHMOND AVENUE

RES A

WESTCHASE
CORPORATE CENTER
119-774

WESTCHASE R/P
2 AND PAR R/P
106-348

20

23

1

RES U1-B

RES U2

21

4955B1

10255
111-379-001-0015
3.7605 AC