

Harris Central Appraisal District

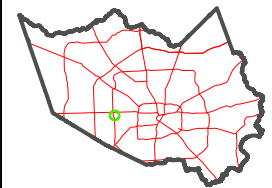


0 45 90 180 Feet

PUBLICATION DATE:
1/10/2025

Geospatial or map data maintained by the Harris Central Appraisal District is for informational purposes and may not have been prepared for or be suitable for legal, engineering, or surveying purposes. It does not represent an on-the-ground survey and only represents the approximate location of property boundaries.

MAP LOCATION



FACET 4957A4

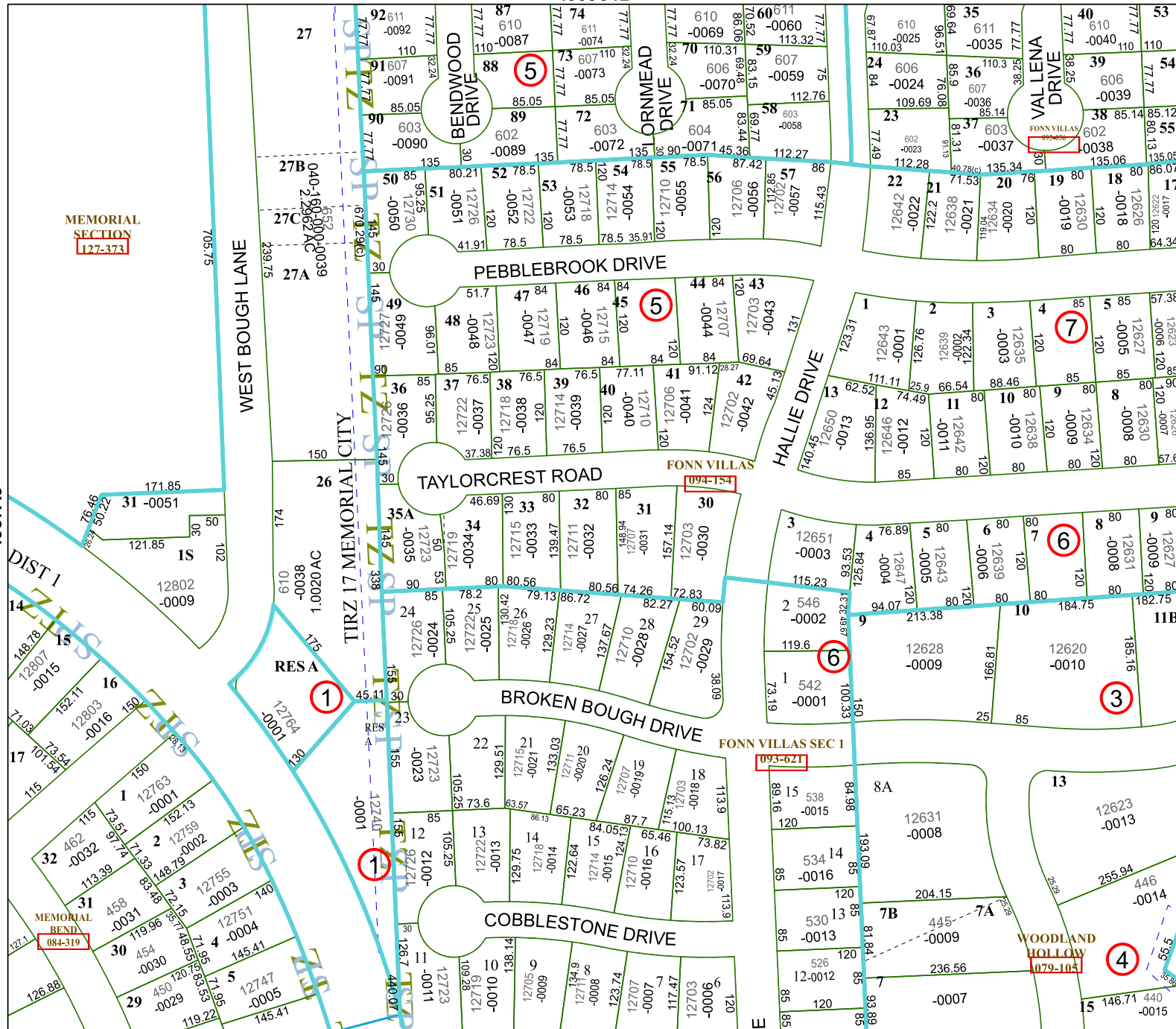
10	11	12	9	10
2	3	4	1	2
6	7	8	5	6

4958C12

MEMORIAL SECTION 127-373

4957A8

4957A3



WOODLAND HOLLOW 1079-105