

# Harris Central Appraisal District

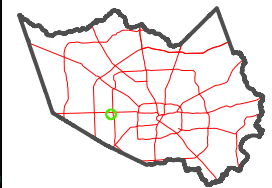


0 45 90 180 Feet

PUBLICATION DATE: 3/11/2024

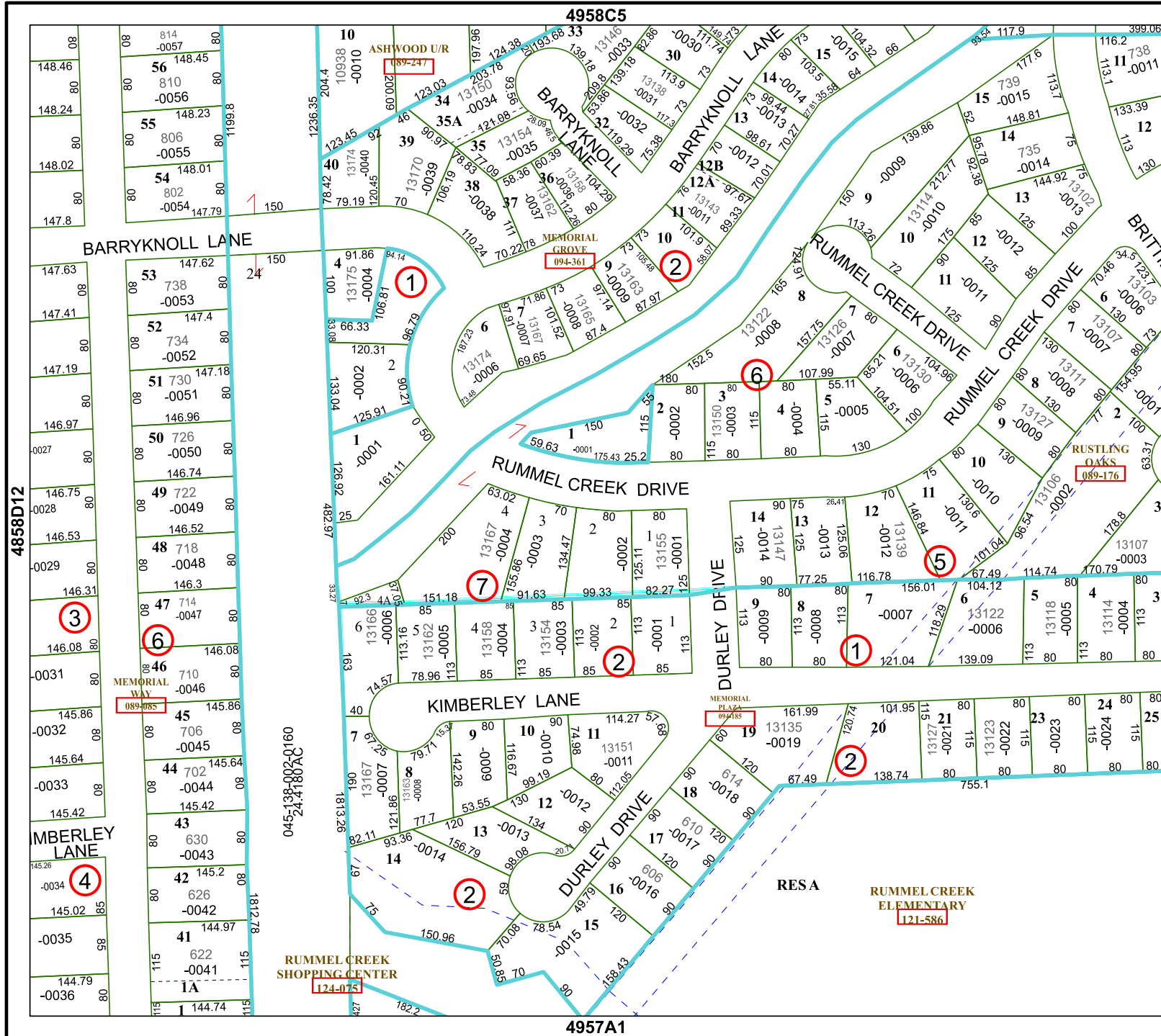
Geospatial or map data maintained by the Harris Central Appraisal District is for informational purposes and may not have been prepared for or be suitable for legal, engineering, or surveying purposes. It does not represent an on-the-ground survey and only represents the approximate location of property boundaries.

MAP LOCATION



## FACET 4958C9

7	8	5	6	7
11	12	9	10	11
3	4	1	2	3



4858D12

4958C5

4958C10

4957A1

045-138-002-0160  
24.4180AC

RESA  
RUMMEL CREEK  
ELEMENTARY  
121-586

RUMMEL CREEK  
SHOPPING CENTER  
124-0751

MEMORIAL  
WAY  
089-085

MEMORIAL  
GROVE  
094-361

RUSTLING  
OAKS  
089-176

ASHWOOD U/R  
089-247