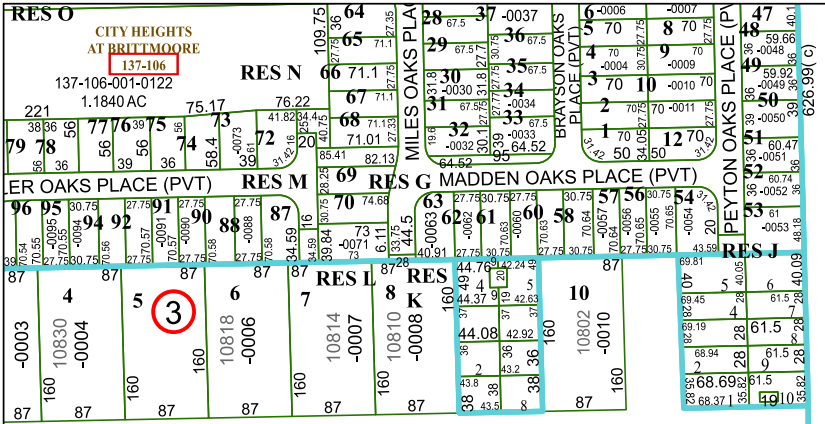


4959C6



RESA1

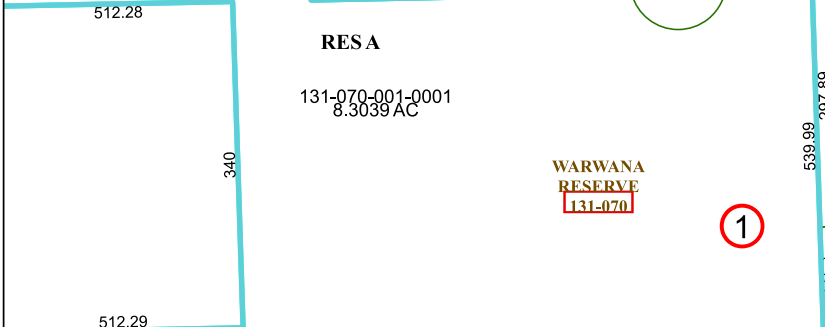
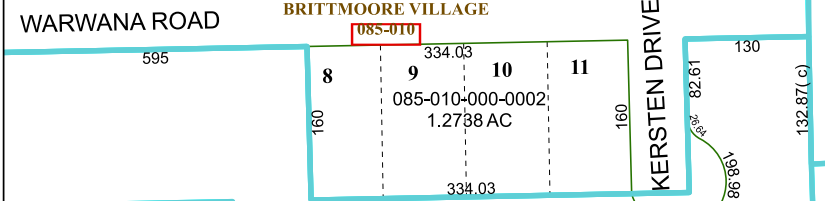
WEST BELT BUSINESS
PARK R/P No 2
119-222

119-222-001-0003
7.7543 AC

RESA

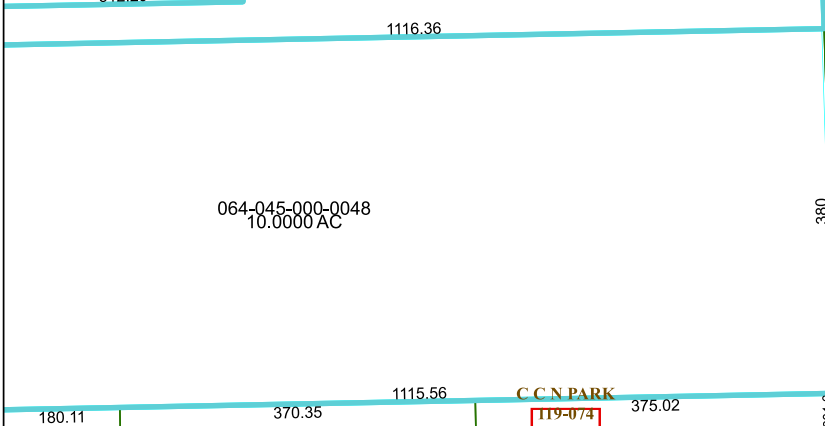
119-222-001-0001
2.2277 AC

1



WARWANA
RESERVE
131-070

1



C.C.N PARK
119-074

4958A2

4959C9

3S-2

045-138-000-0080
3.5808 AC

3Y
045-138-000-0058
1.1917 AC

3S

045-138-000-0038
8.1392 AC

3S-1

Harris Central Appraisal District

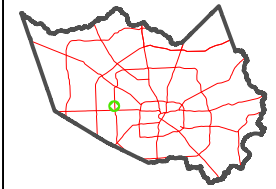


0 45 90 180 Feet

PUBLICATION DATE:
12/30/2023

Geospatial or map data maintained by the Harris Central Appraisal District is for informational purposes and may not have been prepared for or be suitable for legal, engineering, or surveying purposes. It does not represent an on-the-ground survey and only represents the approximate location of property boundaries.

MAP LOCATION



FACET 4959C10

8	5	6	7	8
12	9	10	11	12
4	1	2	3	4



4959C11