

4961C12

CITY OF HOUSTON

Harris Central Appraisal District

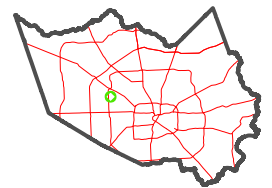


0 45 90 180 Feet

PUBLICATION DATE: 1/5/2023

Geospatial or map data maintained by the Harris Central Appraisal District is for informational purposes and may not have been prepared for or be suitable for legal, engineering, or surveying purposes. It does not represent an on-the-ground survey and only represents the approximate location of property boundaries.

MAP LOCATION



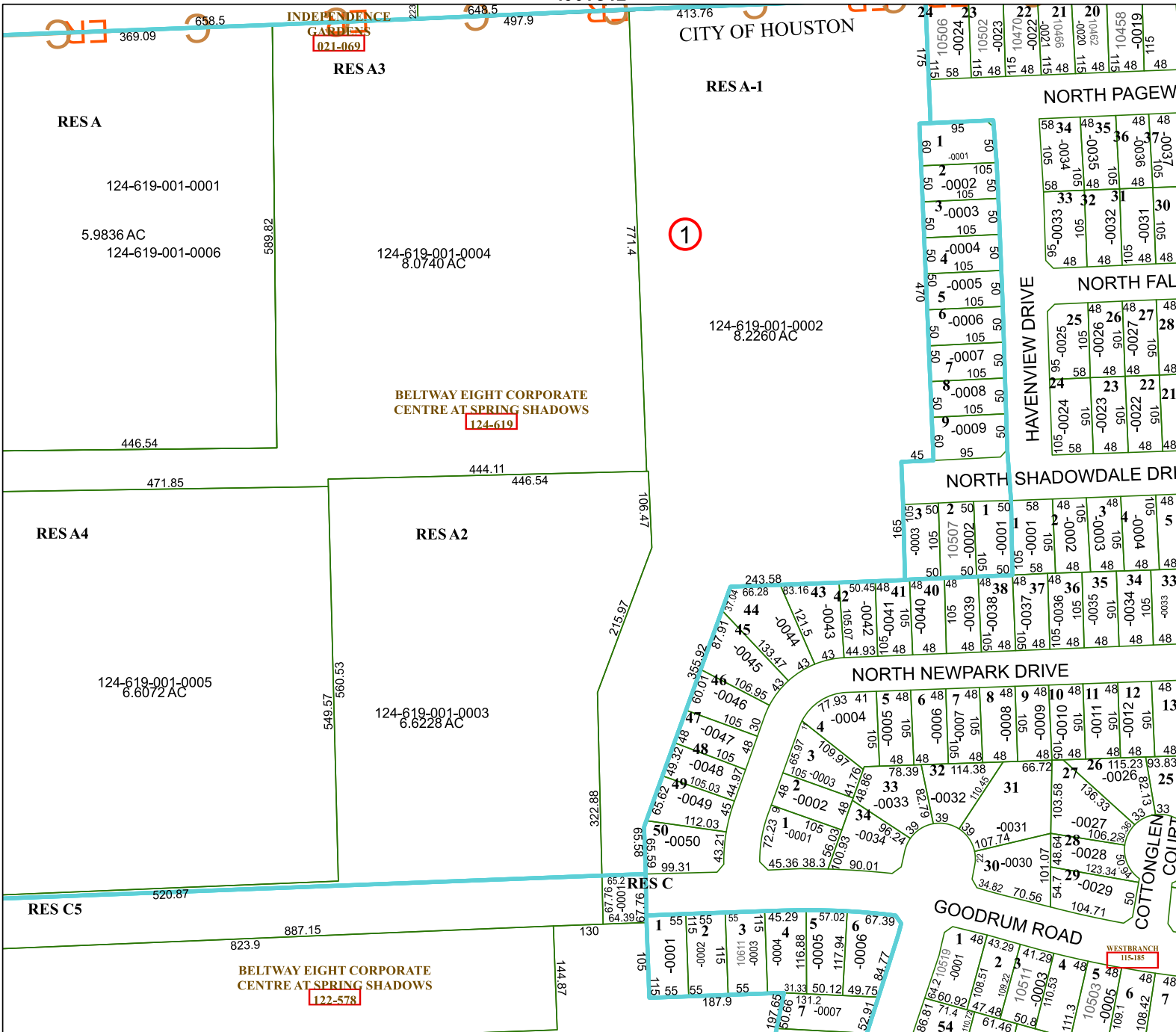
FACET 4960A4

10	11	12	9	10
2	3	4	1	2
6	7	8	5	6

4960A3

4960B1

4960A8



1

WESTBRANCH 115-185