

# Harris Central Appraisal District

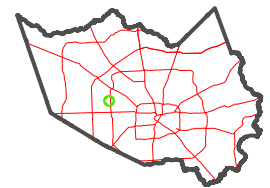


0 45 90 180 Feet

PUBLICATION DATE: 1/5/2023

Geospatial or map data maintained by the Harris Central Appraisal District is for informational purposes and may not have been prepared for or be suitable for legal, engineering, or surveying purposes. It does not represent an on-the-ground survey and only represents the approximate location of property boundaries.

## MAP LOCATION



# FACET 4960C5

3	4	1	2	3
7	8	5	6	7
11	12	9	10	11

4960C1

BRAYMOORE DRIVE

RES A

118-520-001-0001  
14.6886 AC

CLAYMOORE COMMERCIAL BUSINESS PARK  
**118-520**

1

4960C9

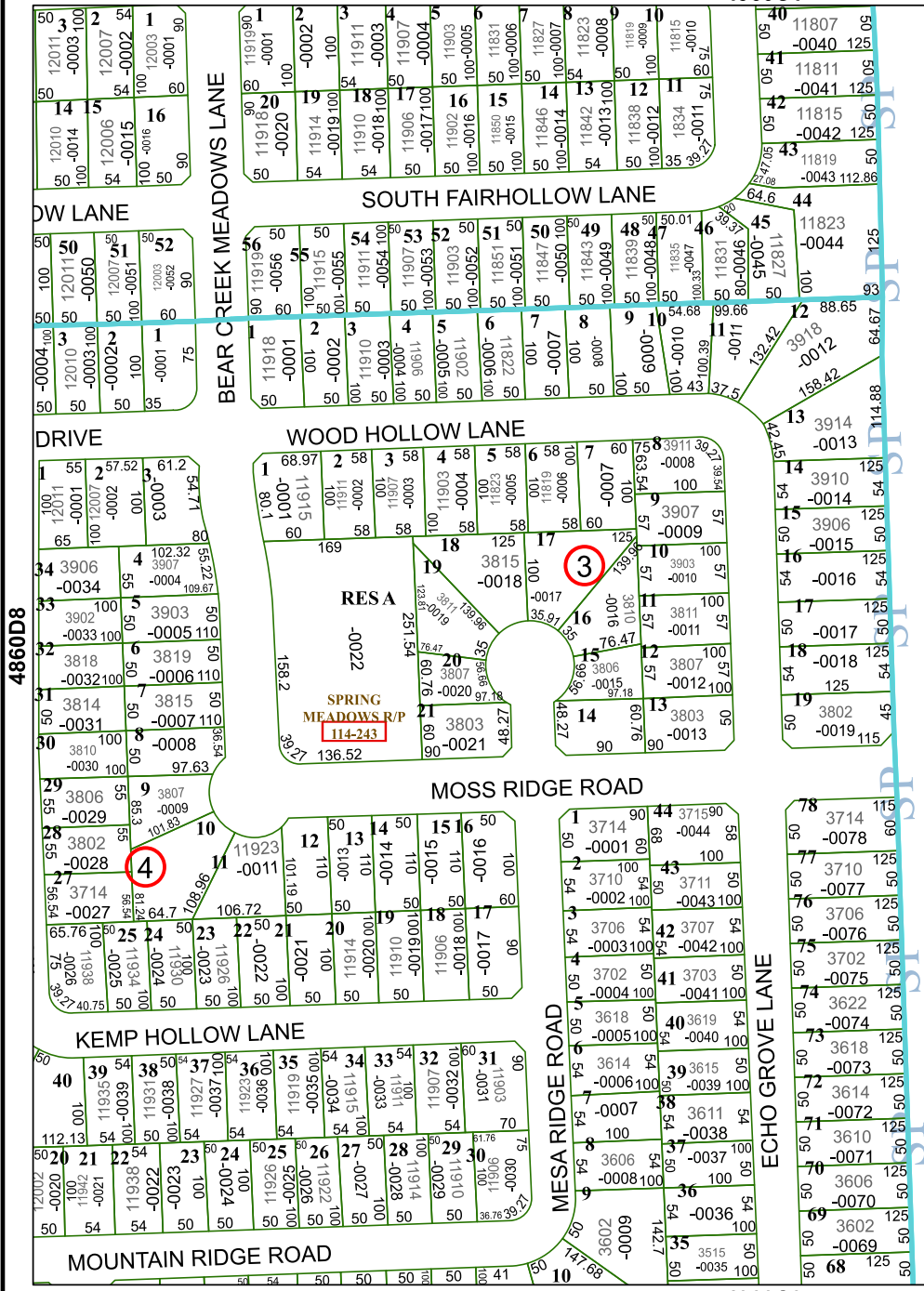
RES C2

CLAYMOORE BUSINESS PARK  
**115-224**

115-224-002-0003  
10.4226 AC

MOSS RIDGE

4960C6



4860D8

4960C5

