

Harris Central Appraisal District



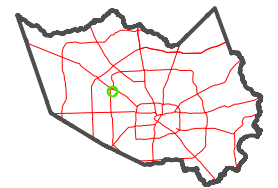
0 45 90 180 Feet

PUBLICATION DATE:
1/5/2023

Geospatial or map data maintained by the Harris Central Appraisal District is for informational purposes and may not have been prepared for or be suitable for legal, engineering, or surveying purposes. It does not represent an on-the-ground survey and only represents the approximate location of property boundaries.



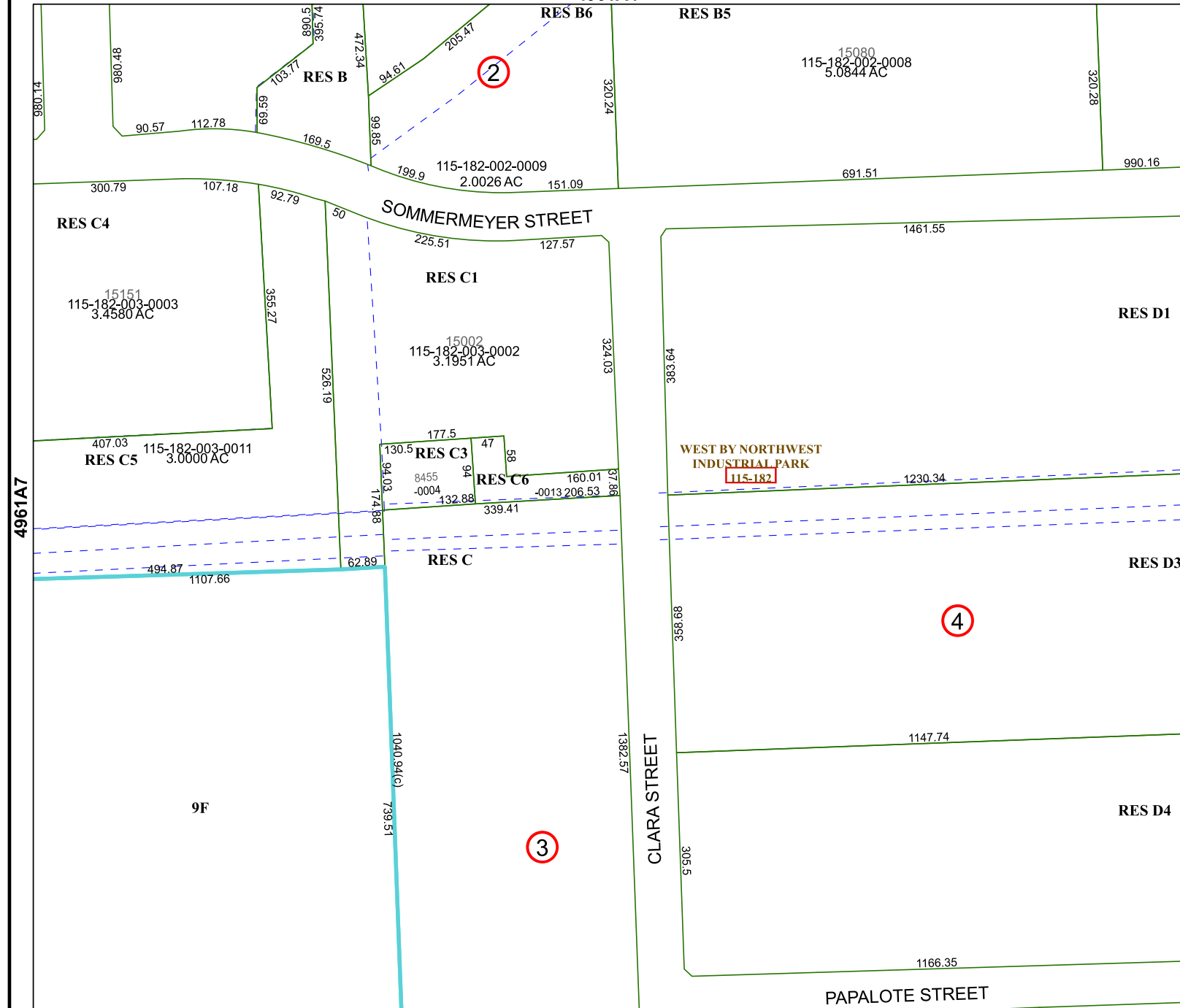
MAP LOCATION



FACET 4961A8

2	3	4	1	2
6	7	8	5	6
10	11	12	9	10

4961A4



4961A12

4961A7

4961B5

2

4

3