

4961B3

# Harris Central Appraisal District

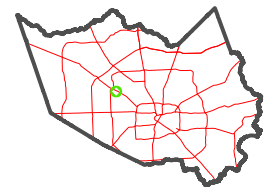


0 45 90 180 Feet

PUBLICATION DATE: 12/30/2023

Geospatial or map data maintained by the Harris Central Appraisal District is for informational purposes and may not have been prepared for or be suitable for legal, engineering, or surveying purposes. It does not represent an on-the-ground survey and only represents the approximate location of property boundaries.

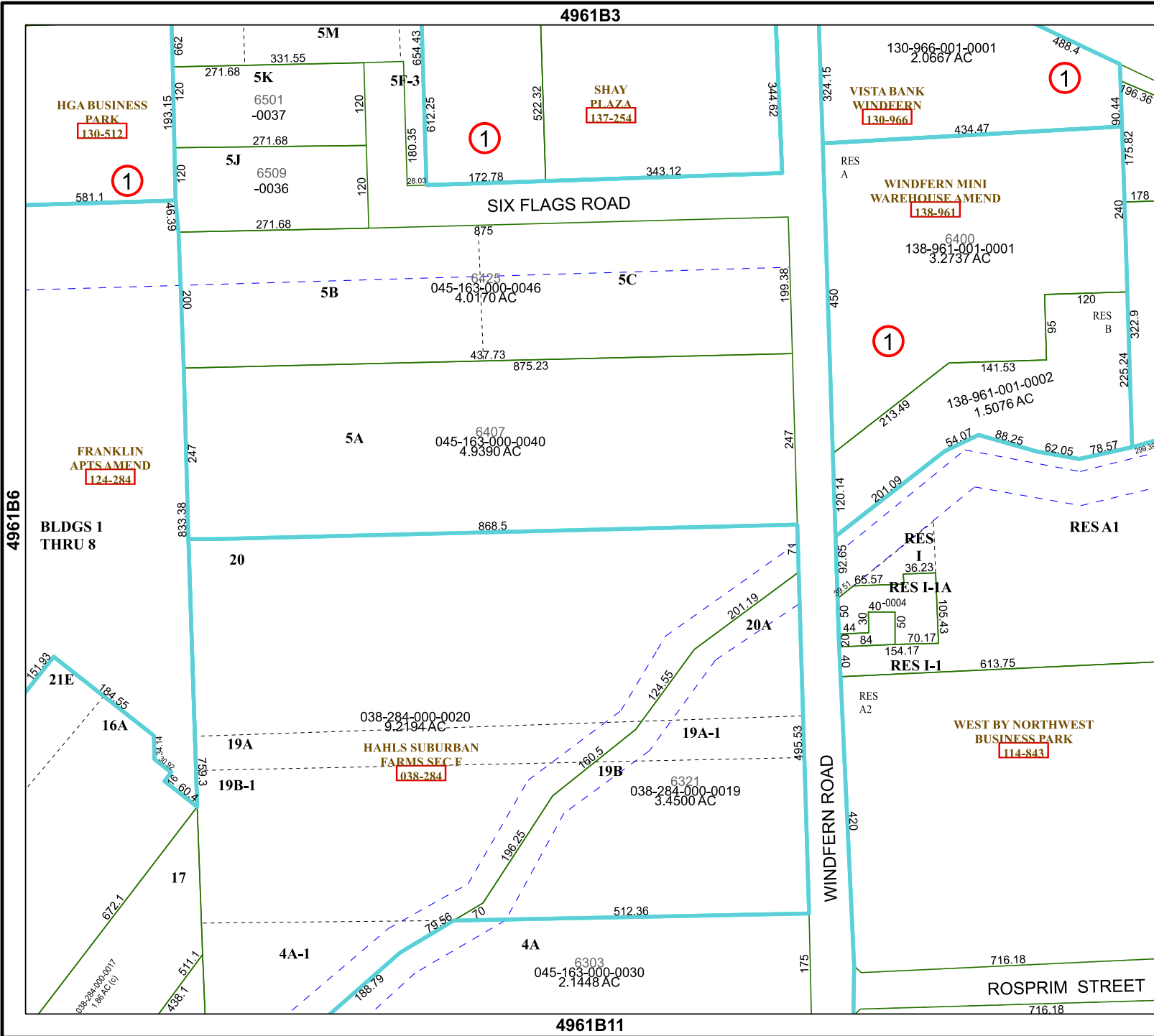
MAP LOCATION



## FACET 4961B7

1	2	3	4	1
5	6	7	8	5
9	10	11	12	9

4961B11



4961B6

4961B8

WINDFERN ROAD

ROSPRIM STREET

HGA BUSINESS PARK  
130-512

SHAY PLAZA  
137-254

VISTABANK WINDEERN  
130-966

WINDFERN MINI WAREHOUSE AMEND  
138-961

FRANKLIN APTS AMEND  
124-284

BLDGS 1 THRU 8

HAHLS SUBURBAN FARMS SEC E  
038-284

WEST BY NORTHWEST BUSINESS PARK  
114-843

FACET 4961B7