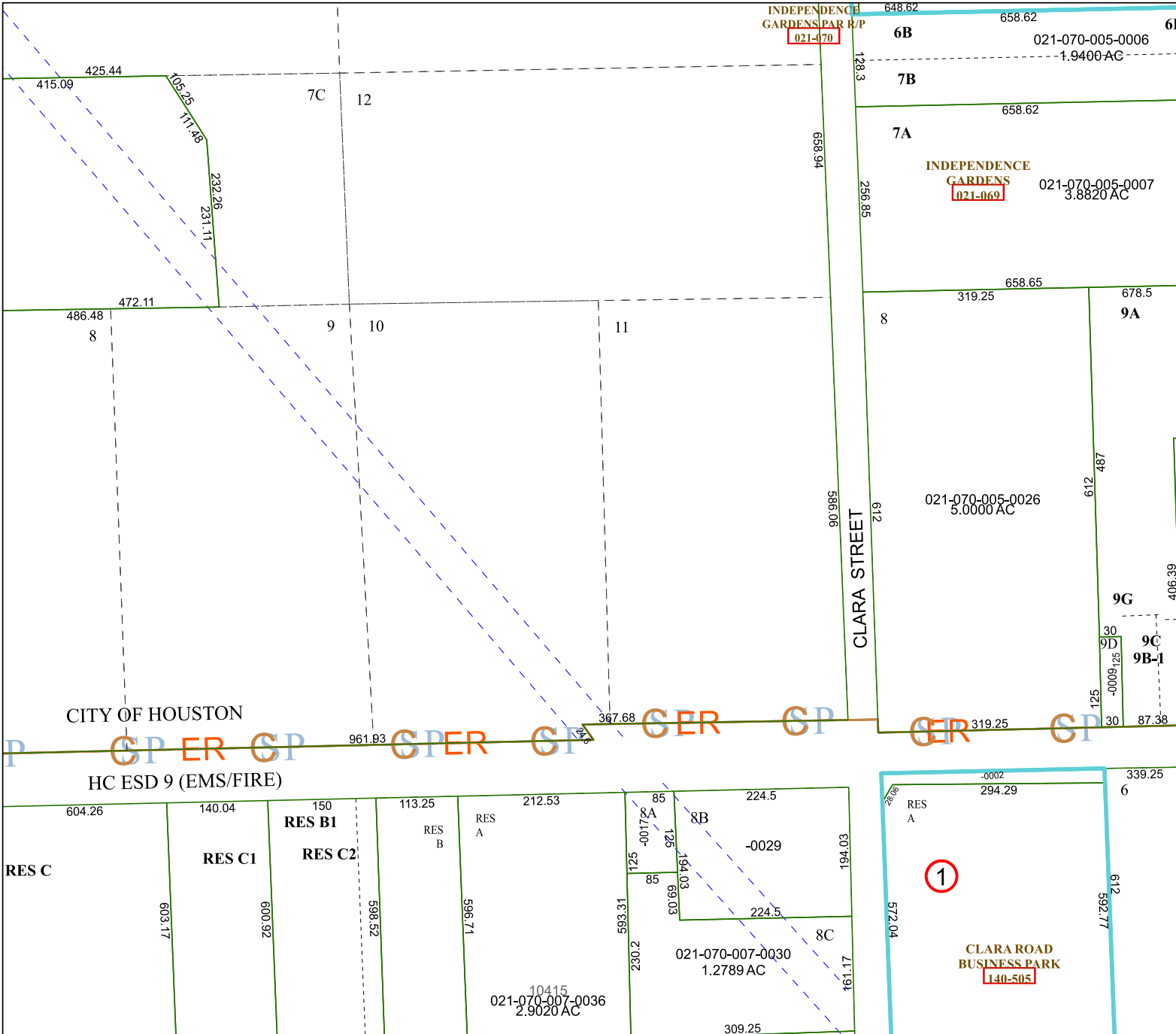


4961C4

INDEPENDENCE  
GARDENS PAR R/P  
**021-070**



# Harris Central Appraisal District



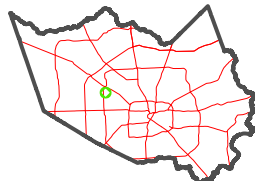
0 45 90 180  
Feet

PUBLICATION DATE:  
2/28/2024

Geospatial or map data maintained by the Harris Central Appraisal District is for informational purposes and may not have been prepared for or be suitable for legal, engineering, or surveying purposes. It does not represent an on-the-ground survey and only represents the approximate location of property boundaries.



MAP LOCATION



## FACET 4961C8

|    |    |    |   |    |
|----|----|----|---|----|
| 2  | 3  | 4  | 5 | 6  |
| 6  | 7  | 8  | 9 | 10 |
| 10 | 11 | 12 | 1 | 2  |

4961C12

4961C7

4961D5

CITY OF HOUSTON

HC ESD 9 (EMS/FIRE)

RES C

RES C1

RES B1

RES C2

RES B

RES A

8B

8A

8C

1

CLARA ROAD  
BUSINESS PARK  
**140-505**

10415  
021-070-007-0036  
2.9020 AC

021-070-007-0030  
1.2789 AC

021-070-005-0026  
5.0000 AC

INDEPENDENCE  
GARDENS  
**021-069**  
021-070-005-0007  
3.8820 AC

6B  
021-070-005-0006  
1.9400 AC