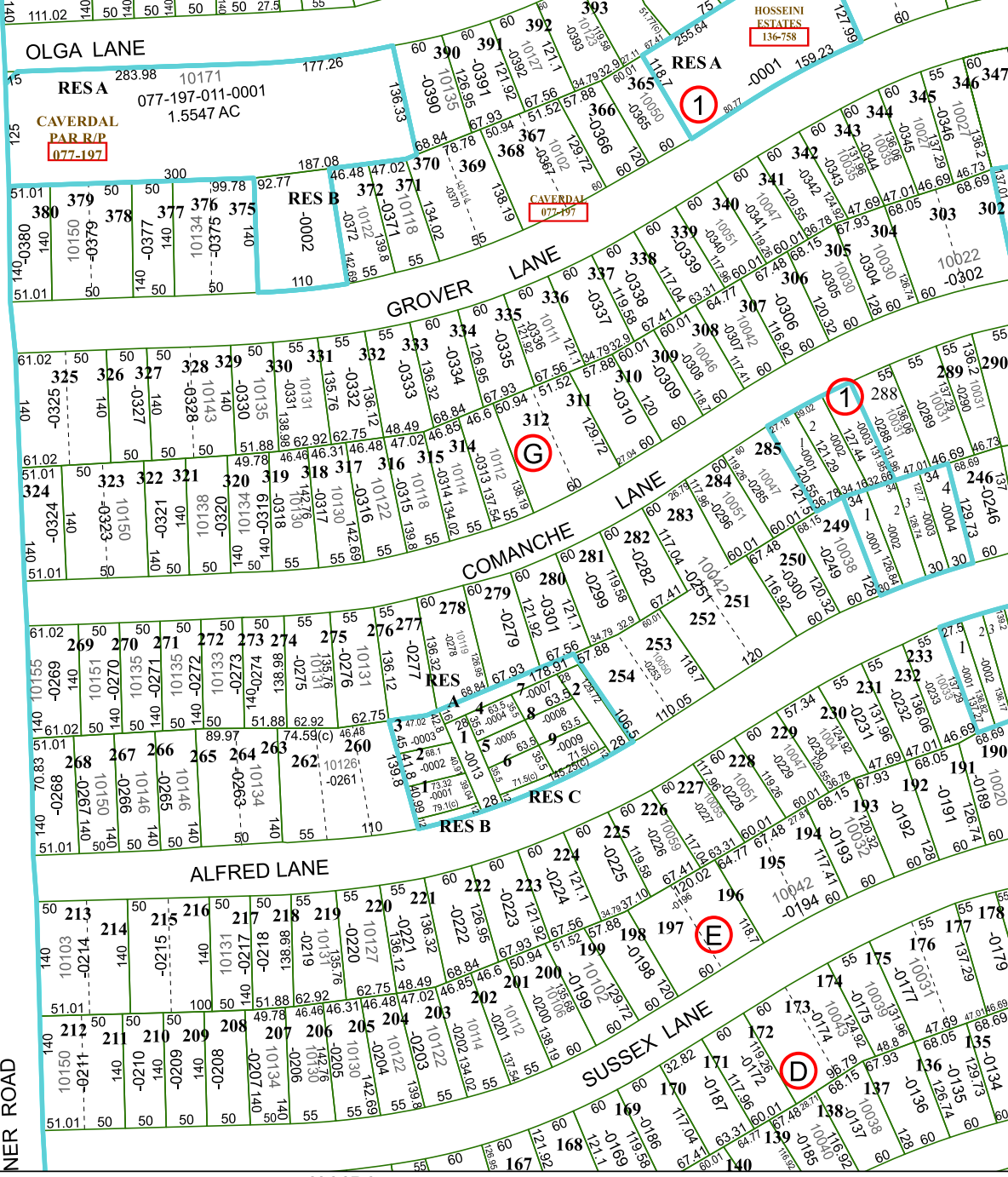


4961B10



4961D6

4961D1

GESSNER PARK PLAZA  
118-593

RESA

2629.77

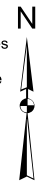
# Harris Central Appraisal District



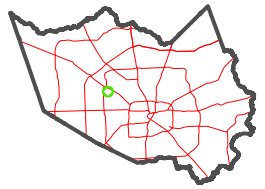
0 45 90 180 Feet

PUBLICATION DATE:  
12/30/2023

Geospatial or map data maintained by the Harris Central Appraisal District is for informational purposes and may not have been prepared for or be suitable for legal, engineering, or surveying purposes. It does not represent an on-the-ground survey and only represents the approximate location of property boundaries.



MAP LOCATION



## FACET 4961D2

12	9	10	11	12
4	1	2	3	4
8	5	6	7	8