

# Harris Central Appraisal District



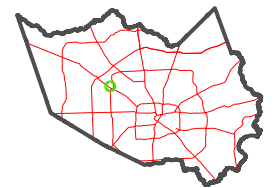
0 45 90 180 Feet

PUBLICATION DATE:  
1/5/2023

Geospatial or map data maintained by the Harris Central Appraisal District is for informational purposes and may not have been prepared for or be suitable for legal, engineering, or surveying purposes. It does not represent an on-the-ground survey and only represents the approximate location of property boundaries.



MAP LOCATION

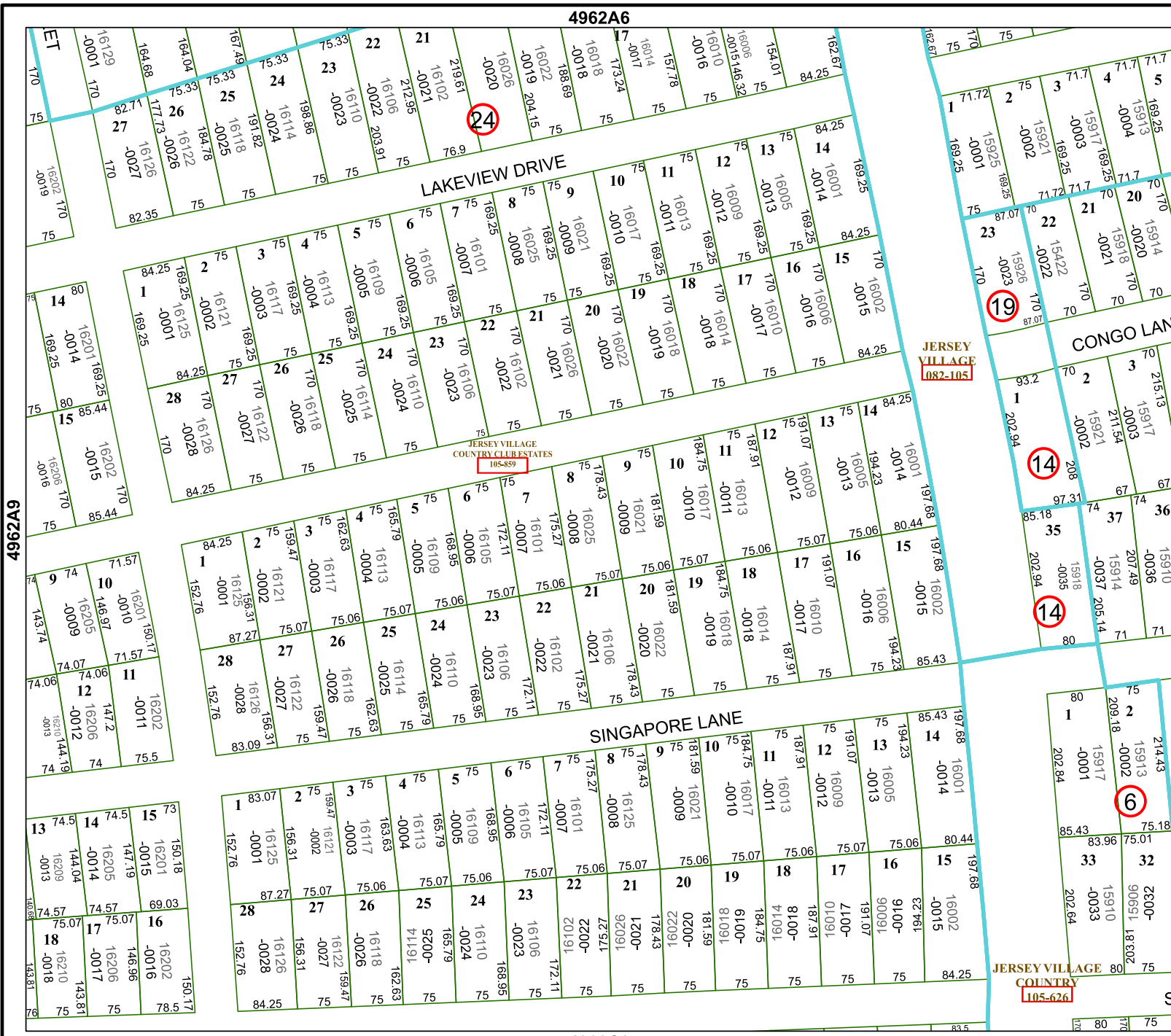


## FACET 4962A10

8	5	6	7	8
12	9	10	11	12
4	1	2	3	4

4962A6

4962C2



4962A6

JERSEY VILLAGE  
COUNTRY  
105-105

JERSEY VILLAGE  
COUNTRY CLUB ESTATES  
105-859

JERSEY VILLAGE  
COUNTRY  
105-626