

# Harris Central Appraisal District

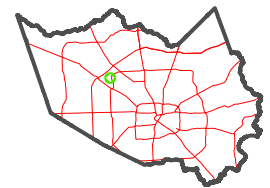


0 45 90 180 Feet

PUBLICATION DATE:  
1/5/2023

Geospatial or map data maintained by the Harris Central Appraisal District is for informational purposes and may not have been prepared for or be suitable for legal, engineering, or surveying purposes. It does not represent an on-the-ground survey and only represents the approximate location of property boundaries.

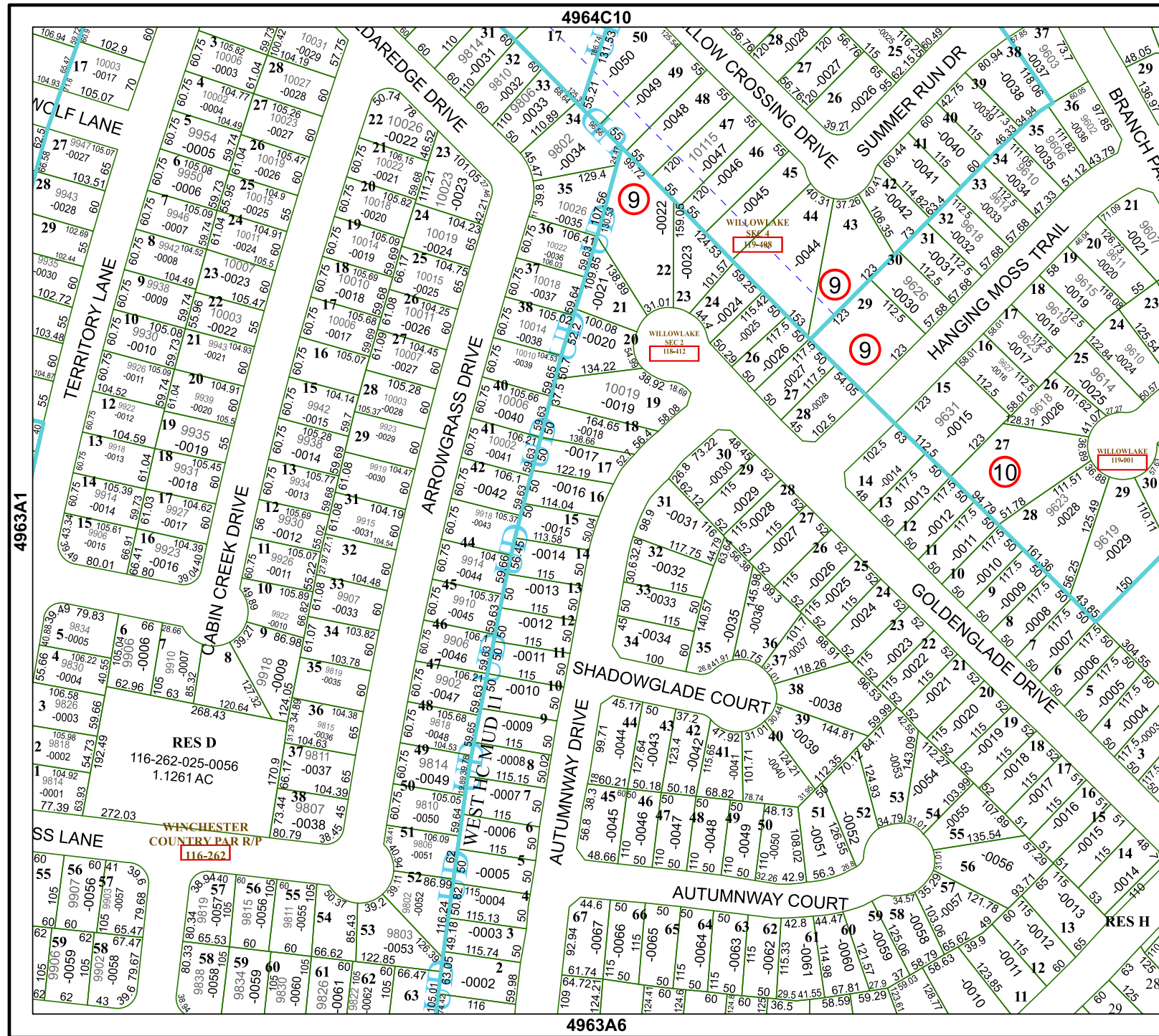
MAP LOCATION



## FACET

### 4963A2

12	9	10	11	12
4	1	2	3	4
8	5	6	7	8



4963A1

4964C10

4963A3

4963A6

RES D  
116-262-025-0056  
1.1261 AC

WINCHESTER  
COUNTRY PAR R/P  
116-262

RES H