

# Harris Central Appraisal District

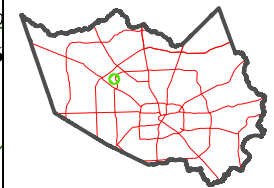


0 45 90 180 Feet

PUBLICATION DATE: 1/5/2023

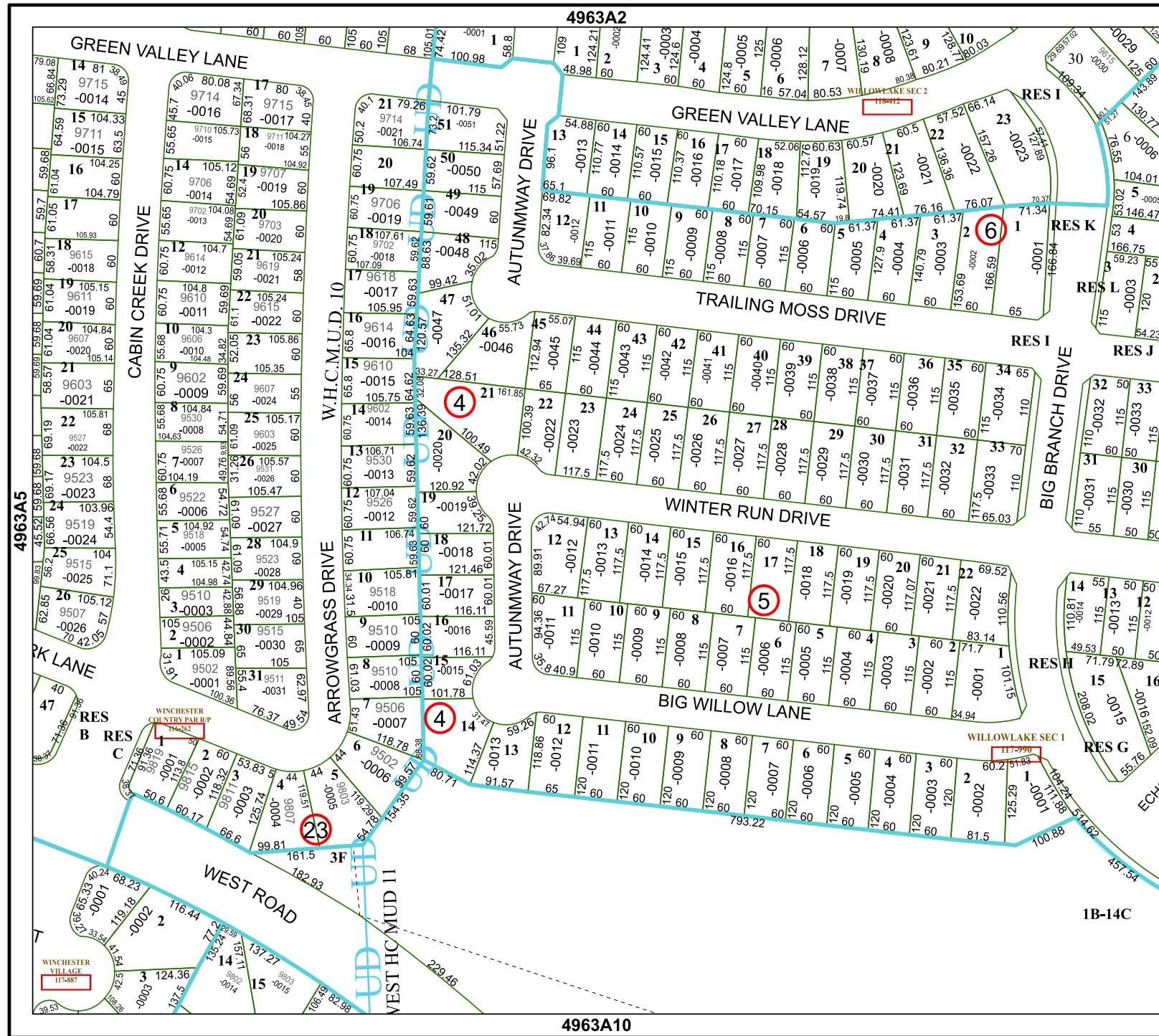
Geospatial or map data maintained by the Harris Central Appraisal District is for informational purposes and may not be suitable for legal, engineering, or surveying purposes. It does not represent an on-the-ground survey and only represents the approximate location of property boundaries.

MAP LOCATION



## FACET 4963A6

4	1	2	3	4
8	5	6	7	8
12	9	10	11	12



4963A2

4963A10

4963A7

4963A5

1B-14C

WINCHESTER COUNTRY PARK 117-887

WINCHESTER VILLAGE 117-887

WILLOWLAKE SEC 1 117-999

WILLOWLAKE SEC 2 118-112