

Harris Central Appraisal District

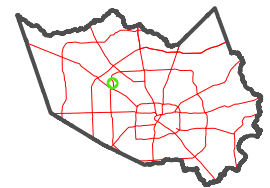


0 45 90 180 Feet

PUBLICATION DATE: 1/5/2023

Geospatial or map data maintained by the Harris Central Appraisal District is for informational purposes and may not have been prepared for or be suitable for legal, engineering, or surveying purposes. It does not represent an on-the-ground survey and only represents the approximate location of property boundaries.

MAP LOCATION



FACET 4963C12

| | | | | |
|----|----|----|---|----|
| 6 | 7 | 8 | 5 | 6 |
| 10 | 11 | 12 | 9 | 10 |
| 2 | 3 | 4 | 1 | 2 |

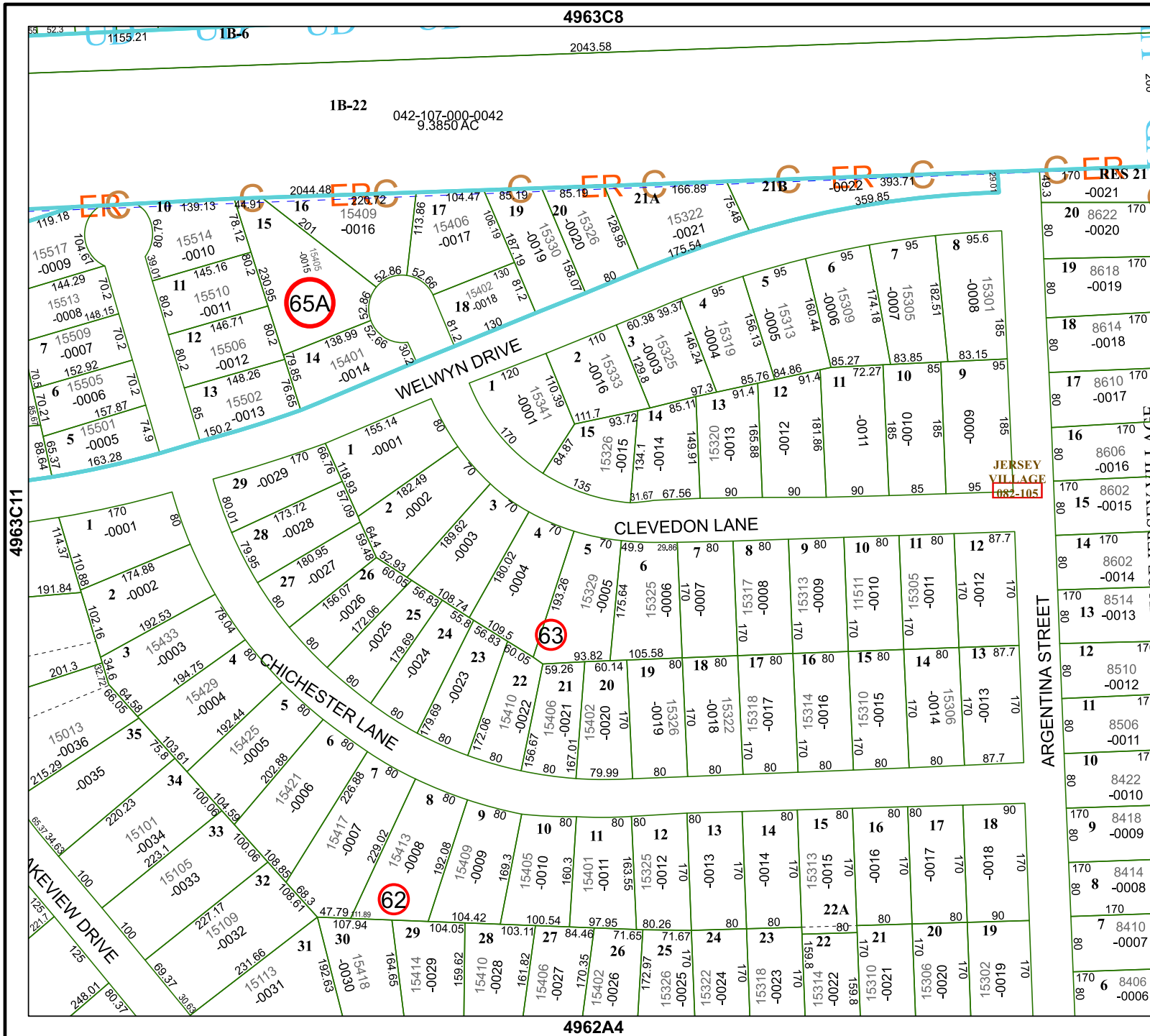
4963C8

2043.58

1B-22

042-107-000-0042
9.3850 AC

4962A4



ARGENTINIA STREET

CITY OF JERSEY VILLAGE 4963D9

JERSEY VILLAGE 862-105

