

Harris Central Appraisal District

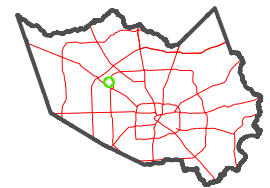


0 45 90 180 Feet

PUBLICATION DATE:
1/5/2023

Geospatial or map data maintained by the Harris Central Appraisal District is for informational purposes and may not have been prepared for or be suitable for legal, engineering, or surveying purposes. It does not represent an on-the-ground survey and only represents the approximate location of property boundaries.

MAP LOCATION

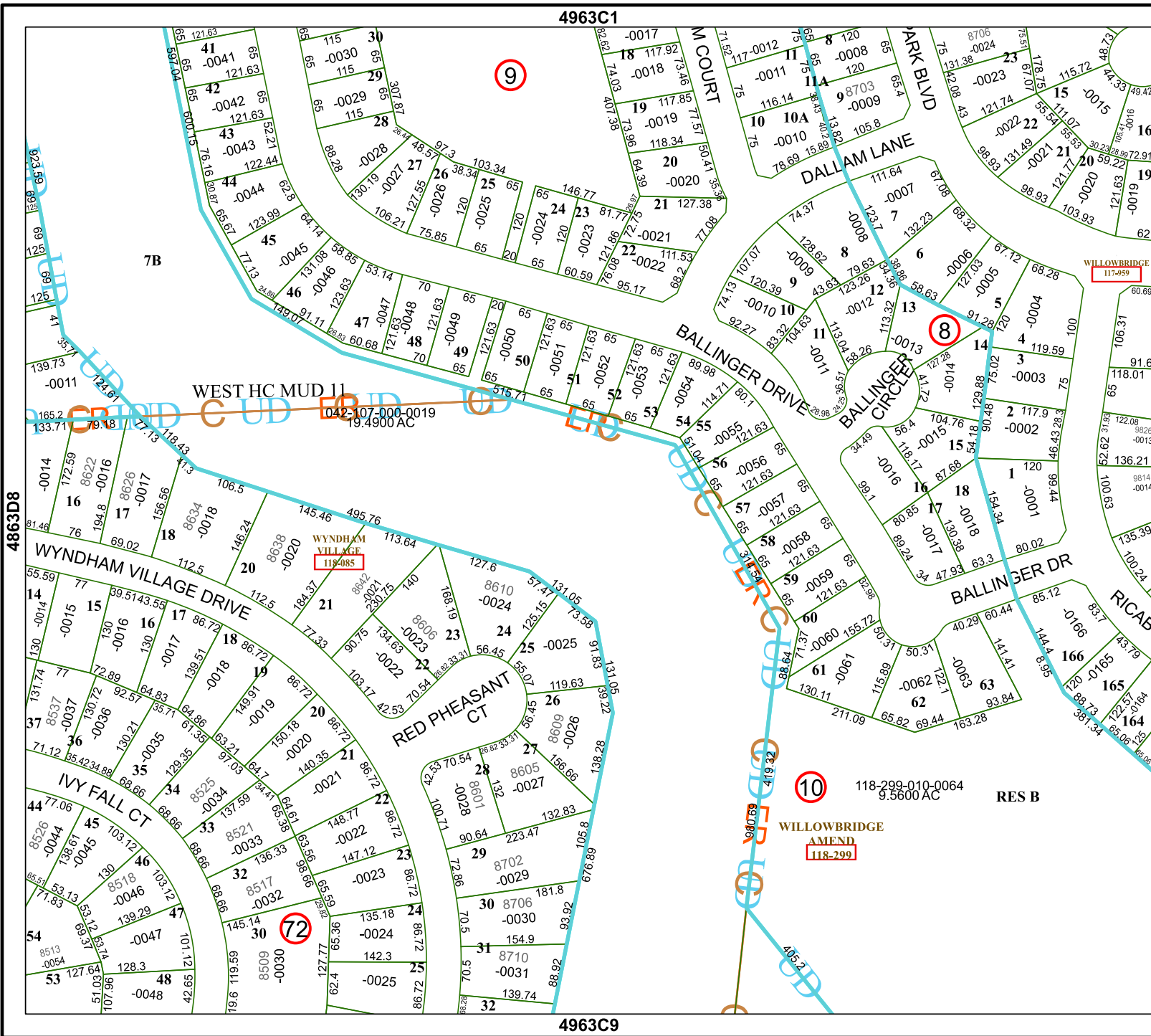


FACET 4963C5

3	4	1	2	3
7	8	5	6	7
11	12	9	10	11

4963C1

4963C9



9

8

72

10

118-299-010-0064
9.5600 AC

RES B

WILLOWBRIDGE
AMEND
118-299

WEST HC MUD 11
042-107-000-0019
19.4900 AC

WYNDHAM VILLAGE
118-085

4863D8

4963C6

