

Harris Central Appraisal District

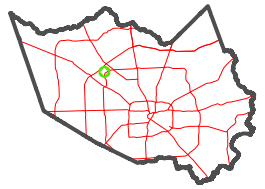


0 45 90 180 Feet

PUBLICATION DATE: 2/13/2023

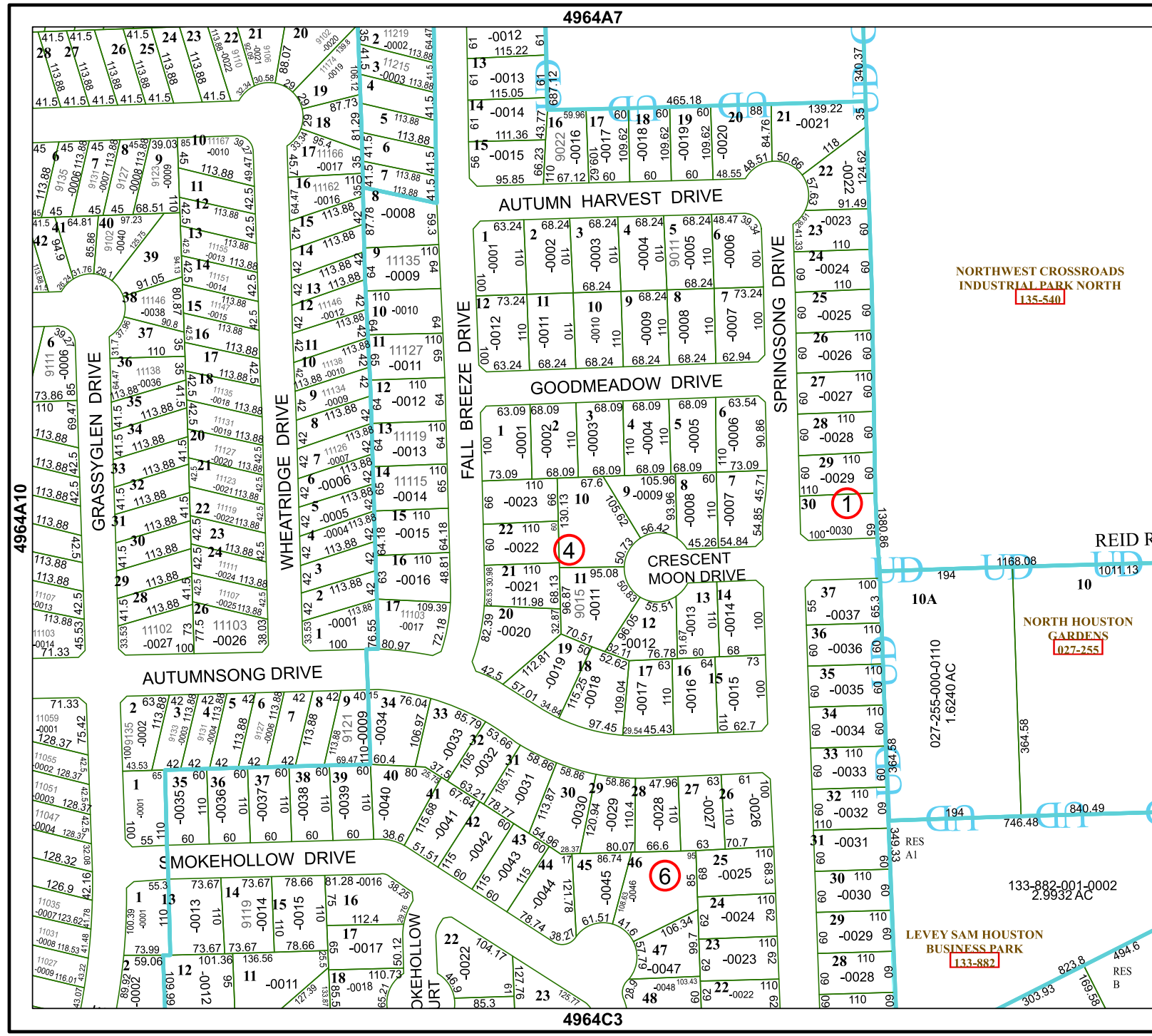
Geospatial or map data maintained by the Harris Central Appraisal District is for informational purposes and may not have been prepared for or be suitable for legal, engineering, or surveying purposes. It does not represent an on-the-ground survey and only represents the approximate location of property boundaries.

MAP LOCATION



FACET 4964A11

5	6	7	8	5
9	10	11	12	9
1	2	3	4	1



NORTHWEST CROSSROADS INDUSTRIAL PARK NORTH
135-540

NORTH HOUSTON GARDENS
027-255

LEVEY SAM HOUSTON BUSINESS PARK
133-882

133-882-001-0002
2.9932 AC

027-255-000-0110
1.6240 AC

1168.08
1011.13

746.48
840.49

303.93
169.58

823.8
494.6

194

10A

10

RES A1

RES B

100-0030

65

98

100

65.3

60

60

60

60

60

60

60

60

60

60

60

60

60

60

60

60