

4967C11

CYPRESS COMMONS APARTMENTS
119-528

PRESTONWOOD PARK
120-798

4966A7

Harris Central Appraisal District

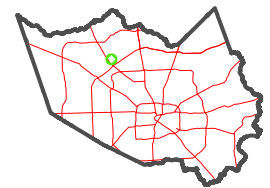


0 45 90 180 Feet

PUBLICATION DATE:
1/5/2023

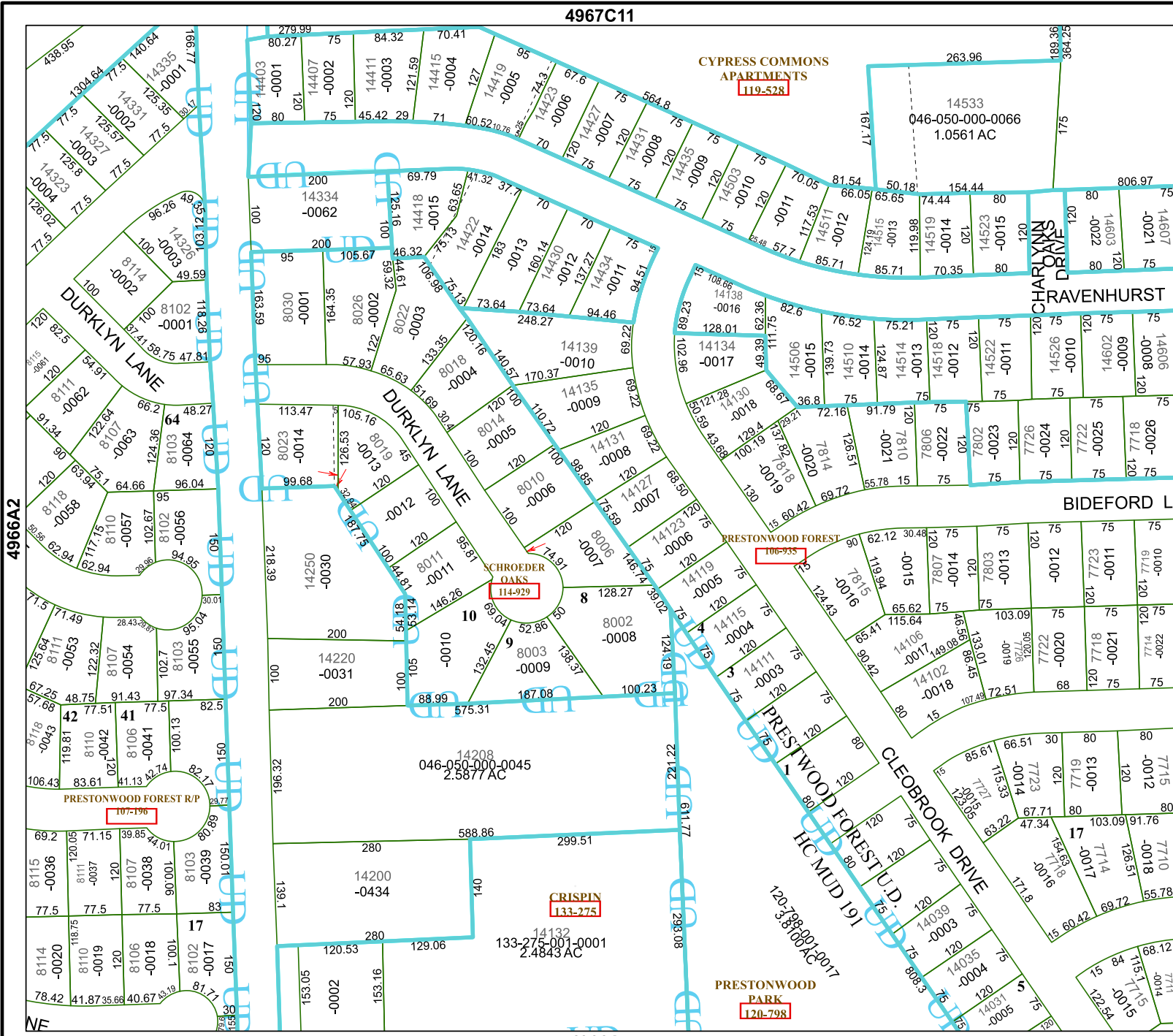
Geospatial or map data maintained by the Harris Central Appraisal District is for informational purposes and may not have been prepared for or be suitable for legal, engineering, or surveying purposes. It does not represent an on-the-ground survey and only represents the approximate location of property boundaries.

MAP LOCATION



FACET 4966A3

9	10	11	12	9
1	2	3	4	1
5	6	7	8	5



4966A2

4966A4

NE

